



# The University of North Carolina

GENERAL ADMINISTRATION

POST OFFICE BOX 2688, CHAPEL HILL, NC 27515-2688

ALAN R. MABE, *Senior Vice President for Academic Affairs*

Telephone: (919) 962-4614 Fax: (919) 962-0120 E-mail: mabe@northcarolina.edu

*Constituent Universities*  
Appalachian State  
University

East Carolina  
University

Elizabeth City  
State University

Fayetteville State  
University

North Carolina  
Agricultural and  
Technical State  
University

North Carolina  
Central University

North Carolina  
State University  
at Raleigh

University of  
North Carolina  
at Asheville

University of  
North Carolina  
at Chapel Hill

University of  
North Carolina  
at Charlotte

University of  
North Carolina  
at Greensboro

University of  
North Carolina  
at Pembroke

University of  
North Carolina  
at Wilmington

University of  
North Carolina  
School of the Arts

Western Carolina  
University

Winston-Salem  
State University

*Constituent High School*  
North Carolina  
School of Science  
and Mathematics

An Equal Opportunity/  
Affirmative Action  
Employer

## MEMORANDUM

TO: Members, Educational Planning Committee

FROM: Alan Mabe

DATE: December 16, 2010

SUBJECT: UNC Profile: Key Trend and Accountability Data

We have been trying to put together our data to tell a story about UNC. For example, if we look only at say nationally defined six-year graduation rates we get one picture of the university but if we put that data in the context of what happens with students who may transfer and if we look at the actual number of semesters they are enrolled we get a very different picture.

For example, if we follow the data about ASU we can make the following points about the graduation rates for first-time, full-time freshmen:

- ASU's six-year graduation rate is 64.4%
- If ASU students are tracked through other UNC institutions its graduation rate is 70.7%
- If ASU students are tracked through all other universities its graduation rate is 74.1%
- ASU students have a student success percentage of 85.5% based on the Voluntary System of Accountability which records students who have a degree from any college or university or are enrolled in any college or university six years later
- For those first-time full-time students recorded as graduating in six years the average number of regular semester's they were actually enrolled was 8.6, which is only slightly over four-years of enrollment
- A different measure would be to ask of all undergraduate students enrolled at ASU in a given year how many graduate within six years. For ASU that number for those enrolled in 2003 is 81.9%

We thought this kind of document might serve as a resource to the Board and the campuses by having important data readily available.

# The University of North Carolina



## A Profile

Based on

Key Trend and Accountability Data

November 2010

## CONSTITUENT INSTITUTIONS OF THE UNIVERSITY OF NORTH CAROLINA

ASU	Appalachian State University
ECU	East Carolina University
ECSU	Elizabeth City State University
FSU	Fayetteville State University
NCA&T	North Carolina Agricultural & Technical State University
NCCU	North Carolina Central University
NCSU	North Carolina State University
UNCA	University of North Carolina at Asheville
UNC-CH	University of North Carolina at Chapel Hill
UNCC	University of North Carolina at Charlotte
UNCG	University of North Carolina at Greensboro
UNCP	University of North Carolina at Pembroke
UNCW	University of North Carolina at Wilmington
UNCSA	University of North Carolina School of the Arts
WCU	Western Carolina University
WSSU	Winston-Salem State University
NCSSM	North Carolina School of Science and Mathematics

## INTRODUCTION

The University of North Carolina and its constituent institutions collect an extensive amount of data about their activities, processes, achievements, and performance. This profile seeks to identify core areas and provide key trend and accountability data and to set the data in context and provide explanations to help the reader understand it.

The areas chosen for inclusion are enrollment (including distance and online), retention and graduation rates, degree production (including high-need areas), tuition, financial aid, faculty, utilization of facilities, endowments, and administrative ratios. All of these areas have received extensive attention both within and outside the University in recent years. This profile is meant to present understandable data that can contribute to the continuing discussion. Some of the data will help us understand areas where the University has had great success, and others where we need to improve our efforts. For example, with the support of the General Assembly, UNC has grown by over 60,000 students in this decade, a remarkable record of extending access to higher education. Another area is nursing, where UNC campuses responded to the Task Force on Nursing's call for at least a 25% increase in the production of nurses by increasing the production at all levels by almost 80% in six years. An example of an area needing more attention is providing access to more students while also providing them with appropriate paths to academic success. We are using our vast store of data to try to develop optimal ways to connect

admissions decisions and student and campus performance. UNC and the North Carolina Community College System are working closely together to develop strategies that will provide students the best option for their post-secondary education.

While other areas may be included in future iterations, the areas discussed here constitute core topics for internal and external attention and all relate to the core mission of the University.

We intend this profile to be an annual report available on the Internet for public consumption to communicate key facts, data, and achievements of the University of North Carolina. We plan to update it annually, with intermediate updates as new data become available.

Any work of this sort must strike a balance between too much data and not enough. Topical sections are meant to stand alone or at least be able to be used independently for analysis, planning, revision of practices, and assessment. For example, Section II, on retention and graduation, includes the five years of targets (soon to be extended) for all the campuses and their performance for the first year of targets. It provides other perspectives and measures, as well, for tracking students and their performance.

Feedback and comments are welcome as we attempt to mold the profile into a useful and informative annual publication.

## I. ENROLLMENT

### 1.1. ENROLLMENT TRENDS

In 2000 the State of North Carolina passed the largest bond issue in its history, with \$2.5 billion designated for the University of North Carolina and \$600 million for the community colleges. It was premised on the expectation that the University would grow by as many as 50,000 students over the decade. From 1999, which had an enrollment of 160,987 students, through 2009, UNC grew by 61,335 students, or 38%. Clearly, the bond program was needed to support this rapid growth, which outstripped the 2000 projections. While the 38% growth was for 1999 through 2009, most of the following analysis will focus on trends since 2000.

Freshman enrollment has grown by 28% since 2000, and overall undergraduate enrollment by 35%. These

greater overall increases are accounted for by an increasing number of transfers to the campuses, largely from community colleges. Graduate education has grown by 44%, driven in part by the growth in baccalaureate degree graduates' increasing demand for graduate education. Over the decade, the percentage of the overall enrollment with North Carolina residency has grown from 83% to 85%.

The makeup and diversity of the enrolled population is changing. Overall, the white population is declining (by 8.1% over the decade) and the minority population is growing, with a minority population of 30% in fall 2009 and a white population of 62.2%.

TABLE 1.1. UNIVERSITY OF NORTH CAROLINA HEADCOUNT ENROLLMENT BY LEVEL, FALL 2000 – FALL 2009

Year	First-Time Freshmen		Undergraduate		Graduate/First-Professional		Total Enrollment	
	In-State	Out-of-State	In-State	Out-of-State	In-State	Out-of-State	In-State	Out-of-State
2000	21,186	3,881	114,327	16,344	24,786	7,304	139,113	23,648
2001	22,116	4,093	118,271	17,296	26,516	7,709	144,787	25,005
2002	22,549	4,172	122,737	17,594	28,601	8,035	151,338	25,629
2003	24,165	4,167	127,211	17,942	30,355	7,839	157,566	25,781
2004	24,626	4,468	131,446	18,589	31,735	7,845	163,181	26,434
2005	26,133	4,227	136,035	18,994	33,026	8,193	169,061	27,187
2006	26,764	4,278	141,136	19,056	33,666	8,523	174,802	27,579
2007	27,440	4,198	146,403	19,049	34,336	9,271	180,739	28,320
2008	27,490	4,437	151,242	19,230	35,183	10,037	186,425	29,267
2009	27,738	4,411	156,660	19,473	35,993	10,196	192,653	29,669

FIGURE 1.1.A. UNC HEADCOUNT ENROLLMENT BY LEVEL, FALL 2000 – FALL 2009

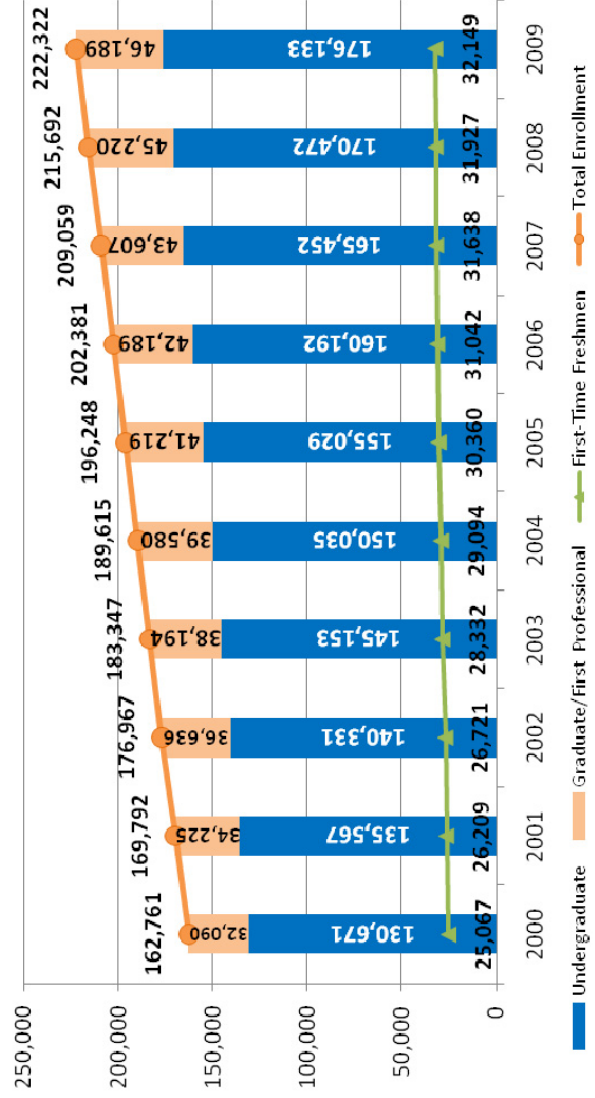


FIGURE 1.1B. UNC FIRST-TIME FRESHMAN ENROLLMENT BY RESIDENCY, FALL 2000 – FALL 2009

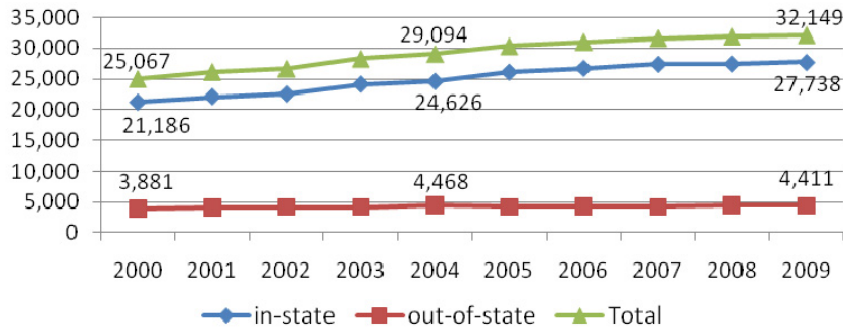


FIGURE 1.1C. UNC UNDERGRADUATE ENROLLMENT BY RESIDENCY, FALL 2000 – FALL 2009

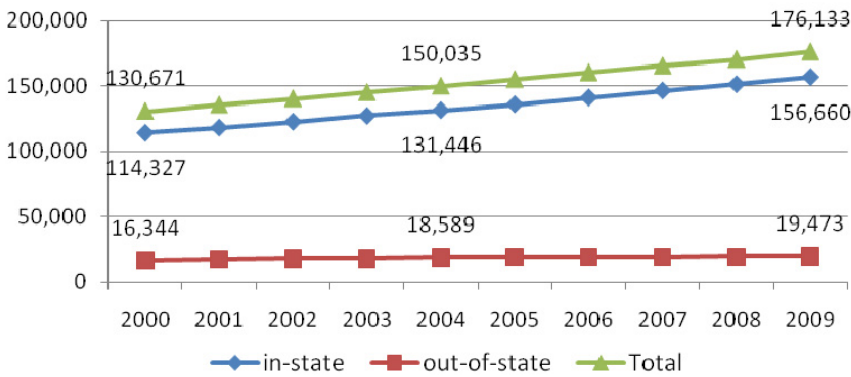


FIGURE 1.1D. UNC GRADUATE/FIRST-PROFESSIONAL ENROLLMENT BY RESIDENCY, FALL 2000 – FALL 2009

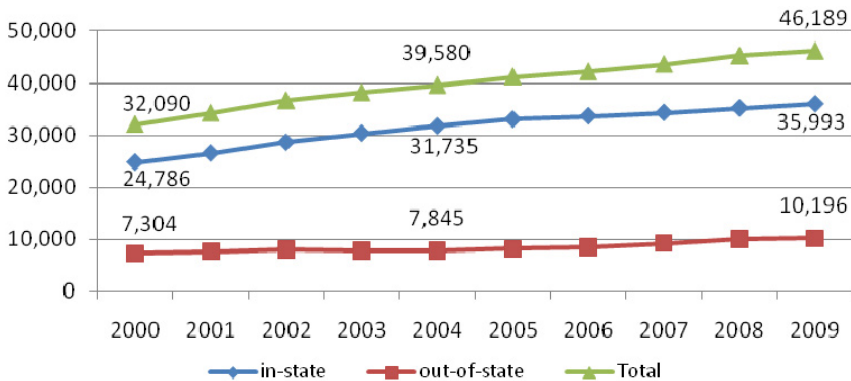


FIGURE 1.1E. UNC TOTAL ENROLLMENT BY RESIDENCY, FALL 2000 – FALL 2009

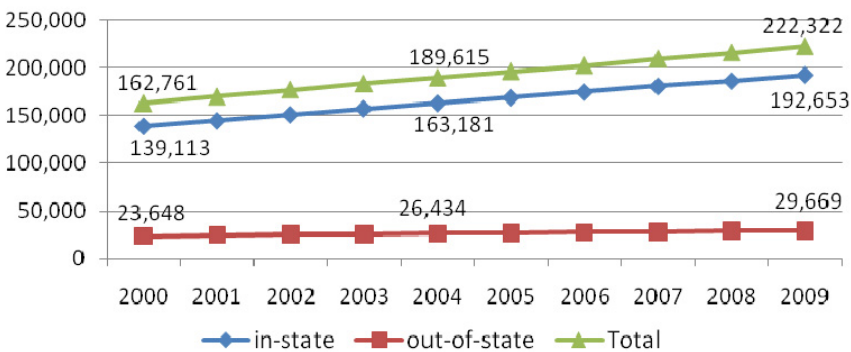


FIGURE 1.1F. DIVERSITY OF STUDENT POPULATION AT UNC, FALL 2000 – FALL 2009

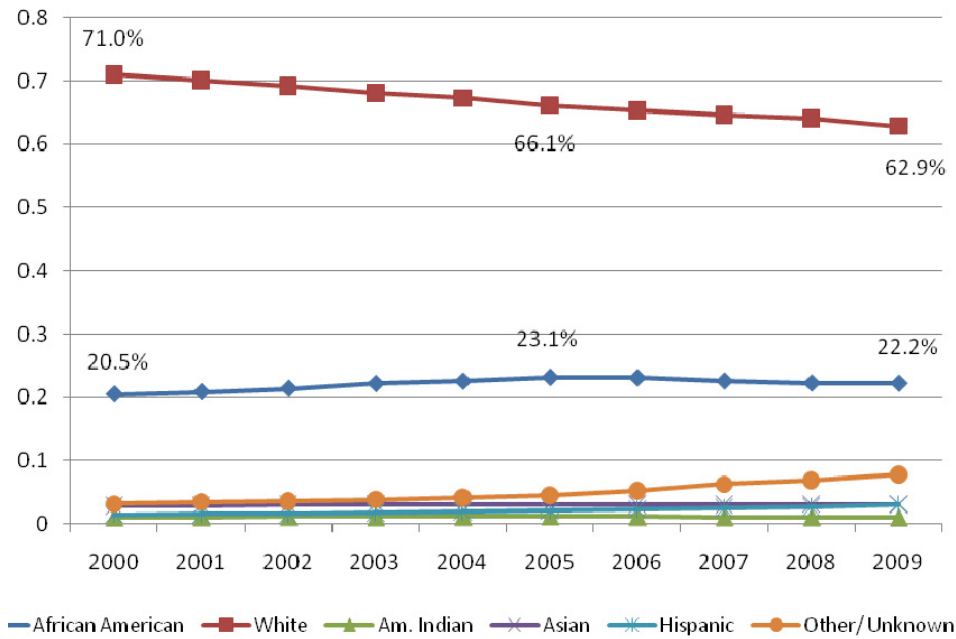
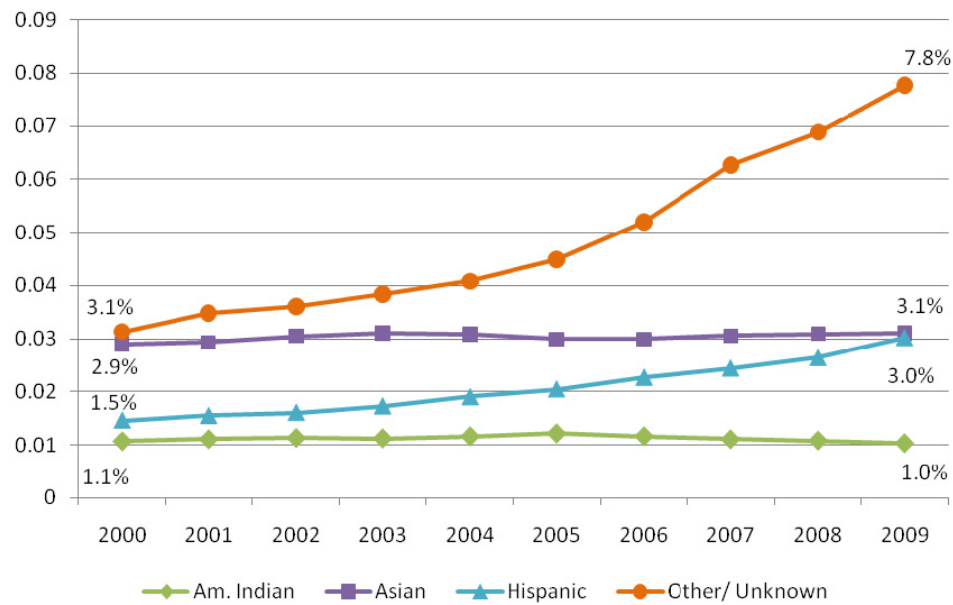


FIGURE 1.1G. GROWTH OF MINORITY STUDENTS AT UNC, FALL 2000 – FALL 2009



Note: "Asian" includes Asian and Hawaiian and Pacific Islander. "Other/Unknown" includes Nonresident Alien (Documented), Unknown, and Two or More Races.

## 1.2. FALL 2009 ENROLLMENT

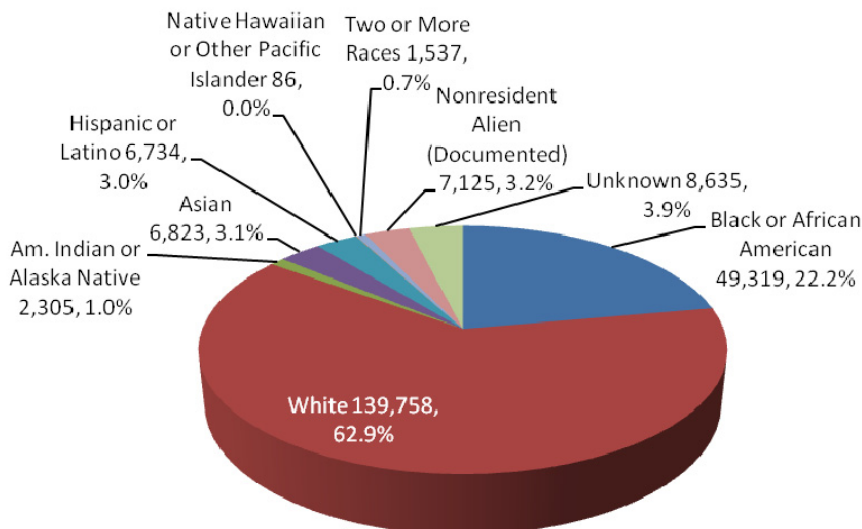
Fall 2009 enrollment grew by 6,630 students to 222,322, the eighth consecutive year enrollment growth exceeded 6,000 students. Included in the overall number are 3,396 high school students who are taking college courses online through the iSchool or are enrolled in an Early College High School on one of our campuses. The current enrollment

plan has a target of 235,180 students for 2012. Given the current growth rate, that target is easily within reach. New projections are being made and a new ten-year enrollment plan will soon be in place. Significant demographic shifts are occurring in North Carolina, due in part to the significant economic downturn the state has experienced.

TABLE 1.2. UNIVERSITY OF NORTH CAROLINA HEADCOUNT ENROLLMENT BY INSTITUTION AND LEVEL, FALL 2009

Institution	Undergraduate			Graduate/First-Professional			Total Enrollment		
	In-State	Out-of-State	Total	In-State	Out-of-State	Total	In-State	Out-of-State	Total
ASU	13,591	1,281	14,872	1,936	160	2,096	15,527	1,441	16,968
ECU	18,786	2,672	21,458	5,640	556	6,196	24,426	3,228	27,654
ECSU	2,779	429	3,208	53	3	56	2,832	432	3,264
FSU	5,320	266	5,586	683	14	697	6,003	280	6,283
NCA&T	7,294	1,661	8,955	1,373	286	1,659	8,667	1,947	10,614
NCCU	5,769	672	6,441	1,897	249	2,146	7,666	921	8,587
NCSU	22,991	2,264	25,255	5,479	3,085	8,564	28,470	5,349	33,819
UNCA	3,413	432	3,845	51	1	52	3,464	433	3,897
UNC-CH	14,838	3,143	17,981	7,414	3,521	10,935	22,252	6,664	28,916
UNCC	17,490	1,929	19,419	4,142	1,140	5,282	21,632	3,069	24,701
UNCG	16,295	1,160	17,455	3,220	631	3,851	19,515	1,791	21,306
UNCP	5,595	315	5,910	734	17	751	6,329	332	6,661
UNCW	9,950	1,641	11,591	1,142	191	1,333	11,092	1,832	12,924
UNCSA	320	427	747	54	71	125	374	498	872
WCU	6,803	647	7,450	1,748	231	1,979	8,551	878	9,429
WSSU	5,426	534	5,960	427	40	467	5,853	574	6,427
UNC Total	156,660	19,473	176,133	35,993	10,196	46,189	192,653	29,669	222,322

FIGURE 1.2. DIVERSITY OF STUDENT POPULATION AT UNC, FALL 2009



### 1.3. DISTANCE EDUCATION

While UNC has long offered degree programs at sites distant from its campuses, the campuses are managing a major transformation in providing educational programs at a distance. Campuses have been developing online degree programs throughout the decade, and in July 2007 the University launched the University of North Carolina Online as the vehicle for aggregating all campus offerings and providing interested students a more convenient way to access online degree programs.

As of May 1, 2010, 232 fully online degree, certificate, and licensure programs were available by way of UNC Online. Of those, 150 were degree programs, 61 baccalaureate completion programs, 87 master's degree programs, and two doctoral degree programs. It is evident that online and face-to-face distance programs will be a growing part of UNC's strategy to provide access and meet the post-secondary educational needs of North Carolinians.

On an annual basis, there were 56,046 unduplicated students enrolled in distance education in FY 2009, an increase of 709% over FY 1999. These students were registered for 412,600 credit hours. Of particular note is the distribution of the enrollment. About a third of the enrolled students were between the ages of 18 and 24, about a third between 25 and 34, and about a third 35 and

above. This means that approximately two-thirds of online and face-to-face distance credit hours are taken by people 25 and up. It is quite clear that among other roles, online and distance education will play a major role in providing degree-based life-long learning. Fifty-eight percent of our online degree programs are at the master's level.

Online degree programs and courses are attracting growing enrollments. Figure 1.3C shows the total online annual unduplicated headcount enrollment. It has grown by 36% in the past two years, while online credit hours have grown by 45%, which suggests that online students are taking more courses. While online degree programs are available for students away from the campus, many online courses also are available to on-campus students. Figure 1.3E isolates the portion of online credit hours that are taken by students away from the campus. Overall, we show a growth of 55% over the past two years. The non-fundable online student credit hours are taken predominately by students from out-of-state. These credit hours are prohibited from being included on the University Funding Formula. Those student credit hours not supported by State appropriation are funded entirely from student tuition. The growth in these credit hours has been almost 275% since 2006-07.

FIGURE 1.3A. GROWTH IN UNDUPLICATED HEADCOUNT ENROLLMENT IN UNC DISTANCE EDUCATION PROGRAMS, FISCAL YEARS 1999 – 2009

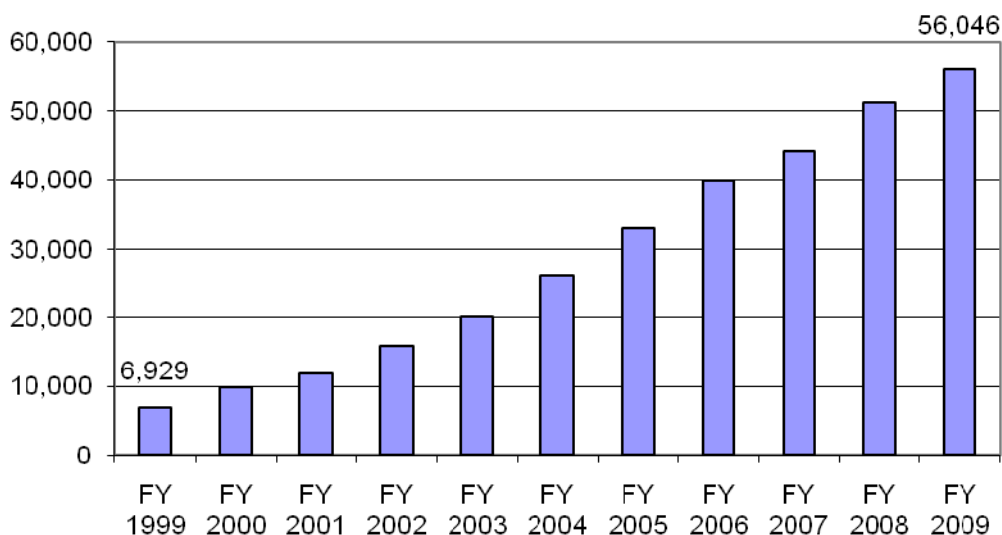


FIGURE 1.3B. PERCENT INCREASE OF ENROLLMENT IN TYPES OF COURSES IN UNC, FALL 2004 – FALL 2009

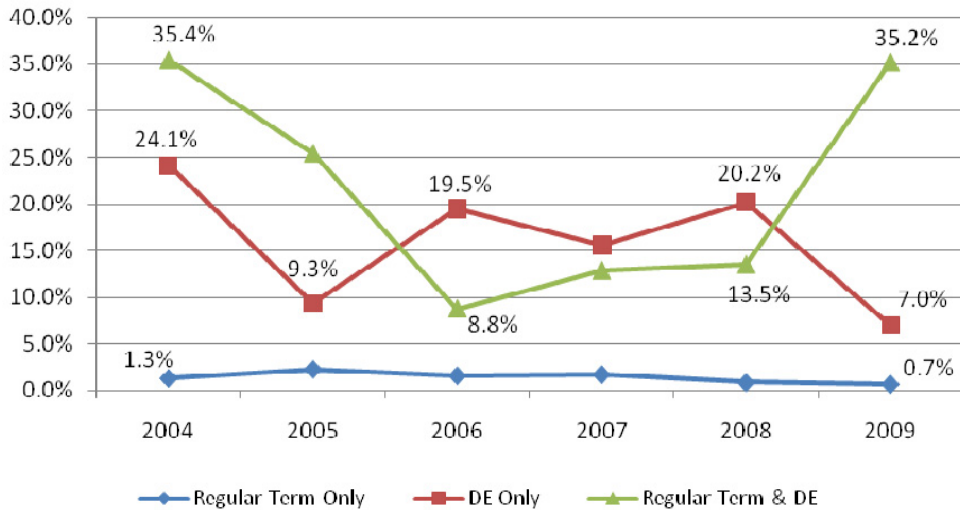


FIGURE 1.3C. ONLINE UNDUPLICATED HEADCOUNT ENROLLMENT

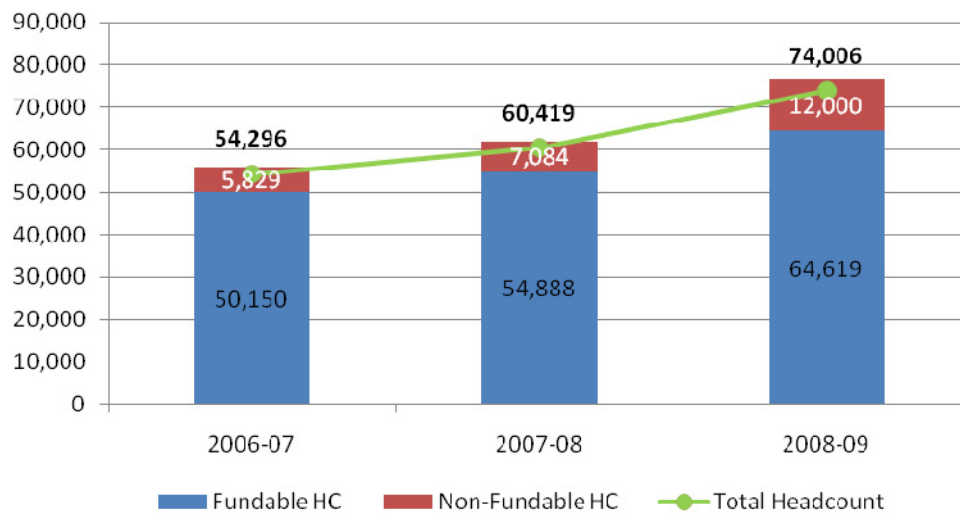


FIGURE 1.3D. TOTAL ONLINE STUDENT CREDIT HOURS

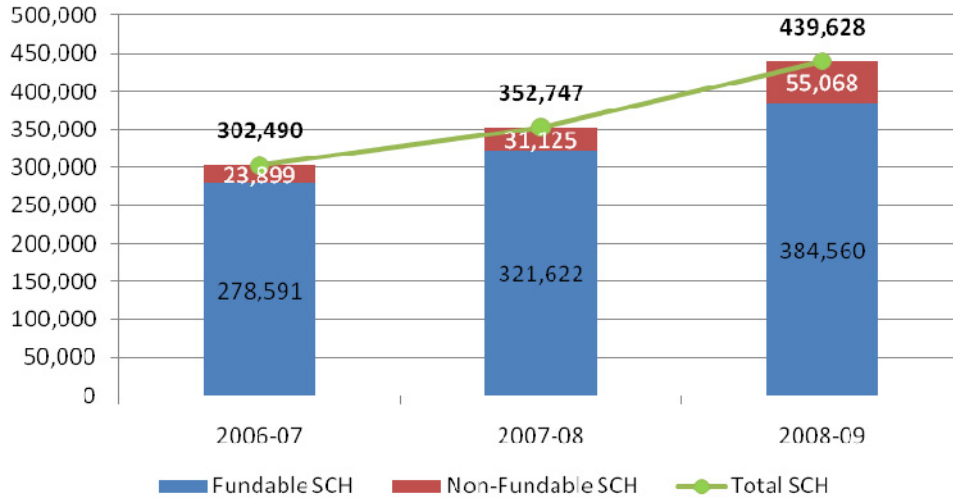


FIGURE 1.3E. ONLINE STUDENT CREDIT HOURS TAKEN AWAY FROM THE CAMPUS

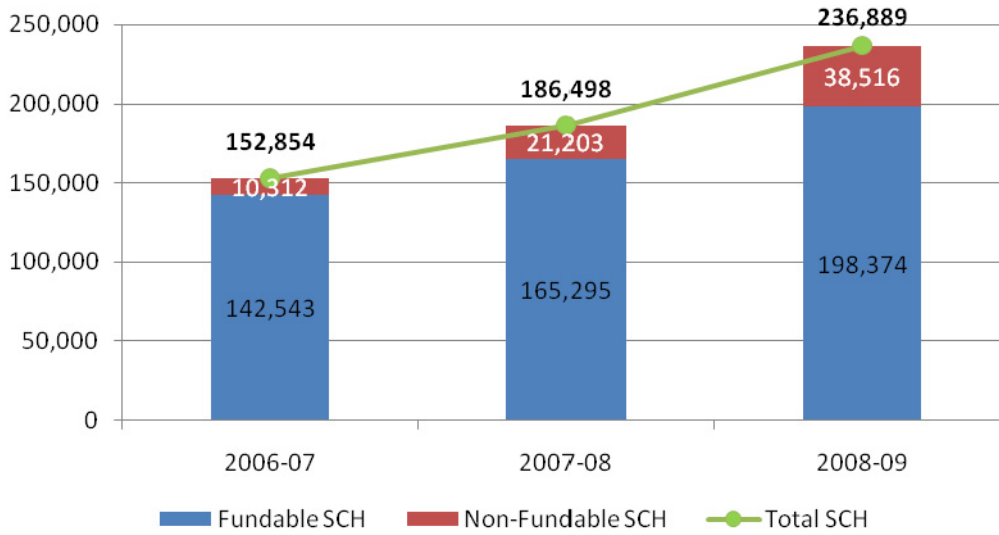


TABLE 1.3A. UNC DISTANCE EDUCATION FUNDED STUDENT CREDIT HOURS (SCH) BY AGE

Year	ASU	ECU	ECSU	FSU	NCA&T	NCCU	NCSU	UNCA	UNC-CH	UNCG	UNCC	UNCP	UNCW	WCU	WSSU	UNC Total
2005																
18-24	1,466	13,923	174	2,034	7,400	2,099	9,964	21	5,392	3,364	786	5,374	1,625	753	677	55,052
25-34	6,416	24,456	244	3,802	3,443	5,057	7,364	60	5,724	4,612	2,979	7,875	1,767	3,442	2,685	79,926
35+	7,997	27,580	496	4,762	2,913	4,430	5,440	267	6,186	5,120	3,077	6,950	1,765	5,410	4,272	86,665
Unknown	18	198	0	156	6	199	814	15	168	46	0	22	0	45	118	1,805
Total	15,897	66,157	914	10,753	13,762	11,785	23,582	363	17,470	13,142	6,842	20,221	5,157	9,650	7,752	223,447
2006																
18-24	1,399	19,993	262	4,173	5,679	1,936	16,486	23	4,579	4,519	711	5,744	2,146	1,619	633	69,902
25-34	7,283	29,650	264	5,664	2,740	5,257	9,771	106	6,288	5,288	3,378	7,935	1,904	5,823	3,098	94,448
35+	9,375	32,312	521	6,822	2,577	5,087	8,175	301	5,689	6,168	3,204	7,872	1,634	8,238	4,953	102,928
Unknown	42	202	10	30	0	451	171	16	162	24	6	72	0	57	235	1,478
Total	18,099	82,157	1,057	16,689	10,996	12,731	34,603	446	16,718	15,999	7,299	21,622	5,684	15,737	8,919	268,756
2007																
18-24	1,448	21,902	294	5,134	13,649	2,689	19,200	84	4,542	6,952	918	6,613	2,501	2,716	888	89,530
25-34	7,300	31,717	208	6,597	4,754	5,455	10,689	82	6,194	7,183	3,215	7,489	2,376	5,988	4,027	103,273
35+	9,651	32,306	404	7,079	4,881	5,557	8,906	260	5,186	7,631	3,563	8,133	2,078	8,678	6,542	110,855
Unknown	114	222	6	75	5	2,455	303	75	222	28	30	6	12	43	15	3,611
Total	18,513	86,147	912	18,885	23,289	16,156	39,098	501	16,143	21,794	7,726	22,241	6,967	17,425	11,472	307,268
2008																
18-24	2,048	30,985	543	6,391	14,636	2,775	22,584	208	4,627	9,007	2,570	6,372	3,552	3,153	817	110,268
25-34	9,327	38,507	221	7,878	5,842	5,990	12,253	61	7,398	8,143	4,431	7,024	2,880	8,018	5,423	123,396
35+	12,350	38,662	333	7,602	5,240	5,648	9,899	334	6,184	8,765	4,163	7,376	2,911	10,597	7,919	127,983
Unknown	27	91	0	21	40	373	211	23	108	329	36	31	40	30	219	1,579
Total	23,752	108,245	1,097	21,892	25,758	14,786	44,947	626	18,317	26,243	11,200	20,803	9,383	21,798	14,378	363,225
2009																
18-24	3,450	35,516	4,382	7,236	12,496	3,694	28,693	328	2,543	11,632	4,367	10,212	4,756	2,487	1,226	133,018
25-34	10,653	42,624	1,948	8,183	5,965	6,275	13,610	93	7,176	8,063	5,874	9,587	3,437	8,180	6,440	138,107
35+	13,127	40,396	1,918	8,043	5,445	5,629	10,476	398	5,438	8,401	5,479	10,058	3,627	10,883	10,252	139,570
Unknown	15	85	110	197	48	324	229	90	90	33	200	91	308	12	74	1,906
Total	27,245	118,621	8,358	23,659	23,954	15,922	53,008	909	15,247	28,129	15,920	29,948	12,128	21,562	17,992	412,600

Source: Fund.GR042F

## 1.4. TRANSFER STUDENTS

While UNC freshman enrollment has increased as indicated in the beginning section, numbering over 32,000 for fall 2009, undergraduate transfers constitute a growing source of new students each year. We have a joint initiative with the Community College System to increase the number of associate's degree graduates who transfer to a UNC institution, but many community college transfers are accepted prior to completing the associate's degree.

We have divided non-associate's degree community college transfers into two groups—those with at least 24 hours of community college coursework and those with less. The division is for purposes of tracking and analysis

and represents an agreement with the community colleges that at least 24 hours of community college coursework is necessary for the college to have an impact on the student.

The fourth category reflects non-NCCCS transfers. The data show that while the transfer of North Carolina Community College System students has increased overall by 21% since 2003, transfers with an associate's degree have increased by 70%. Through this period, slightly more non-NCCCS students have transferred to UNC than NCCCS students, but the gap is narrowing from 17% more from non-NCCCS sources in 2003 to only 9% more in 2008.

**TABLE 1.4. UNDERGRADUATE TRANSFER STUDENTS FROM NORTH CAROLINA COMMUNITY COLLEGE SYSTEM AND OTHER INSTITUTIONS TO UNC CAMPUSES**

Institution	Transfers Status	Fall 2004	Fall 2005	Fall 2006	Fall 2007	Fall 2008
ASU	NCCCS Transfers with Associate's Degree	160	156	139	185	215
	NCCCS Transfers with at Least 24 Credit Hours of CC Coursework	185	196	210	275	288
	Other NCCCS Transfers	141	125	115	78	80
	Total NCCCS Transfers	486	477	464	538	583
	Non-NCCCS Transfers	349	336	388	405	443
	Total Transfers	835	813	852	943	1,026
ECU	NCCCS Transfers with Associate's Degree	213	247	275	337	401
	NCCCS Transfers with at Least 24 Credit Hours of CC Coursework	268	266	292	342	343
	Other NCCCS Transfers	274	205	150	179	135
	Total NCCCS Transfers	755	718	717	858	879
	Non-NCCCS Transfers	607	694	864	810	788
	Total Transfers	1,362	1,412	1,581	1,668	1,667
ECSU	NCCCS Transfers with Associate's Degree	38	33	35	42	17
	NCCCS Transfers with at Least 24 Credit Hours of CC Coursework	20	16	25	22	20
	Other NCCCS Transfers	49	34	29	24	27
	Total NCCCS Transfers	107	83	89	88	64
	Non-NCCCS Transfers	105	86	100	95	119
	Total Transfers	212	169	189	183	183
FSU	NCCCS Transfers with Associate's Degree	69	119	103	147	95
	NCCCS Transfers with at Least 24 Credit Hours of CC Coursework	35	63	59	67	53
	Other NCCCS Transfers	103	124	90	119	124
	Total NCCCS Transfers	207	306	252	333	272
	Non-NCCCS Transfers	214	393	417	375	295
	Total Transfers	421	699	669	708	567
NCA&T	NCCCS Transfers with Associate's Degree	43	37	47	23	29
	NCCCS Transfers with at Least 24 Credit Hours of CC Coursework	44	51	48	44	38
	Other NCCCS Transfers	88	96	96	37	45
	Total NCCCS Transfers	175	184	191	104	112
	Non-NCCCS Transfers	290	320	353	212	153
	Total Transfers	465	504	544	316	265
NCCU	NCCCS Transfers with Associate's Degree	39	53	32	42	43
	NCCCS Transfers with at Least 24 Credit Hours of CC Coursework	38	33	22	29	44
	Other NCCCS Transfers	80	71	60	36	52
	Total NCCCS Transfers	157	157	114	107	139
	Non-NCCCS Transfers	218	226	213	151	169
	Total Transfers	375	383	327	258	308

Institution	Transfers Status	Fall 2004	Fall 2005	Fall 2006	Fall 2007	Fall 2008
NCSU	NCCCS Transfers with Associate's Degree	141	141	145	137	132
	NCCCS Transfers with at Least 24 Credit Hours of CC Coursework	173	149	189	220	238
	Other NCCCS Transfers	101	80	65	59	59
	Total NCCCS Transfers	415	370	399	416	429
	Non-NCCCS Transfers	651	691	709	646	664
	Total Transfers	1,066	1,061	1,108	1,062	1,093
UNCA	NCCCS Transfers with Associate's Degree	43	62	65	69	71
	NCCCS Transfers with at Least 24 Credit Hours of CC Coursework	38	42	59	54	65
	Other NCCCS Transfers	27	34	21	17	20
	Total NCCCS Transfers	108	138	145	140	156
	Non-NCCCS Transfers	119	150	160	147	141
	Total Transfers	227	288	305	287	297
UNC-CH	NCCCS Transfers with Associate's Degree	79	78	94	106	122
	NCCCS Transfers with at Least 24 Credit Hours of CC Coursework	63	53	73	57	56
	Other NCCCS Transfers	61	34	33	40	16
	Total NCCCS Transfers	203	165	200	203	194
	Non-NCCCS Transfers	625	662	678	590	589
	Total Transfers	828	827	878	793	783
UNCC	NCCCS Transfers with Associate's Degree	238	284	317	282	363
	NCCCS Transfers with at Least 24 Credit Hours of CC Coursework	286	315	306	348	372
	Other NCCCS Transfers	354	342	262	253	245
	Total NCCCS Transfers	878	941	885	883	980
	Non-NCCCS Transfers	931	978	1,021	1,150	1,177
	Total Transfers	1,809	1,919	1,906	2,033	2,157
UNCG	NCCCS Transfers with Associate's Degree	168	185	255	251	298
	NCCCS Transfers with at Least 24 Credit Hours of CC Coursework	177	178	268	281	299
	Other NCCCS Transfers	161	169	168	134	144
	Total NCCCS Transfers	506	532	691	666	741
	Non-NCCCS Transfers	512	707	716	772	754
	Total Transfers	1,018	1,239	1,407	1,438	1,495
UNCP	NCCCS Transfers with Associate's Degree	110	112	126	114	120
	NCCCS Transfers with at Least 24 Credit Hours of CC Coursework	76	97	85	76	103
	Other NCCCS Transfers	129	115	99	78	89
	Total NCCCS Transfers	315	324	310	268	312
	Non-NCCCS Transfers	187	173	214	209	239
	Total Transfers	502	497	524	477	551
UNCW	NCCCS Transfers with Associate's Degree	266	280	349	363	344
	NCCCS Transfers with at Least 24 Credit Hours of CC Coursework	277	265	340	375	318
	Other NCCCS Transfers	124	103	110	75	71
	Total NCCCS Transfers	667	648	799	813	733
	Non-NCCCS Transfers	617	638	599	481	546
	Total Transfers	1,284	1,286	1,398	1,294	1,279
UNCSA	NCCCS Transfers with Associate's Degree	0	2	1	3	4
	NCCCS Transfers with at Least 24 Credit Hours of CC Coursework	0	2	1	7	3
	Other NCCCS Transfers	5	8	4	0	2
	Total NCCCS Transfers	5	12	6	10	9
	Non-NCCCS Transfers	54	54	48	47	45
	Total Transfers	59	66	54	57	54
WCU	NCCCS Transfers with Associate's Degree	133	128	158	182	172
	NCCCS Transfers with at Least 24 Credit Hours of CC Coursework	56	84	104	106	99
	Other NCCCS Transfers	166	146	137	115	94
	Total NCCCS Transfers	355	358	399	403	365
	Non-NCCCS Transfers	299	370	195	371	377
	Total Transfers	654	728	594	774	742
WSSU	NCCCS Transfers with Associate's Degree	45	46	31	67	93
	NCCCS Transfers with at Least 24 Credit Hours of CC Coursework	44	30	29	44	54
	Other NCCCS Transfers	151	170	77	127	106
	Total NCCCS Transfers	240	246	137	238	253
	Non-NCCCS Transfers	268	206	239	369	304
	Total Transfers	508	452	376	607	557
UNC Total	NCCCS Transfers with Associate's Degree	1,785	1,963	2,172	2,350	2,519
	NCCCS Transfers with at Least 24 Credit Hours of CC Coursework	1,780	1,840	2,110	2,347	2,393
	Other NCCCS Transfers	2,014	1,856	1,516	1,371	1,309
	Total NCCCS Transfers	5,579	5,659	5,798	6,068	6,221
	Non-NCCCS Transfers	6,046	6,684	6,914	6,830	6,803
	Total Transfers	11,625	12,343	12,712	12,898	13,024

Source: Persist.PR009B

## II. RETENTION AND GRADUATION

### 2.1. RETENTION, GRADUATION, TARGETS, AND PERFORMANCE

UNC General Administration and the campuses have agreed on targets for several measures of student success. These include first-time full-time freshmen's retention to the sophomore year, four- and six-year graduation rates, and graduation rates for transfers from the community colleges with an associate's degree. For each of the measures, we have data tables that provide five years of actual rates, five years of targets for that measure, and a comparison of each campus's performance in relation to the target for 2008-09, the first year of the targets.

It is important to understand the context for these measures. The measures are set by the US Department of Education and are widely used for comparison purposes. We add context and additional measures to provide perspective on our student population. Two factors are of growing significance. Students are transferring in greater numbers and many of our freshmen transfer to another university; both groups of students may graduate at some point, but neither group is counted in the native retention and graduation rates. We traditionally could track freshmen who transferred to another UNC campus, but if they moved on to a private institution or out of state we had no way to track them. The development of the

National Student Clearinghouse now enables us to track them wherever they go. For example, Appalachian State University has a six-year graduation rate of 64.4% as measured by the traditional standard. If their freshmen are tracked within the whole University, the graduation rate jumps to 70.7%. If their freshmen are also tracked through the National Student Clearinghouse, then 75.3% graduate from some college or university within six years. And we can determine that another 10.5% are still enrolled and seeking a degree at ASU or another college or university.

While we will focus on the targets and performance, other data will provide perspective on traditional measures. UNC campuses are committed to relating enrollment and enrollment growth to successful performance in meeting their targets. Academic year 2008-09 was the first year in the five years of targets that we set, and it is the first year for which we have actual data for determining whether the targets were met. We will be using these data to work out a model of how enrollment and performance should be linked. In addition, the five-year targets will be rolling targets, with targets for an additional year or years added after each performance measure is completed.

---

#### 2.1A. FRESHMAN-TO-SOPHOMORE RETENTION

This measure is of the percentage of first-time full-time freshmen at each campus in the fall of 2008 who were enrolled at the same campus in the fall of 2009. The layout is as follows: Five years of actual retention rates are arrayed on the left side of the table and four years of targets are on the right. In the center section the agreed-upon goal is on the left, the actual performance is in the center, and the difference is on the right. For the University, the retention rate was 82.7%, an increase of 1.5 percentage points, which indicates overall improvement. Ten campuses met or exceeded their retention target and six did not meet the target, but five of them missed it by less than a percentage point.

TABLE 2.1A. FRESHMAN-TO-SOPHOMORE RETENTION RATES, TARGETS, AND PERFORMANCE

Institution	Actual					2008 (2009)			Goals			
	2003 (2004)	2004 (2005)	2005 (2006)	2006 (2007)	2007 (2008)	Goal	Actual	Difference	2009 (2010)	2010 (2011)	2011 (2012)	2012 (2013)
	NCSU	90.7%	89.2%	89.4%	89.2%	89.6%	90.5%	90.9%	0.4%	91.0%	91.0%	91.5%
UNC-CH	95.4%	96.6%	96.6%	96.5%	96.2%	96.5%	95.7%	-0.8%	96.5%	96.5%	96.5%	96.5%
ECU	78.8%	75.9%	78.7%	77.3%	75.9%	79.0%	78.8%	-0.2%	81.0%	82.0%	82.5%	83.0%
UNCG	77.0%	77.5%	76.3%	75.9%	76.0%	76.6%	76.6%	0.0%	77.4%	78.3%	79.1%	80.0%
UNCC	77.1%	78.7%	77.4%	77.0%	78.1%	78.0%	77.9%	-0.1%	79.0%	80.0%	81.0%	82.0%
NCA&T	73.1%	72.5%	68.9%	71.7%	73.6%	72.0%	77.1%	5.1%	74.0%	76.5%	77.0%	80.0%
ASU	84.4%	85.8%	84.5%	85.6%	87.4%	86.0%	86.4%	0.4%	87.0%	88.0%	90.0%	90.0%
UNCW	85.7%	83.2%	83.1%	84.5%	85.4%	86.0%	84.7%	-1.3%	87.0%	88.0%	89.0%	90.0%
WCU	73.9%	70.9%	71.3%	66.5%	71.5%	69.0%	76.2%	7.2%	72.0%	73.0%	74.0%	75.0%
NCCU	77.8%	76.4%	71.0%	77.3%	71.6%	76.0%	77.0%	1.0%	77.0%	78.0%	79.0%	80.0%
FSU	72.7%	75.4%	70.8%	73.3%	69.2%	74.0%	73.6%	-0.4%	76.0%	77.0%	78.0%	80.0%
WSSU	77.7%	75.3%	73.0%	68.0%	73.4%	71.0%	77.8%	6.8%	73.0%	75.0%	78.0%	80.0%
UNCP	67.1%	72.3%	67.5%	71.5%	67.3%	70.8%	67.5%	-3.3%	72.0%	73.0%	74.0%	75.0%
EGSU	76.3%	74.7%	72.3%	79.4%	76.7%	76.0%	76.3%	0.3%	77.0%	78.0%	80.0%	80.0%
UNCA	79.9%	76.4%	80.5%	76.3%	78.5%	80.0%	81.9%	1.9%	81.5%	82.0%	83.0%	84.0%
UNCSA	76.9%	73.9%	76.6%	81.1%	77.5%	76.0%	77.4%	1.4%	77.0%	77.0%	77.0%	78.0%
UNC Total	81.8%	81.3%	80.6%	81.0%	81.3%		82.7%					

Note: Numbers represent the retention rates of first-time full-time freshmen enrolled in the fall semester of the indicated years. The years in parentheses are the sophomore years.

## 2.1B. FOUR-YEAR GRADUATION RATES

While some campuses met or exceeded their targets, not much progress was made on this measure. Nationally the four-year graduation rate averages approximately 30%. It should be clear that this is just a measure of the time that

has passed since students enrolled as first-time full-time freshmen. If they took a term off, the clock is still ticking on this measure.

TABLE 2.1B. FIRST-TIME FULL-TIME FRESHMAN FOUR-YEAR GRADUATION RATES, TARGETS, AND PERFORMANCE

Institution	Actual					2005 (2009)		Goals				
	2000 (2004)	2001 (2005)	2002 (2006)	2003 (2007)	2004 (2008)	Goal	Difference	2006 (2010)	2007 (2011)	2008 (2012)	2009 (2013)	
	NCSU	36.9%	36.8%	38.5%	41.5%	41.3%	40.0%	0.8%	41.0%	42.0%	43.0%	43.0%
UNC-CH	71.2%	70.9%	73.2%	72.2%	74.4%	73.0%	2.2%	73.5%	74.0%	75.0%	75.0%	
ECU	27.6%	25.5%	27.2%	29.9%	29.2%	31.0%	1.5%	31.5%	32.5%	33.0%	33.5%	
UNCG	29.8%	26.9%	27.5%	28.3%	28.9%	29.4%	-1.5%	30.6%	31.7%	32.9%	34.0%	
UNCC	25.8%	26.4%	24.2%	25.5%	27.0%	27.5%	-1.6%	26.2%	26.8%	27.8%	28.8%	
NCA&T	19.3%	20.1%	14.8%	17.5%	15.1%	19.0%	-2.5%	21.0%	23.0%	25.0%	28.0%	
ASU	34.2%	37.1%	39.9%	37.3%	37.3%	41.0%	-2.7%	42.0%	43.0%	44.0%	45.0%	
UNCW	42.8%	41.5%	44.9%	44.3%	44.5%	42.0%	1.5%	44.0%	46.0%	48.0%	50.0%	
WCU	24.6%	22.5%	28.2%	26.4%	28.3%	27.0%	2.1%	27.5%	28.0%	30.0%	30.0%	
NCCU	22.5%	22.8%	23.3%	18.5%	18.0%	21.0%	-5.9%	23.0%	25.0%	27.0%	30.0%	
FSU	14.2%	15.7%	18.4%	12.7%	11.4%	15.0%	-5.7%	17.0%	19.0%	21.0%	25.0%	
WSSU	19.4%	20.2%	18.1%	14.0%	13.1%	17.0%	-1.1%	19.0%	21.0%	23.0%	25.0%	
UNCP	20.1%	14.7%	14.2%	16.4%	15.2%	18.0%	-3.3%	19.0%	21.0%	23.0%	25.0%	
ECSU	30.0%	28.1%	23.6%	22.7%	19.2%	22.0%	-4.2%	23.0%	25.0%	26.0%	28.0%	
UNCA	30.9%	33.2%	33.1%	28.7%	29.8%	31.0%	1.7%	33.0%	35.0%	36.0%	38.0%	
UNCSA	49.7%	46.6%	52.1%	58.7%	51.4%	53.0%	0.8%	55.0%	55.0%	58.0%	58.0%	
UNC Total	35.5%	35.1%	35.1%	34.9%	35.0%		35.2%					

Note: Numbers represent the graduation rates of first-time full-time freshmen enrolled in the fall semester of the indicated years. The years in parentheses are the graduation years.

### 2.1.C. SIX-YEAR GRADUATION RATES

The six-year graduation rate has become the de facto measure for successful graduation, since students may both take semesters off and change to part-time during their enrollment. The six years is a clock measure that asks, after a student enrolls as a first-time freshman: Have they graduated from the

institution they started in after six years have elapsed? Ten of the campuses met or exceeded their targets, but four campuses were at least five percentage points below their target.

TABLE 2.1.C. FIRST-TIME FULL-TIME FRESHMAN SIX-YEAR GRADUATION RATES, TARGETS, AND PERFORMANCE

Institution	Actual						2003 (2009)		Goals			
	1998 (2004)	1999 (2005)	2000 (2006)	2001 (2007)	2002 (2008)	Goal	Actual	Difference	2004 (2010)	2005 (2011)	2006 (2012)	2007 (2013)
	NCSU	66.9%	70.5%	70.3%	69.6%	71.5%	72.0%	73.2%	1.2%	72.5%	73.0%	73.5%
UNC-CH	81.7%	83.8%	83.8%	82.6%	86.1%	83.5%	84.9%	1.4%	84.5%	86.0%	87.0%	87.0%
ECU	53.3%	54.4%	56.4%	54.4%	54.3%	56.5%	56.8%	0.3%	57.0%	58.0%	59.0%	60.0%
UNCG	50.2%	51.1%	52.0%	49.8%	52.5%	51.8%	51.6%	-0.2%	53.9%	55.9%	58.1%	60.0%
UNCC	46.6%	48.7%	49.8%	50.5%	50.6%	50.0%	53.9%	3.9%	51.0%	52.0%	52.0%	53.0%
NCA&T	42.5%	39.5%	38.0%	41.4%	37.7%	43.0%	37.2%	-5.8%	45.0%	46.0%	48.0%	50.0%
ASU	60.3%	64.0%	61.6%	62.5%	63.9%	64.0%	64.4%	0.4%	65.0%	66.0%	67.0%	68.0%
UNCW	61.2%	63.5%	65.1%	64.8%	67.1%	67.0%	68.5%	1.5%	68.0%	69.0%	70.0%	71.0%
WCU	46.0%	47.3%	46.7%	47.4%	49.5%	48.5%	48.8%	0.3%	49.5%	51.5%	53.0%	55.0%
NCCU	50.8%	44.9%	49.3%	48.3%	47.9%	50.0%	44.4%	-5.6%	51.0%	52.0%	53.0%	55.0%
FSU	34.9%	42.2%	37.0%	35.6%	38.0%	40.0%	31.5%	-8.5%	42.0%	45.0%	46.0%	47.0%
WSSU	44.1%	47.9%	44.1%	45.1%	39.3%	46.0%	36.5%	-9.5%	47.0%	48.0%	50.0%	52.0%
UNCP	41.6%	34.9%	37.6%	34.0%	33.4%	36.0%	34.1%	-1.9%	37.0%	38.0%	40.0%	42.0%
ECSU	45.4%	49.1%	49.3%	50.7%	42.8%	43.0%	45.8%	2.8%	45.0%	47.0%	49.0%	52.0%
UNCA	51.5%	53.1%	53.3%	53.6%	59.6%	56.0%	58.7%	2.7%	56.0%	58.0%	60.0%	60.0%
UNCSA	49.6%	57.0%	54.2%	51.4%	55.6%	53.0%	61.2%	8.2%	55.0%	55.0%	58.0%	58.0%
UNC Total	57.9%	59.1%	59.3%	58.7%	58.8%		58.8%					

Note: Numbers represent the graduation rates of first-time full-time freshmen enrolled in the fall semester of the indicated years. The years in parentheses are the graduation years.

### 2.1.D. GRADUATION RATES FOR COMMUNITY COLLEGE TRANSFERS

Since we have a growing number of transfers from community colleges into UNC and expect this cohort of students to continue to grow, UNC will track the graduation rates of community college transfers. In order to have numbers that are large enough to be meaningful, we measure multiple-year cohorts. Those being tracked are from a three-year period in which students transferred into a UNC institution, and their graduation period is also a three-year period. The measure is graduation within four years of transferring to a UNC campus. For example, the period measured is for those students who transferred in the years 2002-04 and graduated in the years 2006-08. Students are measured by whether they have graduated after four years, but since the cohort will have entered in

different years, four years will elapse at different times for different students in the cohort. If one reviews the actual graduation rates, it is evident that there is some volatility from year to year in completion rates. While overall there was a one percentage point improvement over the previous period, ten of the campuses fell below their targets. This is an area where UNC and the campuses need more experience in promoting student success for community college transfers. Since associate's degree transfers are considered equal to college juniors, the following table adds another column in the center, which shows the graduation rates of native juniors at each campus for comparison purposes.

**TABLE 2.1D. FOUR-YEAR GRADUATION RATES, TARGETS, AND PERFORMANCE OF NCCCS ASSOCIATE'S DEGREE RECIPIENTS WHO TRANSFERRED TO UNC INSTITUTIONS**

Institution	Actual					2002-04 (2006-08)			Goals					
	1997-99 (2001-03)	1998-00 (2002-04)	1999-01 (2003-05)	2000-02 (2004-06)	2001-03 (2005-07)	Goal	Actual	Difference	Grad Rates	Native Jr Grad Rates	2003-05 (2007-09)	2004-06 (2008-10)	2005-07 (2009-11)	2006-08 (2010-12)
NCSU	65.0%	79.0%	72.0%	74.0%	72.0%	72.0%	75.0%	3.0	91.0%	91.0%	72.5%	73.0%	73.5%	73.5%
UNC-CH	71.0%	75.0%	72.0%	71.0%	68.0%	69.0%	68.0%	-1.0	92.0%	92.0%	69.0%	69.0%	69.0%	69.0%
ECU	63.0%	72.0%	70.0%	69.0%	68.0%	71.0%	68.0%	-3.0	89.0%	89.0%	72.0%	72.5%	73.0%	74.0%
UNCG	66.0%	69.0%	67.0%	65.0%	65.0%	67.0%	63.0%	-4.0	90.0%	90.0%	67.0%	67.0%	67.0%	68.0%
UNCC	60.0%	63.0%	63.0%	64.0%	66.0%	62.5%	68.0%	5.5	88.0%	88.0%	63.0%	63.5%	64.0%	65.0%
NCA&T	46.0%	58.0%	54.0%	56.0%	50.0%	51.0%	53.0%	2.0	76.0%	76.0%	51.0%	52.0%	53.0%	54.0%
ASU	76.0%	74.0%	75.0%	75.0%	75.0%	78.0%	74.0%	-4.0	90.0%	90.0%	78.0%	79.0%	79.0%	80.0%
UNCW	75.0%	79.0%	77.0%	79.0%	79.0%	78.0%	81.0%	3.0	93.0%	93.0%	79.0%	79.0%	80.0%	81.0%
WCU	76.0%	76.0%	73.0%	75.0%	74.0%	76.5%	73.0%	-3.5	88.0%	88.0%	77.0%	77.5%	78.0%	79.0%
NCCU	61.0%	60.0%	63.0%	64.0%	58.0%	63.0%	55.0%	-8.0	77.0%	77.0%	64.0%	65.0%	66.0%	67.0%
FSU	55.0%	45.0%	54.0%	61.0%	64.0%	58.0%	63.0%	5.0	79.0%	79.0%	60.0%	62.0%	64.0%	65.0%
WSSU	72.0%	43.0%	53.0%	48.0%	56.0%	65.0%	57.0%	-8.0	74.0%	74.0%	66.0%	67.0%	68.0%	68.0%
UNCP	70.0%	73.0%	71.0%	67.0%	64.0%	71.0%	59.0%	-12.0	81.0%	81.0%	72.0%	73.0%	74.0%	75.0%
ECSU	69.0%	58.0%	63.0%	62.0%	64.0%	66.0%	61.0%	-5.0	86.0%	86.0%	67.0%	68.0%	69.0%	70.0%
UNCA	58.0%	60.0%	68.0%	59.0%	63.0%	67.0%	60.0%	-7.0	90.0%	90.0%	68.0%	69.0%	70.0%	70.0%
UNCSA	n/a	100.0%	33.0%	60.0%	43.0%	n/a	60.0%	n/a	33.0%	33.0%	n/a	n/a	n/a	n/a
UNC Total	67.0%	70.0%	69.0%	70.0%	69.0%	70.0%	70.0%		88.0%	88.0%				

Notes: 1. Numbers represent the graduation rates of NC community college associate's degree recipients who transferred to UNC institutions in the indicated 3 years. The years in parentheses are the measuring years in which those transfers graduated.

2. "n/a" stands for not applicable.

## 2.2. RETENTION, GRADUATION, AND PROGRESS RATES

As indicated above, it is important to recognize that if a student transfers to another university, he or she is considered a drop-out both for retention and graduation as measured by the US Department of Education standard. However, we can track student movement among UNC campuses and can recalculate the

graduation rate for each institution to reflect the fact that someone who began at their institution graduated from another campus. Again, this provides context and perspective on the mobility of students.

### 2.2.A. RETENTION

While the overall difference between the UNC retention rate within each original institution and the rate within the whole University is 2.8 percentage points, on some campuses the difference is over four percentage points.

TABLE 2.2.A. UNC FIRST-TIME FULL-TIME FRESHMAN-TO-SOPHOMORE RETENTION RATES

Institution	Tracking within Original Institution					Tracking within the Whole University				
	2004 cohort	2005 cohort	2006 cohort	2007 cohort	2008 cohort	2004 cohort	2005 cohort	2006 cohort	2007 cohort	2008 cohort
ASU	85.8%	84.5%	85.6%	87.4%	86.4%	89.9%	88.5%	88.6%	89.9%	89.3%
ECU	75.9%	78.7%	77.3%	75.9%	78.8%	79.2%	81.7%	80.3%	78.9%	81.4%
ECSU	74.7%	72.3%	79.4%	76.7%	76.3%	78.3%	75.4%	81.1%	80.4%	79.2%
FSU	75.4%	70.9%	73.3%	69.2%	73.6%	78.2%	73.5%	75.6%	73.1%	79.3%
NCA&T	72.5%	68.9%	71.7%	73.6%	77.1%	74.2%	71.0%	74.3%	74.8%	78.3%
NCCU	76.4%	71.0%	77.3%	71.6%	77.0%	78.9%	75.1%	79.8%	74.0%	80.5%
NCSU	88.8%	89.4%	89.2%	89.6%	90.9%	91.8%	92.2%	91.7%	91.8%	93.1%
UNCA	76.4%	80.5%	76.3%	78.5%	81.9%	80.5%	85.1%	80.0%	83.6%	86.0%
UNC-CH	96.6%	96.6%	96.5%	96.2%	95.7%	97.3%	97.7%	97.6%	96.8%	96.3%
UNCC	78.7%	77.4%	77.0%	78.1%	77.9%	81.5%	80.8%	80.4%	82.0%	81.8%
UNCG	77.5%	76.3%	75.7%	75.4%	76.6%	81.0%	80.3%	79.3%	80.4%	80.5%
UNCP	72.3%	67.5%	71.5%	67.3%	67.5%	76.2%	71.1%	75.5%	71.7%	72.1%
UNCW	83.2%	83.1%	84.5%	85.4%	84.7%	87.8%	87.3%	87.8%	88.6%	88.4%
UNCSA	73.9%	76.6%	81.1%	77.5%	77.4%	74.8%	79.7%	82.8%	78.7%	78.7%
WCU	70.9%	71.3%	66.4%	71.4%	76.2%	77.2%	76.8%	73.1%	77.0%	81.1%
WSSU	75.3%	73.0%	68.0%	73.4%	77.8%	78.9%	76.5%	71.2%	76.7%	81.2%
UNC Total	81.3%	80.6%	81.0%	81.2%	82.7%	84.4%	83.8%	83.9%	84.2%	85.5%

Source: Persist.ER001

## 2.2.B. FOUR-YEAR GRADUATION RATE

One would not expect much variation on this measure since transferring would likely make it more difficult to complete one's degree in four years. However, one of the largest differences is found at UNC Asheville, since it has some programs

with other campuses, such as NC State, that are organized to enable students to transfer to a sister UNC campus after two years.

TABLE 2.2.B. UNC FIRST-TIME FULL-TIME FRESHMAN 4-YEAR GRADUATION RATES

Institution	Tracking within Original Institution					Tracking within the Whole University				
	2001 cohort	2002 cohort	2003 cohort	2004 cohort	2005 cohort	2001 cohort	2002 cohort	2003 cohort	2004 cohort	2005 cohort
ASU	37.1%	39.9%	37.3%	37.3%	38.3%	39.2%	42.5%	39.6%	39.5%	40.8%
ECU	25.5%	27.2%	29.9%	29.2%	32.5%	26.6%	28.4%	31.2%	30.8%	33.8%
ECSU	28.1%	23.6%	22.7%	19.2%	17.8%	28.7%	23.8%	23.5%	19.7%	18.2%
FSU	15.7%	18.4%	12.7%	11.4%	9.3%	16.1%	18.7%	13.4%	11.8%	9.8%
NCA&T	20.1%	14.8%	17.5%	15.1%	16.5%	20.3%	15.2%	17.7%	15.5%	16.8%
NCCU	22.8%	23.3%	18.5%	18.0%	15.1%	23.6%	23.6%	19.3%	18.5%	15.9%
NCSU	36.8%	38.5%	41.5%	41.2%	40.8%	37.9%	40.1%	43.3%	43.1%	42.5%
UNCA	33.2%	33.1%	28.7%	29.8%	32.7%	36.5%	35.0%	30.7%	32.7%	37.6%
UNC-CH	70.9%	72.7%	72.2%	74.4%	75.2%	72.0%	73.8%	72.8%	75.0%	75.8%
UNCC	26.4%	24.2%	25.5%	27.0%	25.9%	28.2%	26.1%	27.3%	28.6%	27.8%
UNCG	26.9%	27.5%	28.3%	28.9%	27.9%	28.7%	29.7%	30.4%	30.8%	29.7%
UNCP	14.7%	14.2%	16.4%	15.2%	14.7%	16.1%	15.6%	18.3%	16.1%	16.0%
UNCW	41.5%	44.9%	44.3%	44.5%	43.5%	44.3%	47.8%	46.9%	47.7%	45.9%
UNCSA	46.6%	52.1%	58.7%	51.4%	53.8%	47.3%	52.1%	59.5%	51.4%	56.3%
WCU	22.5%	28.2%	26.4%	28.3%	29.1%	24.5%	29.1%	27.4%	30.9%	31.0%
WSSU	20.2%	18.1%	14.0%	13.1%	15.9%	21.3%	18.5%	14.6%	13.6%	17.0%
UNC Total	35.1%	35.1%	34.9%	35.0%	35.2%	36.5%	36.5%	36.3%	36.5%	36.7%

Source: Persist.ER001

## 2.2.C. SIX-YEAR GRADUATION RATE

Here there is a 4.6 percentage point difference overall between the rate within each original institution and the rate within the whole University. Given the size of the 2003 cohort, this would equate to over 1,300 students who graduated from a different campus within the University from the one they started at. Some of

the larger differences are at UNC Wilmington, which has over an 8 percentage point higher graduation rate within the whole University, and UNC Asheville, which has an almost 10 percentage point higher rate.

**TABLE 2.2.C. UNC FIRST-TIME FULL-TIME FRESHMAN SIX-YEAR GRADUATION RATES**

Institution	Tracking within Original Institution				Tracking within the Whole University					
	1999 cohort	2000 cohort	2001 cohort	2002 cohort	2003 cohort	1999 cohort	2000 cohort	2001 cohort	2002 cohort	2003 cohort
ASU	64.0%	61.6%	62.5%	63.9%	64.4%	70.0%	68.4%	69.6%	71.5%	70.7%
ECU	54.4%	56.4%	54.4%	54.3%	56.8%	59.1%	60.9%	59.2%	59.1%	61.5%
ECSU	49.1%	49.3%	50.7%	42.8%	45.8%	52.4%	52.5%	53.4%	46.1%	47.9%
FSU	42.2%	37.0%	35.6%	38.0%	31.5%	44.9%	41.1%	38.7%	41.1%	34.8%
NCA&T	39.5%	38.0%	41.4%	37.7%	37.2%	42.1%	39.8%	42.9%	39.7%	39.3%
NCCU	44.9%	49.3%	48.3%	47.9%	44.4%	47.8%	52.8%	50.9%	50.7%	46.5%
NCSU	70.5%	70.3%	69.6%	71.5%	73.2%	75.3%	75.0%	73.5%	76.0%	78.0%
UNCA	53.1%	53.3%	53.6%	59.6%	58.7%	62.7%	62.2%	61.9%	67.6%	68.5%
UNC-CH	83.8%	83.8%	82.6%	86.1%	84.9%	86.2%	86.0%	84.7%	87.6%	86.3%
UNCC	48.7%	49.8%	50.5%	50.6%	53.9%	54.3%	55.2%	56.1%	56.3%	59.2%
UNCG	51.1%	52.0%	49.8%	52.5%	51.6%	58.3%	59.4%	56.5%	59.5%	58.4%
UNCP	34.9%	37.6%	34.0%	33.4%	34.1%	41.1%	41.8%	40.3%	39.7%	40.4%
UNCW	63.5%	65.1%	64.8%	67.1%	68.5%	70.2%	71.9%	71.6%	74.1%	76.6%
UNCSA	57.0%	54.2%	51.4%	55.6%	61.2%	60.6%	58.8%	54.1%	57.0%	63.6%
WCU	47.3%	46.7%	47.4%	49.5%	48.8%	54.4%	54.7%	55.4%	54.7%	54.6%
WSSU	47.9%	44.1%	45.1%	39.3%	36.5%	51.5%	47.3%	48.5%	41.8%	39.0%
UNC Total	59.1%	59.3%	58.7%	58.8%	58.8%	64.0%	64.2%	63.4%	63.5%	63.4%

Source: Persist.ER001

## 2.2D. SIX-YEAR STUDENT SUCCESS MEASURES FROM THE VOLUNTARY SYSTEM OF ACCOUNTABILITY

UNC campuses are all members of the Voluntary System of Accountability, which was developed by a consortium of national organizations to standardize reporting of key educational data. VSA is another part of our providing context and perspectives on the traditional measures of retention and graduation. VSA tracks the same cohort as the US Department of Education standard, first-time full-time freshmen, and then measures whether they have graduated in six years or are still enrolled. However, their measure of student success includes all universities, public or private, inside or outside the state.

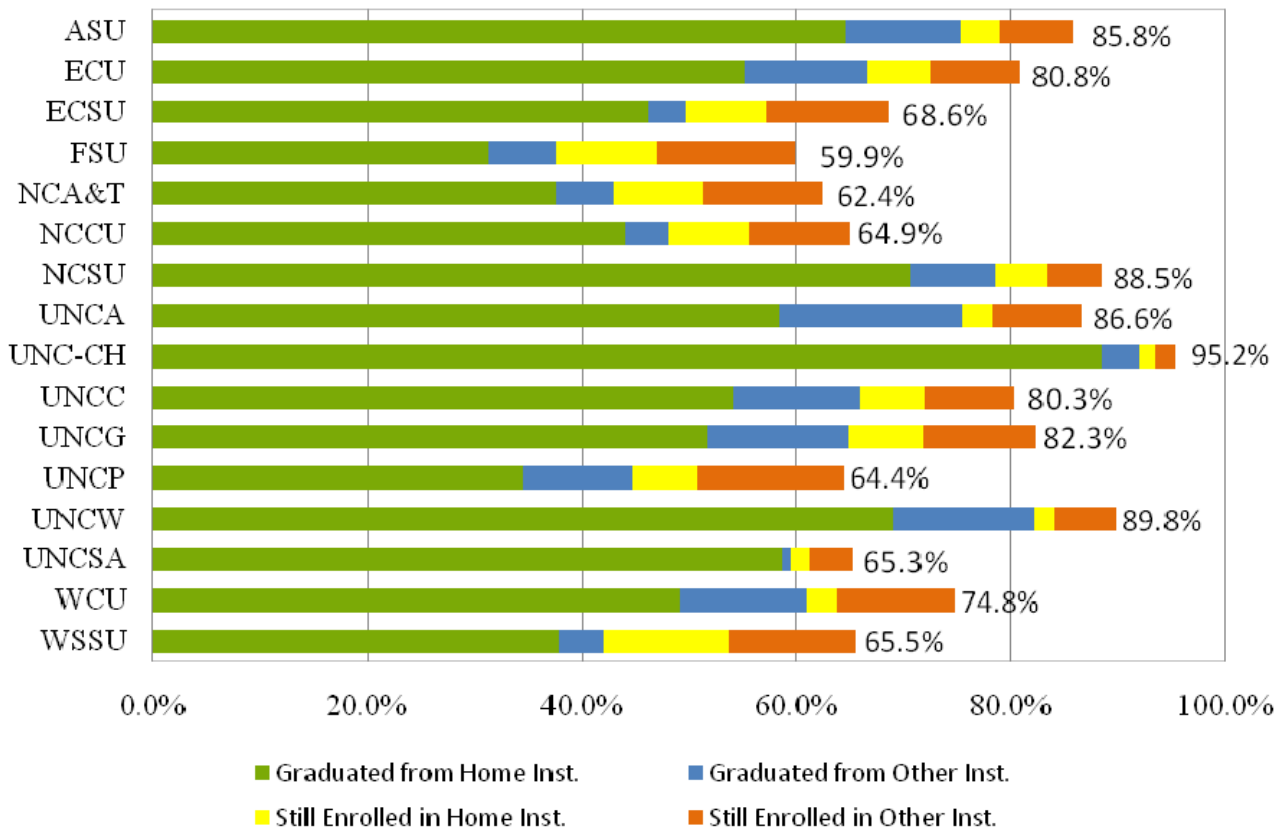
These various approaches were illustrated in Section 2.1 using Appalachian State University. Here, let's follow the data on UNC Greensboro. According to the VSA data,

UNCG has a six-year graduation rate of 51.6% by the traditional measure. But 13.2% of UNCG's freshman cohort graduate from another university within six years. So UNCG has an "at any university" graduation rate of 64.8%. VSA also tracks whether a student is still enrolled at the six-year point. Of UNCG's original freshman cohort, 17.5% are still enrolled at UNCG or another college or university. These numbers together (graduated and still enrolled) constitute the VSA measure for student success, which for UNCG is 82.3%. This certainly paints a different picture from the standard within-the-institution measure. VSA provides a fuller picture of what happens to students who leave one of our universities and gives a different perspective on "drop-outs."

TABLE 2.2D. UNC UNDERGRADUATE SIX-YEAR SUCCESS AND PROGRESS RATE, FIRST-TIME FULL-TIME STUDENTS WHO FIRST ENROLLED IN FALL 2003

Institution	Graduated from Home Institution	Graduated from Other Institution		Still Enrolled in Home Institution	Still Enrolled in Other Institution	Total Rate
		With 4-Yr Degree	With 2-Yr Degree			
ASU	64.6%	9.5%	1.2%	3.7%	6.8%	85.8%
ECU	55.2%	9.1%	2.3%	5.9%	8.3%	80.8%
ECSU	46.2%	1.8%	1.6%	7.6%	11.4%	68.6%
FSU	31.3%	5.3%	0.9%	9.5%	12.9%	59.9%
NCA&T	37.5%	4.2%	1.3%	8.3%	11.1%	62.4%
NCCU	44.1%	3.7%	0.3%	7.5%	9.3%	64.9%
NCSU	70.7%	7.1%	0.7%	4.8%	5.2%	88.5%
UNCA	58.5%	14.3%	2.6%	2.9%	8.3%	86.6%
UNC-CH	88.4%	3.3%	0.3%	1.5%	1.7%	95.2%
UNCC	54.1%	9.3%	2.5%	6.0%	8.4%	80.3%
UNCG	51.6%	10.4%	2.8%	6.9%	10.6%	82.3%
UNCP	34.5%	8.2%	2.0%	6.0%	13.7%	64.4%
UNCW	69.0%	11.8%	1.4%	1.8%	5.8%	89.8%
UNCSA	58.7%	0.8%	0.0%	1.7%	4.1%	65.3%
WCU	49.1%	9.3%	2.5%	2.9%	11.0%	74.8%
WSSU	37.8%	3.5%	0.7%	11.7%	11.8%	65.5%

FIGURE 2.2D. UNC UNDERGRADUATE SIX-YEAR SUCCESS AND PROGRESS RATE, FIRST-TIME FULL-TIME STUDENTS WHO FIRST ENROLLED IN FALL 2003



### 2.3. UNDERGRADUATE ENROLLMENT BY STUDENT CLASSIFICATION LEVEL AND SIX-YEAR GRADUATION RATES

The following data on total undergraduate enrollment and the six-year graduation rates based on it provide another way to set the context and provide additional perspective on graduation. This approach has the advantage of focusing on who is enrolled in the university in a given year without paying attention to how they entered. This allows everyone who is enrolled, rather than just a freshman cohort, to be tracked for graduation. The basic idea is to take a snapshot

of the undergraduate enrollment in a given year and ask how many of the enrolled students graduate. That question can be further refined to: How many graduate by the clock within six years of enrolling? While this approach addresses all students, students will have a different six-year time frame. By this measure, a freshman will have five more years; someone who has been enrolled for four years will have two more years.

#### 2.3A. ENROLLMENT BY STUDENT CLASSIFICATION LEVEL

This measure provides a snapshot of the classification of students by class level in the years included. The key number is how many undergraduates are enrolled in a given year. The classification is not so important as the total number of students, but it does show the composition of the undergraduate student body. Nine years of enrollment are reproduced here. It is necessary to go back

several years so that all those in a snapshot cohort will have a full six-year period in which to graduate.

TABLE 2.3A. ALL UNDERGRADUATE ENROLLMENT BY CLASS YEAR

Year	Class	UNC Total	ASU	ECU	ECSU	FSU	NCA&T	NCCU	NCSU	UNCA	UNC-CH	UNCC	UNCG	UNCP	UNCW	UNCSA	WCU	WSSU
Fall 2000	1. Freshmen	34,889	3,558	4,540	653	1,296	2,593	1,073	4,971	743	3,470	3,512	2,928	887	1,934	224	1,716	791
	2. Sophomores	28,416	2,787	3,343	412	712	1,450	873	4,563	619	3,499	3,009	2,271	586	2,296	162	1,200	634
	3. Juniors	27,602	2,454	3,051	344	512	1,294	843	4,529	674	3,946	3,203	2,120	653	2,161	137	1,084	597
	4. Seniors	32,012	2,781	4,022	450	857	1,391	1,069	5,444	773	4,220	3,249	2,564	660	2,285	146	1,465	636
	5. Fifth-Yrs	699							17			490			192			
All Undergrads	123,618	11,580	14,956	1,859	3,377	6,728	3,858	19,524	2,809	15,135	13,463	9,883	2,786	8,868	669	5,465	2,658	
Fall 2001	1. Freshmen	36,456	3,373	4,633	623	1,491	2,830	1,129	5,059	674	3,734	3,582	3,074	1,101	2,244	250	1,685	974
	2. Sophomores	29,713	3,004	3,592	455	676	1,633	1,016	4,496	685	3,565	3,271	2,440	685	2,273	169	1,185	568
	3. Juniors	28,997	2,705	3,057	357	732	1,388	862	4,684	709	3,902	3,309	2,283	667	2,363	138	1,205	636
	4. Seniors	32,518	2,849	4,114	431	888	1,394	1,070	5,579	806	4,211	3,394	2,427	690	2,408	130	1,482	645
	5. Fifth-Yrs	749							21		549				179			
All Undergrads	128,433	11,931	15,396	1,866	3,787	7,245	4,077	19,839	2,874	15,412	14,105	10,224	3,143	9,467	687	5,557	2,823	
Fall 2002	1. Freshmen	37,170	3,292	5,099	716	1,577	3,091	1,224	4,964	659	3,494	3,671	3,101	1,226	1,929	266	1,673	1,188
	2. Sophomores	30,681	2,881	3,548	421	750	1,781	1,191	4,524	668	3,840	3,292	2,337	801	2,439	175	1,247	786
	3. Juniors	30,189	2,957	3,344	462	688	1,494	926	4,738	759	3,858	3,446	2,419	793	2,384	139	1,155	627
	4. Seniors	34,480	3,108	4,150	416	1,139	1,513	1,128	5,908	877	4,277	3,612	2,846	699	2,590	141	1,506	570
	5. Fifth-Yrs	724							12		540				166			6
All Undergrads	133,244	12,238	16,141	2,015	4,154	7,879	4,469	20,146	2,963	15,469	14,561	10,703	3,519	9,508	721	5,581	3,177	
Fall 2003	1. Freshmen	38,821	3,269	5,023	751	1,596	3,663	1,419	4,993	774	3,559	3,828	3,029	1,336	2,030	233	1,921	1,397
	2. Sophomores	31,309	2,945	3,802	473	812	1,767	1,274	4,453	648	3,676	3,315	2,597	867	2,425	194	1,251	810
	3. Juniors	31,403	2,860	3,502	373	717	1,562	1,005	4,848	735	4,235	3,676	2,340	815	2,480	140	1,268	847
	4. Seniors	35,902	3,311	4,508	499	1,097	1,654	1,180	5,996	924	4,241	3,676	3,010	796	2,625	134	1,546	705
	5. Fifth-Yrs	738			3				24		563				148			
All Undergrads	138,173	12,385	16,835	2,099	4,222	8,646	4,878	20,314	3,081	15,711	15,058	10,976	3,814	9,708	701	5,986	3,759	
Fall 2004	1. Freshmen	39,956	3,312	5,024	870	1,427	3,791	1,537	4,947	933	3,627	3,897	3,244	1,294	2,129	208	2,111	1,605
	2. Sophomores	32,555	2,912	3,966	527	870	1,819	1,437	4,537	686	3,772	3,392	2,671	897	2,470	176	1,397	1,026
	3. Juniors	32,508	2,942	3,731	443	838	1,617	1,194	4,673	708	4,112	3,763	2,399	985	2,637	165	1,378	923
	4. Seniors	37,565	3,390	4,685	445	1,193	1,842	1,271	6,122	905	4,554	3,876	3,032	766	2,753	133	1,764	834
	5. Fifth-Yrs	708							23		544				141			
All Undergrads	143,292	12,556	17,406	2,285	4,328	9,069	5,439	20,302	3,232	16,065	15,472	11,346	3,942	10,130	682	6,650	4,388	
Fall 2005	1. Freshmen	41,845	3,374	4,646	891	1,678	3,996	1,722	5,389	718	3,794	4,185	3,534	1,497	2,206	239	2,119	1,857
	2. Sophomores	33,610	2,996	3,947	537	871	2,068	1,532	4,365	752	3,882	3,699	2,745	968	2,474	159	1,473	1,142
	3. Juniors	33,954	2,885	3,926	490	799	1,601	1,293	4,854	769	4,132	3,990	2,682	1,065	2,652	158	1,540	1,118
	4. Seniors	38,871	3,364	5,074	495	1,589	1,984	1,280	5,913	885	4,470	3,857	3,211	896	2,920	165	1,757	1,011
	5. Fifth-Yrs	654							25		494			28	107			
All Undergrads	148,934	12,619	17,593	2,413	4,937	9,649	5,827	20,546	3,124	16,278	16,225	12,172	4,454	10,359	721	6,889	5,128	
Fall 2006	1. Freshmen	43,204	3,624	5,246	803	1,599	3,994	1,513	5,860	784	3,847	4,294	3,574	1,581	2,249	241	2,168	1,827
	2. Sophomores	34,788	3,126	3,826	591	1,095	2,021	1,401	4,748	703	4,054	3,796	2,952	963	2,601	180	1,528	1,203
	3. Juniors	35,006	2,988	4,050	486	1,064	1,625	1,372	4,696	839	4,333	4,200	2,812	1,129	2,691	146	1,520	1,055
	4. Seniors	39,966	3,376	5,323	581	1,483	1,904	1,324	6,118	894	4,472	4,166	3,419	1,037	2,995	149	1,556	1,169
	5. Fifth-Yrs	837							16		429			99	113			
All Undergrads	153,801	13,114	18,445	2,461	5,241	9,544	5,610	21,438	3,220	16,706	16,885	12,757	4,710	10,649	716	7,051	5,254	
Fall 2007	1. Freshmen	44,269	3,693	5,826	1,019	1,685	3,124	2,056	6,076	773	3,933	4,425	3,873	1,781	2,258	237	1,794	1,716
	2. Sophomores	35,319	3,241	4,141	580	1,114	2,004	1,202	5,026	698	4,095	3,767	2,886	969	2,646	192	1,509	1,249
	3. Juniors	36,402	3,215	4,251	520	1,163	1,811	1,298	5,021	780	4,414	4,312	2,886	1,103	2,693	163	1,650	1,122
	4. Seniors	41,502	3,614	5,433	614	1,716	1,934	1,208	5,925	998	4,696	4,455	3,620	1,050	3,036	147	1,720	1,336
	5. Fifth-Yrs	1,052			2				22		522			99	74			
All Undergrads	158,544	13,763	19,651	2,735	5,678	8,873	5,764	22,070	3,249	17,138	17,481	13,265	5,002	10,707	739	7,006	5,423	
Fall 2008	1. Freshmen	44,264	3,704	6,269	1,093	1,239	2,709	1,808	5,975	801	4,024	4,725	3,676	1,809	2,335	232	1,814	2,051
	2. Sophomores	35,934	3,468	4,327	638	1,046	1,895	1,257	5,311	649	4,202	3,887	2,955	1,069	2,537	188	1,313	1,192
	3. Juniors	37,363	3,371	4,410	476	1,144	1,789	1,225	5,332	781	4,284	4,532	3,162	1,161	2,776	168	1,614	1,138
	4. Seniors	43,527	3,830	5,711	624	1,750	2,239	1,207	6,204	919	4,912	4,482	3,773	1,166	3,141	166	1,836	1,567
	5. Fifth-Yrs	1,113			13				17		590			75	99			
All Undergrads	162,201	14,373	20,717	2,844	5,179	8,632	5,497	22,839	3,150	17,422	18,216	13,566	5,280	10,888	754	6,896	5,948	

Source: Peers:GR017.G

### 2.3B. ALL UNDERGRADUATE GRADUATION RATES

This measure provides the percentage of students who have graduated. Only the cohorts through 2003 will have had a full six years to afford everyone an opportunity to graduate within six years. So only the first four years, 2000 through 2003, are to be considered at this point. In Table 2.3B, the line to pay attention to is "All Undergrads," for the campuses and for UNC. Based on all undergraduates enrolled in a given year, the table shows how many students graduated within six years, understood as freshmen having six years, sophomores five years, juniors four years, seniors three years, and two years for those in the fifth year or more. Of the entire undergraduate population in, say 2001, 75.9% graduated within six years by this measure. Many would have graduated in fewer than six years, but this is a way of answering the question, Of all those enrolled at this point, how many graduated within six years as measured by the clock? One can look at the same line for each campus and see how each is doing on this measure.

This can be contrasted with the traditional measure of six-year graduation, which measures only freshmen who were enrolled full-time and, as you will remember, that percentage for UNC was 58.8%. In any one iteration, the traditional measure will represent only about 18-20% of the undergraduate student population, while this total undergraduate student measure includes all undergraduates.

The rate by each class level simply records for that cohort at that level how many graduate in six-years. Naturally the rate goes up as one moves up the class levels. The overall rate takes all levels into account and provides an overall rate for those enrolled at all levels.

This again is another way to look at the data to provide context and perspective on the traditional measures we use.

TABLE 2.3B. TOTAL UNDERGRADUATE STUDENT POPULATION, GRADUATION RATE\*

Year	Class	UNC Total	ASU	ECU	ECSU	FSU	NCA&T	NCCU	NCSU	UNCA	UNC-CH	UNCC	UNCG	UNCP	UNCW	UNCSA	WCU	WSSU
Fall 2000	1. Freshmen	61.8%	67.6%	61.7%	50.8%	45.5%	40.8%	49.3%	71.6%	62.5%	86.0%	54.0%	59.1%	40.6%	71.6%	54.5%	55.4%	48.0%
	2. Sophomores	74.4%	79.6%	74.3%	68.2%	63.3%	58.9%	60.8%	76.7%	73.0%	88.7%	66.4%	72.1%	65.5%	78.9%	75.3%	76.2%	61.0%
	3. Juniors	82.0%	85.7%	83.7%	77.9%	75.6%	69.6%	74.5%	85.2%	78.9%	90.1%	72.6%	79.1%	78.7%	85.9%	78.8%	85.2%	74.4%
	4. Seniors	88.8%	91.7%	90.4%	90.7%	83.4%	76.9%	81.5%	89.7%	85.0%	93.6%	85.5%	84.7%	91.5%	93.7%	84.3%	89.8%	85.7%
	5. Fifth-Yrs	43.9%							100.0%			44.9%			36.5%			
Fall 2001	All Undergrads	76.1%	80.1%	76.7%	69.3%	63.5%	57.7%	66.3%	81.0%	74.9%	89.8%	68.5%	73.0%	66.8%	81.9%	71.0%	75.1%	66.1%
	1. Freshmen	61.0%	67.8%	59.5%	47.8%	43.5%	41.0%	47.6%	71.0%	61.9%	85.0%	55.1%	57.1%	41.7%	72.3%	50.0%	57.5%	46.9%
	2. Sophomores	74.3%	80.9%	73.9%	69.2%	61.8%	55.2%	60.0%	78.7%	76.2%	87.6%	65.6%	72.8%	65.6%	80.9%	66.3%	75.0%	63.6%
	3. Juniors	82.2%	85.5%	83.0%	79.0%	72.0%	69.4%	74.4%	85.6%	80.3%	91.4%	74.8%	80.0%	76.8%	85.7%	86.2%	83.5%	71.9%
	4. Seniors	89.0%	92.4%	88.9%	85.4%	83.6%	76.3%	78.6%	90.3%	88.0%	94.8%	86.2%	86.9%	91.6%	93.0%	81.5%	90.1%	85.6%
Fall 2002	5. Fifth-Yrs	45.3%						90.5%			46.5%				36.3%			
	All Undergrads	75.9%	81.0%	75.4%	67.7%	61.7%	56.4%	64.5%	81.6%	77.1%	89.9%	69.3%	73.0%	65.3%	82.3%	67.3%	75.6%	64.7%
	1. Freshmen	60.7%	70.1%	59.3%	45.8%	43.5%	40.6%	47.0%	71.3%	64.6%	88.0%	55.3%	59.1%	40.9%	72.8%	50.4%	55.7%	43.7%
	2. Sophomores	73.5%	79.2%	74.4%	60.6%	62.7%	55.4%	57.8%	79.0%	72.5%	86.8%	65.9%	71.3%	61.8%	81.3%	66.3%	74.4%	62.3%
	3. Juniors	81.6%	87.2%	82.1%	79.4%	69.5%	63.0%	72.7%	86.6%	80.8%	91.0%	74.1%	78.8%	76.2%	86.4%	81.3%	83.6%	66.0%
Fall 2003	4. Seniors	88.8%	91.8%	89.3%	89.7%	83.7%	77.5%	73.4%	90.2%	87.6%	95.7%	86.9%	85.5%	90.0%	93.0%	86.5%	88.8%	85.8%
	5. Fifth-Yrs	39.9%							100.0%		41.5%				31.9%			
	All Undergrads	75.6%	81.9%	75.0%	65.7%	62.3%	55.3%	61.9%	82.2%	77.3%	90.6%	69.5%	73.2%	63.3%	83.2%	67.3%	74.6%	60.2%
	1. Freshmen	58.4%	67.5%	58.9%	43.4%	37.7%	38.1%	42.2%	71.1%	66.3%	85.8%	54.5%	56.6%	38.3%	73.7%	55.4%	54.4%	36.1%
	2. Sophomores	73.7%	80.1%	73.8%	66.2%	59.5%	56.8%	57.8%	79.3%	74.9%	89.4%	66.4%	70.4%	61.0%	81.2%	66.5%	75.7%	58.8%
Fall 2004	3. Juniors	81.1%	86.6%	80.9%	74.8%	73.2%	66.1%	72.9%	86.2%	78.6%	88.8%	74.7%	79.1%	72.5%	86.0%	78.6%	82.6%	69.2%
	4. Seniors	88.3%	93.0%	87.8%	89.6%	82.4%	73.3%	75.7%	90.6%	86.9%	94.1%	87.1%	84.3%	87.8%	94.3%	88.8%	89.1%	78.4%
	5. Fifth-Yrs	42.1%							83.3%		42.5%				35.1%			
	All Undergrads	74.7%	81.7%	74.6%	65.0%	59.6%	53.7%	60.7%	82.3%	77.2%	89.7%	69.5%	72.3%	61.1%	83.7%	69.5%	73.8%	56.4%
	1. Freshmen	53.7%	64.1%	53.6%	35.2%	29.5%	36.2%	31.4%	65.3%	57.2%	86.1%	50.5%	50.8%	33.9%	68.5%	50.5%	50.5%	30.0%
Fall 2005	2. Sophomores	71.2%	77.5%	71.1%	62.8%	50.6%	53.9%	53.4%	78.5%	76.7%	86.9%	67.0%	68.5%	58.5%	79.4%	70.5%	71.3%	50.3%
	3. Juniors	80.5%	85.3%	80.9%	75.4%	70.6%	65.5%	68.8%	86.6%	80.5%	89.8%	75.2%	79.0%	69.6%	86.1%	79.4%	79.3%	65.6%
	4. Seniors	87.7%	92.4%	88.3%	89.2%	82.1%	74.4%	75.2%	91.0%	87.9%	91.3%	86.4%	82.7%	86.7%	93.5%	83.5%	87.8%	81.7%
	5. Fifth-Yrs	46.1%							91.3%		44.7%				44.0%			
	All Undergrads	74.7%	79.8%	72.8%	59.9%	56.2%	52.7%	55.7%	80.9%	75.0%	88.7%	68.9%	69.5%	58.7%	82.2%	69.1%	70.7%	52.1%
Fall 2006	1. Freshmen	36.2%	42.7%	36.4%	20.7%	20.9%	22.9%	15.4%	41.8%	40.8%	75.5%	30.5%	31.4%	17.8%	46.0%	54.0%	34.2%	19.7%
	2. Sophomores	66.6%	74.7%	67.8%	54.4%	32.7%	50.2%	44.0%	73.9%	72.9%	87.4%	62.3%	63.0%	49.9%	77.4%	67.9%	67.4%	43.3%
	3. Juniors	78.1%	84.1%	77.1%	74.1%	50.9%	62.2%	67.1%	85.4%	81.4%	88.1%	73.9%	77.4%	66.3%	84.7%	81.0%	78.6%	61.5%
	4. Seniors	87.4%	92.2%	87.8%	88.9%	76.4%	74.6%	76.8%	90.9%	85.9%	93.0%	86.9%	84.5%	84.3%	93.9%	78.2%	86.2%	78.4%
	5. Fifth-Yrs	48.2%							96.0%		47.4%				33.6%			
Fall 2007	All Undergrads	66.0%	73.0%	67.4%	53.0%	45.7%	45.9%	47.9%	73.1%	71.3%	86.3%	62.3%	62.7%	50.1%	76.8%	68.5%	64.5%	45.6%
	1. Freshmen	4.5%	5.1%	5.2%	2.7%	3.0%	8.2%	1.7%	3.8%	4.5%	2.0%	4.9%	5.1%	4.7%	2.7%	3.3%	5.5%	4.5%
	2. Sophomores	48.7%	54.5%	46.6%	30.8%	24.8%	38.7%	23.7%	50.6%	48.9%	76.1%	42.2%	44.3%	34.0%	57.8%	68.9%	52.5%	33.8%
	3. Juniors	73.6%	79.7%	71.8%	66.9%	52.0%	61.9%	59.6%	80.0%	75.6%	87.5%	69.4%	70.8%	56.7%	81.0%	77.4%	75.9%	57.3%
	4. Seniors	86.0%	91.3%	85.2%	85.4%	71.1%	72.2%	79.7%	89.7%	88.0%	92.1%	86.2%	83.0%	84.3%	92.4%	85.2%	85.1%	71.8%
Fall 2008	5. Fifth-Yrs	57.0%							100.0%		46.9%				40.7%			
	All Undergrads	51.7%	56.1%	51.5%	41.7%	36.8%	36.6%	39.8%	55.4%	55.9%	66.3%	50.4%	49.5%	40.7%	61.6%	52.0%	51.2%	36.8%
	1. Freshmen	0.4%	0.1%	0.3%	1.3%	0.1%	0.1%	0.4%	0.1%	0.1%	0.4%	0.4%	0.5%	0.2%	0.1%	1.3%	1.1%	2.4%
	2. Sophomores	6.1%	6.6%	6.4%	2.9%	3.6%	6.5%	4.4%	4.3%	6.3%	2.7%	6.6%	8.5%	8.4%	6.6%	3.1%	8.9%	12.7%
	3. Juniors	53.4%	56.3%	47.7%	38.9%	28.6%	48.2%	44.0%	55.2%	49.6%	76.0%	46.8%	50.7%	38.5%	62.3%	79.1%	57.4%	41.5%
Fall 2009	4. Seniors	82.2%	86.9%	80.1%	79.2%	62.1%	72.5%	75.2%	85.7%	85.1%	92.1%	83.1%	77.5%	78.0%	90.0%	79.6%	83.4%	65.5%
	5. Fifth-Yrs	53.3%							90.9%		39.9%			33.3%	50.0%			
	All Undergrads	35.6%	37.5%	33.9%	26.3%	25.3%	27.2%	26.7%	36.7%	39.4%	45.5%	35.4%	34.2%	27.2%	43.2%	34.5%	39.9%	28.4%
	1. Freshmen	0.1%	0.0%	0.1%	0.1%	0.2%	0.0%	0.1%	0.1%	0.2%	0.1%	0.2%	0.0%	0.2%	0.1%	0.1%	0.2%	0.2%
	2. Sophomores	0.1%	0.1%	0.1%	0.5%	0.3%	0.3%	0.3%	0.3%	0.2%	0.1%	0.3%	0.2%	0.2%	0.2%	1.1%	0.2%	1.0%
Fall 2010	3. Juniors	4.4%	4.9%	3.6%	1.1%	2.0%	2.2%	6.1%	3.7%	5.6%	3.3%	5.6%	4.8%	5.6%	2.9%	2.4%	6.7%	10.0%
	4. Seniors	61.9%	65.6%	57.1%	55.1%	39.2%	55.8%	54.0%	63.9%	60.2%	78.7%	61.6%	56.8%	55.0%	70.5%	80.7%	61.7%	54.2%
	5. Fifth-Yrs	35.9%							94.1%		22.2%			25.3%	23.2%			
	All Undergrads	17.9%	18.7%	16.6%	12.6%	13.7%	14.9%	13.3%	18.3%	19.0%	23.0%	17.4%	17.0%	13.8%	21.3%	18.6%	21.0%	16.4%

\* The graduation rate is six-year for freshmen, five-year for sophomores, four-year for juniors, three-year for seniors, and two-year for those in fifth year or more.

### 2.3C. BACHELOR'S DEGREES PER 100 FTE UNDERGRADUATES

This measure looks at traditional graduation rates compared to the average graduation rates of designated peers approved by the UNC Board of Governors. It also looks at the number of baccalaureate degrees awarded per

100 undergraduates enrolled. Both of these measures are new comparisons and we will need to take time to explore their significance and how they can be effectively used in our target setting

**TABLE 2.3C. BACHELOR'S DEGREES PER 100 FTE UNDERGRADUATES, UNC INSTITUTIONS VS. SELECTED PUBLIC PEERS**

Institution		2004-05	2005-06	2006-07	2007-08	2008-09
ASU	UNC Rate	21.4	20.1	18.8	19.9	20.8
	Public Peer Average	20.6	20.9	20.9	21.1	21.5
	Difference	0.8	-0.8	-2.1	-1.2	-0.7
ECU	UNC Rate	18.9	19.9	20.2	19.9	19.9
	Public Peer Average	19.4	19.8	19.9	19.6	19.6
	Difference	-0.4	0.2	0.3	0.3	0.3
ECSU	UNC Rate	13.8	14.7	14.8	15.5	14.9
	Public Peer Average	17.2	16.9	17.3	16.4	16.6
	Difference	-3.3	-2.2	-2.4	-0.9	-1.7
FSU	UNC Rate	17.3	16.8	15.4	16.5	16.0
	Public Peer Average	19.2	18.3	18.6	18.3	18.2
	Difference	-1.9	-1.6	-3.2	-1.8	-2.2
NCA&T	UNC Rate	12.6	11.1	14.6	12.6	14.6
	Public Peer Average	17.1	17.3	17.8	18.0	18.2
	Difference	-4.5	-6.2	-3.2	-5.5	-3.6
NCCU	UNC Rate	15.9	14.5	14.9	15.5	14.1
	Public Peer Average	20.9	21.2	20.9	21.5	21.2
	Difference	-4.9	-6.8	-6.0	-6.0	-7.0
NCSU	UNC Rate	21.8	20.5	21.3	20.6	20.6
	Public Peer Average	22.6	22.1	21.8	22.0	22.1
	Difference	-0.8	-1.6	-0.6	-1.3	-1.5
UNCA	UNC Rate	19.6	18.6	18.9	22.6	19.1
	Public Peer Average	22.1	21.8	21.4	21.9	21.5
	Difference	-2.6	-3.2	-2.5	0.7	-2.4
UNC-CH	UNC Rate	24.2	23.1	23.0	24.7	24.9
	Public Peer Average	23.6	23.1	22.7	23.2	23.5
	Difference	0.6	0.0	0.3	1.5	1.3
UNCC	UNC Rate	21.0	21.1	21.7	22.8	22.4
	Public Peer Average	20.8	21.1	21.0	20.6	20.8
	Difference	0.2	0.0	0.7	2.1	1.6
UNCG	UNC Rate	19.8	20.2	20.4	21.0	20.3
	Public Peer Average	21.2	21.1	21.0	21.0	21.0
	Difference	-1.4	-0.9	-0.6	0.0	-0.7
UNCP	UNC Rate	17.4	16.8	17.3	16.3	16.5
	Public Peer Average	19.0	18.8	19.2	19.3	19.5
	Difference	-1.6	-2.0	-1.9	-3.0	-3.0
UNCW	UNC Rate	23.1	23.2	22.7	24.1	23.7
	Public Peer Average	21.7	22.0	21.8	21.9	21.9
	Difference	1.4	1.2	0.9	2.2	1.9
WCU	UNC Rate	21.2	22.1	20.5	24.0	23.7
	Public Peer Average	20.7	20.5	20.8	20.5	20.5
	Difference	0.5	1.5	-0.3	3.5	3.2
WSSU	UNC Rate	16.2	19.7	18.1	19.1	20.3
	Public Peer Average	18.3	18.2	18.4	18.4	18.2
	Difference	-2.2	1.5	-0.3	0.7	2.1

Source: IPEDS data, Peers.GR017a

---

### 2.3D. AVERAGE REGISTERED SEMESTERS

The official measure of graduation rates depends simply on the passage of time. In some people's minds, a six-year graduation rate may suggest that it took the full six-years for a student to graduate. However, this six-year rate also captures those who may not have been enrolled in all semesters during the six-year period. These data try to differentiate the six-year graduation rate by the number of semesters the student was actually enrolled. The data suggest that some students who take the full six years to graduate don't enroll for some of the intervening terms.

These data also show that in reporting the six-year clock-time graduation rate, only a small percent of the students actually took six clock-years to graduate. [Table 2.3D\(1\)](#) displays by campus the average number of terms registered by graduates in the six-year period who started as first-time full-time freshmen in 2001, 2002, or 2003. These three cohorts together constitute 50,811 students.

For them, excluding summer terms, the average number of semesters enrolled was 8.62, which is approximately four and a third years of actually being enrolled in this six-year period. We have sub-periods within the six-year clock period. Some graduate in four-years or less, some take between four and five years, and some take between five and six years. We have tried to capture the registered terms for these different groups. For example, those who graduated in four or fewer years were enrolled an average of 7.91 semesters. Those who took the longest clock time to graduate, greater than five but less than or equal to six years, were enrolled an average of 10.5 semesters. It is interesting to note that of the 50,811 graduates counted in the six-year graduation numbers, only 4,500 took more than five or less than or equal to six years to graduate, or only 8.9% of those included in the six-year graduation measure.

TABLE 2.3D(1). AVERAGE REGISTERED SEMESTERS FOR UNC FIRST-TIME FULL-TIME FRESHMEN WHO GRADUATED WITHIN SIX YEARS, FALL 2001 – FALL 2003

Institution	2001		2002		2003		2001 through 2003 Combined	
	# of Grads Registered	# of Regular Semesters Registered	# of Grads Registered	# of Regular Semesters Registered	# of Grads Registered	# of Regular Semesters Registered	# of Grads Registered	# of Regular Semesters Registered
ASU	1,604	8.6	1,728	8.6	1,742	8.6	5,074	8.6
ECU	1,884	8.8	2,102	8.7	2,121	8.7	6,107	8.7
ECSU	194	8.8	211	8.8	220	8.9	625	8.8
FSU	295	8.9	301	8.8	276	9.1	872	9.0
NCA&T	753	8.9	803	8.9	871	8.9	2,427	8.9
NCCU	389	8.9	415	8.9	475	9.1	1,279	9.0
NCSU	2,796	8.8	2,745	8.8	2,992	8.7	8,533	8.8
UNCA	276	8.8	286	8.9	406	9.0	968	8.9
UNC-CH	3,118	8.1	3,029	8.1	3,031	8.0	9,178	8.1
UNCC	1,297	8.7	1,339	8.8	1,459	8.8	4,095	8.8
UNCG	1,073	8.7	1,233	8.7	1,191	8.7	3,497	8.7
UNCP	277	9.1	280	9.1	321	8.9	878	9.0
UNCW	1,422	8.4	1,210	8.4	1,354	8.4	3,986	8.4
UNCSA	80	8.0	81	8.0	77	8.0	238	8.0
WCU	651	8.8	667	8.6	816	8.7	2,134	8.7
WSSU	297	8.9	279	9.0	344	9.3	920	9.1
UNCTotal	16,406	8.6	16,709	8.6	17,696	8.6	50,811	8.6

Source: SDF.GR256D.G

FIGURE 2.3D(1). AVERAGE REGISTERED SEMESTERS FOR UNC FIRST-TIME FULL-TIME FRESHMEN WHO GRADUATED WITHIN SIX YEARS (2001 THROUGH 2003 COHORTS COMBINED)

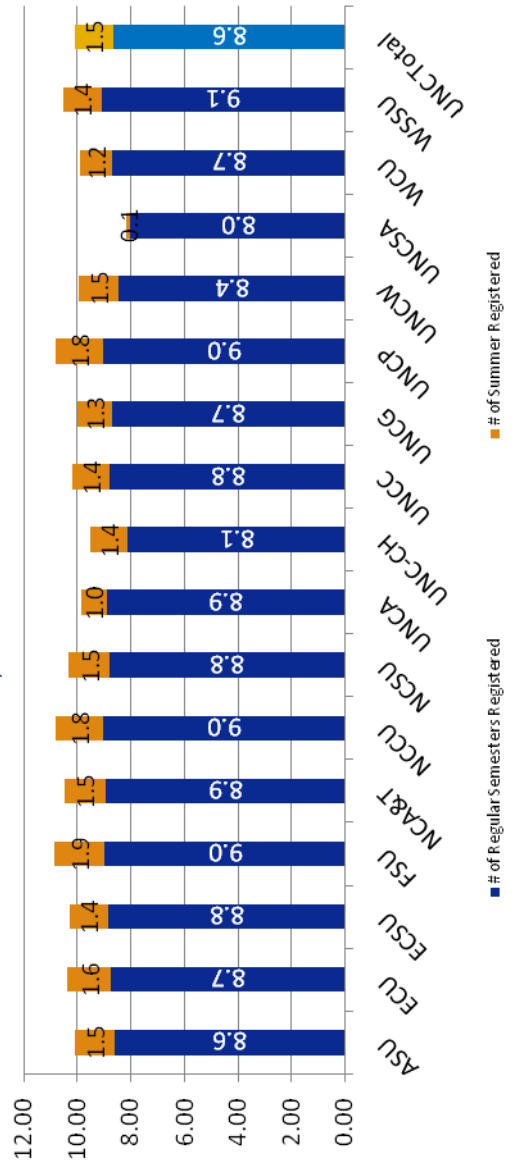
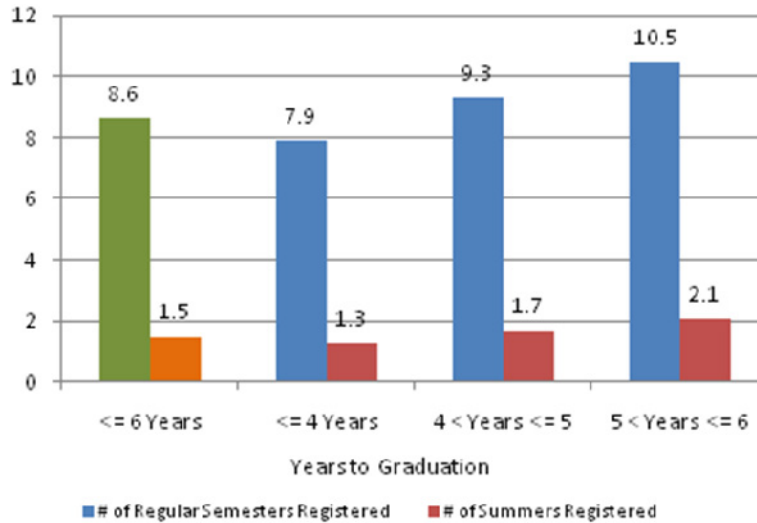


TABLE 2.3D(2). AVERAGE REGISTERED SEMESTERS FOR UNC FIRST-TIME FULL-TIME FRESHMEN WHO GRADUATED WITHIN SIX YEARS (FALL 2001 THROUGH FALL 2003 COHORTS COMBINED)

Years to Graduation	# of Grads	# of Regular Semesters Registered	# of Summers Registered
<= 6 Years	50,811	8.6	1.5
<= 4 Years	29,184	7.9	1.3
4 < Years <= 5	17,127	9.3	1.7
5 < Years <= 6	4,500	10.5	2.1

FIGURE 2.3D(2). AVERAGE REGISTERED SEMESTERS FOR UNC FIRST-TIME FULL-TIME FRESHMEN WHO GRADUATED WITHIN SIX YEARS (FALL 2001 THROUGH FALL 2003 COHORTS COMBINED)



### III. DEGREE PRODUCTION

While it is important to focus on access and the steps that lead to student success, the goal of the University is to turn out graduates equipped to be successful in a global society. We must graduate individuals equipped to play a role in the complex society and economy we live in, but it is also important to meet the need in specific areas. In 2008-09, UNC campuses conferred 43,459 degrees at the combined levels of baccalaureate, master's, doctoral, and first-

professional. This represents a 16% increase in graduates since 2004-05 and an increase of 34.5% since 1999-2000.

UNC is engaged in a project with the North Carolina Community College System to set targets for degrees produced, especially at the baccalaureate level for UNC.

Degree production is characterized overall, by discipline, by campus, and by areas of high need.

#### 3.1. DEGREES CONFERRED

UNC's overall increase of 16% since 2004-05 reflects a 15.3% increase in baccalaureate degrees, a 19.5% increase

in master's degrees, a 26% increase in doctoral degrees, and a 9.6% increase in first-professional degrees.

TABLE 3.1A. NUMBER OF DEGREES CONFERRED IN UNC BY LEVEL AND GENDER, 2004-05 THROUGH 2008-09

Level & Gender	2004-05	2005-06	2006-07	2007-08	2008-09
Bachelor's					
Male	11,310	11,297	11,913	12,415	12,992
Female	15,690	16,130	16,411	17,690	18,124
Total	27,000	27,427	28,324	30,105	31,116
Master's					
Male	3,293	3,420	3,461	3,710	3,760
Female	5,201	5,491	5,819	6,019	6,387
Total	8,494	8,911	9,280	9,729	10,147
Doctoral					
Male	501	541	568	581	599
Female	489	510	561	618	650
Total	990	1,051	1,129	1,199	1,249
First-Professional					
Male	360	379	375	377	408
Female	504	492	484	514	539
Total	864	871	859	891	947
Grand Total	37,348	38,260	39,592	41,924	43,459

Source: Deg.AT003.K

The following table sorts the degrees awarded by field and level. The area of health professions shows significant growth at all levels. Engineering has seen modest growth at the baccalaureate level but more growth at the master's and doctoral levels. Business and management have continued to see growth in degrees produced at the baccalaureate and master's levels, but a drop off at the

doctoral level. Education has seen robust growth at the baccalaureate and master's levels but is steady at the doctoral level. The physical sciences have seen good growth at all levels. Computer science has shown growth at the master's and doctoral levels but has seen steady decline at the baccalaureate level, undoubtedly a lingering effect of the dot.com market decline.

TABLE 3.1B. NUMBER OF DEGREES CONFERRED IN UNC BY LEVEL AND FIELD OF STUDY, 2004-05 THROUGH 2008-09

Field of Study (2-digit CIP)	Bachelor's*				Master's**				Doctorate						
	2004-05	2005-06	2006-07	2007-08	2008-09	2004-05	2005-06	2006-07	2007-08	2008-09	2004-05	2005-06	2006-07	2007-08	2008-09
Agriculture & Nat. Resources (01,02,03)	548	557	587	543	607	155	141	131	117	136	41	49	43	45	56
Architecture & Environ. Des. (04)	158	164	164	176	153	96	105	92	101	101	7	8	6	10	5
Area Studies (05)	200	205	240	254	307	22	26	12	23	29					
Biological Sciences (26)	1,598	1,679	1,695	1,803	1,842	189	204	192	197	187	157	162	168	204	197
Business & Management (06,07,08,52)	4,792	4,644	4,610	4,871	5,002	1,538	1,533	1,614	1,642	1,750	14	13	13	13	8
Communications (09, 10)	1,855	1,889	1,830	2,084	2,050	50	71	60	59	54	20	13	12	10	12
Computer & Information Sc.(11)	790	595	530	537	531	366	326	326	375	457	29	34	36	32	42
Education (13)	2,361	2,574	2,657	2,877	3,063	2,151	2,277	2,562	2,504	2,674	166	164	163	217	163
Engineering (14, 15, 49)	2,043	1,910	2,191	2,025	2,181	599	628	624	679	684	132	148	186	154	185
Fine and Applied Arts (48, 50)	1,420	1,390	1,461	1,452	1,481	182	161	189	226	171	22	19	19	18	28
Foreign Languages (16)	293	324	299	339	367	43	51	58	52	59	28	29	31	25	19
Health Professions (17, 18, 51)	1,739	2,001	2,060	2,556	2,722	969	1,067	1,144	1,215	1,281	65	98	113	120	122
History (54)	600	703	683	749	722	89	104	103	108	118	14	17	13	24	18
Home Economics (12, 19)	432	476	488	517	503	45	44	32	48	52	7	6	6	4	8
Letters (23, 38)	1,339	1,321	1,343	1,271	1,242	229	276	252	274	227	39	34	28	34	30
Library Science (25)						344	358	322	404	369	4	6	2	4	2
Mathematics (27)	266	222	241	293	295	103	103	120	107	79	38	42	45	56	69
Physical Sciences (40)	564	524	614	668	697	138	156	137	150	178	67	73	99	72	90
Psychology (42)	1,715	1,708	1,766	1,971	1,903	158	142	171	175	216	44	36	60	52	41
Public Affairs & Services (31, 43, 44)	1,890	1,983	2,201	2,387	2,624	636	752	753	859	884	27	21	20	21	45
Social Sciences (45)	2,177	2,298	2,340	2,413	2,409	232	219	206	218	242	50	61	54	55	69
Interdisciplinary Studies (30)	67	73	104	103	146	61	61	91	100	102	19	18	12	29	40
Other	153	187	220	216	269	99	106	89	96	97					
Total	27,000	27,427	28,324	30,105	31,116	8,494	8,911	9,280	9,729	10,147	990	1,051	1,129	1,199	1,249

Source: Accountability Gradcip.U

\* Includes post-baccalaureate certificates that meet credit hour requirements (18) to be reported to IPEDS.

\*\* Includes intermediate degrees and post-master's certificates that meet credit hour requirements (24) to be reported to IPEDS.

FIGURE 3.1A. FIVE-YEAR PERCENTAGE CHANGE IN NUMBER OF BACHELOR'S DEGREES CONFERRED BY UNC BY FIELD OF STUDY

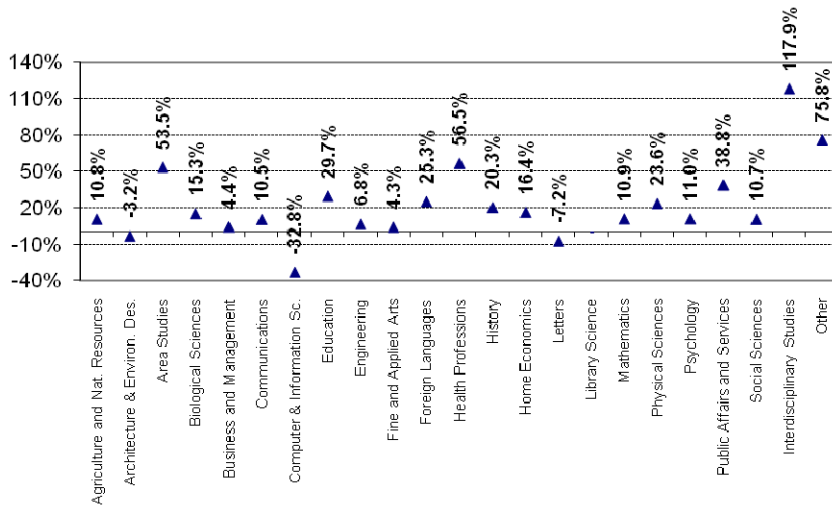


FIGURE 3.1B. FIVE-YEAR PERCENTAGE CHANGE IN NUMBER OF MASTER'S DEGREES CONFERRED BY UNC BY FIELD OF STUDY

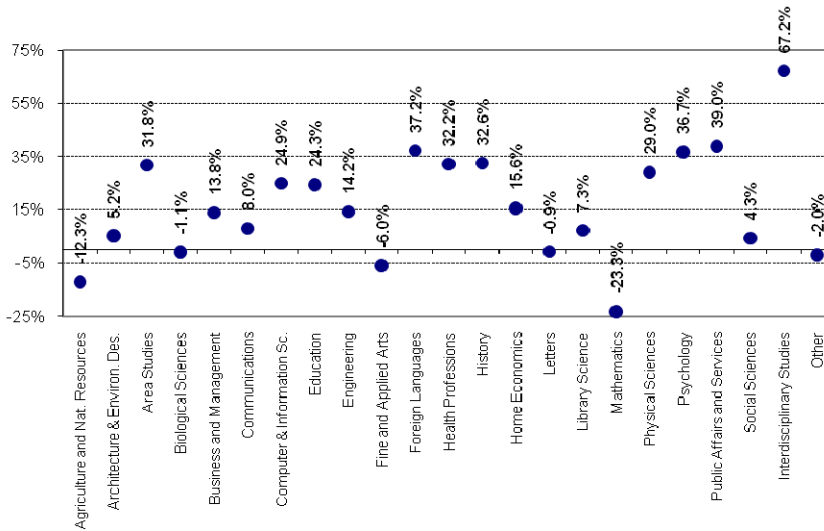


FIGURE 3.1C. FIVE-YEAR PERCENTAGE CHANGE IN NUMBER OF DOCTORAL DEGREES CONFERRED BY UNC BY FIELD OF STUDY

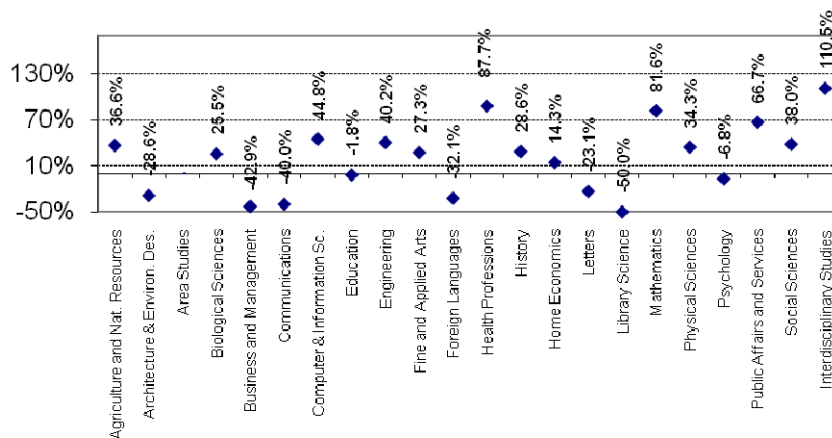


TABLE 3.1C. NUMBER OF DEGREES CONFERRED IN UNC BY INSTITUTION AND LEVEL, 2004-05 THROUGH 2008-09

Institution	Bachelor's*				Master's**				Doctorate						
	2004-05	2005-06	2006-07	2007-08	2008-09	2004-05	2005-06	2006-07	2007-08	2008-09	2004-05	2005-06	2006-07	2007-08	2008-09
ASU	2,663	2,556	2,425	2,634	2,825	580	585	639	687	735	4	0	3	15	6
ECU	3,065	3,288	3,402	3,476	3,620	1,201	1,375	1,377	1,404	1,538	35	52	59	57	70
ECSU	296	330	350	389	396	9	7	18	22	22					
FSU	698	709	685	775	773	123	122	162	160	145	11	2	2	13	9
NCA&T	998	958	1,321	1,172	1,372	306	339	324	437	377	7	12	6	32	33
NCCU	732	713	774	854	809	317	282	348	390	373					
NCSU	4,620	4,415	4,601	4,535	4,623	1,332	1,485	1,457	1,507	1,664	343	369	411	328	457
UNCA	574	559	578	704	604	1	4	4	11	6					
UNC-CH	3,888	3,773	3,787	4,131	4,236	1,847	1,915	1,871	1,837	1,826	459	490	512	600	483
UNCC	2,843	2,948	3,118	3,386	3,474	799	852	976	1,059	1,036	40	43	48	45	68
UNCG	1,973	2,109	2,199	2,394	2,456	951	894	915	990	1,007	89	76	74	93	107
UNCP	581	619	683	687	739	139	123	228	179	194					
UNCW	2,206	2,276	2,268	2,457	2,480	317	359	348	398	435	0	0	1	1	4
UNCSA	120	129	131	119	150	31	29	40	42	37					
WCU	1,200	1,305	1,255	1,525	1,547	468	481	496	475	625	2	7	13	15	12
WSSU	543	740	747	867	1,012	73	59	77	131	127					
UNC Total	27,000	27,427	28,324	30,105	31,116	8,494	8,911	9,280	9,729	10,147	990	1,051	1,129	1,199	1,249

Source: Deg.AT003.K

\* Includes post-baccalaureate certificates that meet credit hour requirements (18) to be reported to IPEDS.

\*\* Includes intermediate degrees and post-master's certificates that meet credit hour requirements (24) to be reported to IPEDS.

While the number of first-professional degrees awarded has increased overall, some areas have increased and others decreased. The number of law degrees awarded has increased primarily due to an increase in the size of the beginning class at North Carolina Central's law school. Dentistry and medicine have seen modest declines in degrees produced. Both have been addressed with statewide plans. The Plan for Dentistry includes the expansion of each dentistry class at UNC-Chapel Hill from approximately 80 to 100 and the establishment of a new dentistry school at ECU, with a class size of 50. When both are fully implemented, UNC institutions should be producing about 70 more dentists per year.

The Plan for Medicine calls for expansion at both public medical schools. At UNC-CH, the medical school class size

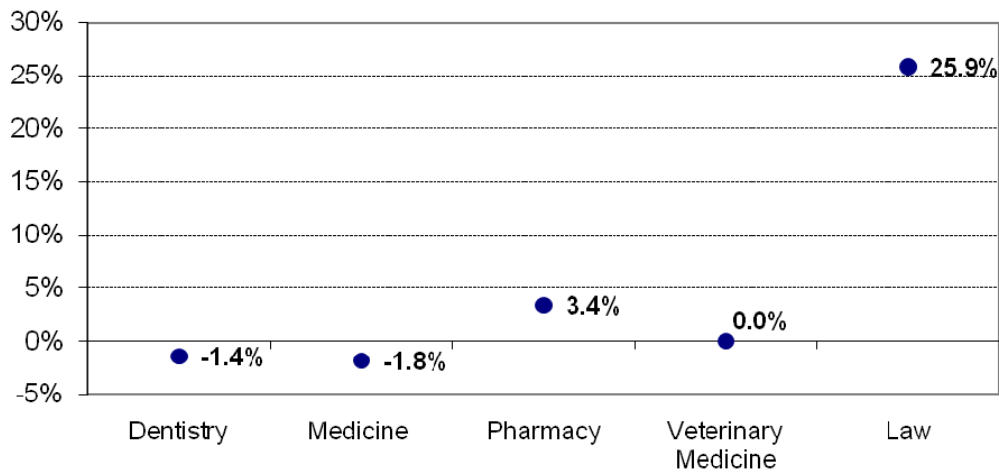
would expand from 160 to 230, with a plan to have satellites at both Charlotte and Asheville for the final two years for these 70 new students. ECU would expand from the approximately 73 per class to 120 per class. This should result in approximately 117 more physicians being produced on an annual basis. Unfortunately the state's budgetary situation has delayed the implementation of the Plan for Medicine.

In pharmacy, UNC-CH has been authorized to add a satellite program in Asheville with up to 40 additional students per class. Based on the advice of an external consulting team of pharmacy deans, that should meet North Carolina's needs in pharmacy for the near term.

TABLE 3.1D. NUMBER OF FIRST-PROFESSIONAL DEGREES CONFERRED IN UNC BY FIELD OF STUDY, 2004-05 THROUGH 2008-09

Field of Study & Institution	2004-05	2005-06	2006-07	2007-08	2008-09	% Change from 2004-05 to 2008-09
Dentistry (DDS, DMD)						
UNC-CH	83	77	73	83	82	-1.4%
Medicine (MD)						
ECU	72	69	60	72	65	-10.1%
UNC-CH	154	146	156	165	157	2.0%
Total	226	215	216	237	222	-1.8%
Pharmacy						
UNC-CH	146	148	140	135	151	3.4%
Veterinary Medicine						
NCSU	73	75	75	74	73	0.0%
Law						
NCCU	109	119	123	141	191	82.0%
UNC-CH	227	237	232	221	228	0.5%
Total	336	356	355	362	419	25.9%
UNC Total	864	871	859	891	947	1.0%

FIGURE 3.1D. FIVE-YEAR PERCENTAGE CHANGE IN NUMBER OF FIRST-PROFESSIONAL DEGREES CONFERRED IN UNC BY FIELD OF STUDY



### 3.2. DEGREE PRODUCTION IN HIGH-NEED AREAS

While the overall production of degrees has been increasing, it is also important to produce more degrees in high-need areas. The three areas identified for the most attention have been teacher education, nursing, and the STEM disciplines (science, technology,

engineering, and mathematics). The following sections provide more detail about these three areas. Teacher education and nursing have had careful planning for their expansion. STEM areas have had a high priority for new degree approval or expansion.

### 3.2A. TEACHER EDUCATION

In 2004, the Board of Governors adopted a plan to increase the number of teachers produced by UNC institutions overall and in the four high-need areas of mathematics, sciences, middle grades, and special education. There have been three measure-up years, 2006-07, 2007-08, and 2008-09. UNC planned to update the goals for teacher education in 2009, but the economic downturn and the cuts to public schools, along with increasing class sizes, resulted in a pause to see what adjustments may be needed to accommodate the new economic reality. UNC has in place recruitment plans at each campus to produce more teachers based on the work of Noel-Levitz.

The overall increase in teachers produced took a decidedly upward tick in 2008-09, to the level of 4,355. The planning and support for campus recruitment are beginning to pay off. A 35% increase in preparation for licensure in high-need areas starts us on the way to meet the state's need for math and science teachers. While we are focused on producing more teachers, efforts are being accelerated to produce better teachers and to build bridges between teacher preparation and employment. The Teacher Quality Research project is pointing the way to things that can be done on the campuses and across the state to improve teacher quality.

**TABLE 3.2A(1). OVERALL PRODUCTION OF TRADITIONAL TEACHER EDUCATION GRADUATES, GRADUATE-LEVEL INITIAL LICENSURE, AND ALTERNATIVE LICENSURE COMPLETERS BY INSTITUTION**

Institution	2006-07	2007-08	2008-09
ASU	465	475	580
ECU	737	751	796
ECSU	50	56	72
FSU	133	108	141
NCA&T	87	52	108
NCCU	141	203	126
NCSU	320	279	362
UNCA	66	59	72
UNC-CH	175	174	190
UNCC	595	623	566
UNCG	492	414	451
UNCP	153	151	122
UNCW	354	334	396
WCU	206	273	330
WSSU	29	31	43
UNC Total	4,003	3,983	4,355

**TABLE 3.2A(2). UNC TEACHER EDUCATION PRODUCTION BY AREA**

Area	2006-07	2007-08	2008-09
Mathematics	256	225	327
Science	188	183	281
Middle Grades	196	166	414
Special Education	366	321	345
UNC Total	1,006	895	1,367

Note: Middle Grades mathematics and science concentrations are included in mathematics and science categories.

### 3.2B. NURSING EDUCATION ENROLLMENT

Following a statewide taskforce on nursing, the Board of Governors formed a Board committee to review the recommendations of the task force and make recommendations for expanding the production of nursing graduates at various levels. Key among those recommendations was to set in motion the doubling of the number of pre-licensure nurses produced by UNC, the expansion of the Master of Nursing in Nursing Education to provide faculty for community colleges to expand their programs, increase the level of education of nurses with an expansion of RN-to-BSN programs, and expand the production of doctorates in nursing to replenish faculty

ranks in UNC and, where needed, in the community colleges.

In the past five years, undergraduate enrollment in nursing programs has grown from 2,571 to 2,977, an increase of 16%; master's-level enrollment has grown from 924 to 1,465, an increase of 59%; doctoral enrollment has grown from 66 to 118, an increase of 79%. Fayetteville State University has suspended enrollment in its nursing program while the campus evaluates the program's future, and the Board of Governors has approved Appalachian State University's starting a pre-licensure nursing program in the summer of 2010.

**TABLE 3.2B. NURSING DEGREE CREDIT HEADCOUNT ENROLLMENT, 1997-2009**

Institution	Level	1997	1998	1999	2000	2001	2002	2003	2004	2005	2006	2007	2008	2009
ASU	B											28	41	36
ECU	B	423	432	437	450	420	382	483	497	500	532	576	622	616
	M	102	121	92	105	92	73	123	211	290	355	413	482	485
	D						2	10	15	19	21	23	27	30
FSU	B	28	44	35	26	17	13	23	49	49	85	207	95	74
NCA&T	B	163	155	139	137	153	176	220	220	220	167	136	118	123
NCCU	B	163	157	126	140	113	95	91	134	109	95	121	128	103
UNC-CH	B	305	295	300	297	334	307	311	328	331	346	358	387	409
	M	146	169	142	152	168	159	149	163	179	168	171	166	202
	D	27	36	39	42	50	51	52	51	57	56	61	59	55
UNCC	B	173	234	217	191	218	216	224	206	187	221	299	296	287
	M	161	149	159	152	172	174	176	172	158	166	189	201	210
UNCG	B	319	355	371	341	289	295	323	314	318	329	341	340	307
	M	230	243	290	307	238	240	247	258	281	304	313	288	311
	D									12	21	26	32	33
UNCP	B	47	58	49	56	52	46	44	54	99	148	151	132	107
UNCW	B	165	162	150	137	127	122	132	151	163	176	197	207	219
	M		20	28	30	25	19	21	19	14	20	46	52	62
WCU	B	149	157	137	122	116	119	67	133	134	192	156	216	237
	M			30	27	41	15	29	41	49	56	73	83	92
WSSU	B	362	252	270	212	216	201	385	485	664	554	568	545	459
	M							50	60	63	83	110	119	103
UNC Total	B	2,297	2,301	2,231	2,109	2,055	1,972	2,303	2,571	2,774	2,845	3,138	3,127	2,977
	M	639	702	741	773	736	680	795	924	1,034	1,152	1,315	1,391	1,465
	D	27	36	39	42	50	53	62	66	88	98	110	118	118

Source: SDF.PR009C

Notes: 1. Enrollment includes upper-division undergraduate, post-baccalaureate, and intermediate/specialist enrollment in the fall of each year.

2. "B" = bachelor's degree, including post-baccalaureate certificates at UNCC and UNCG.

3. "M" = master's degree, including intermediate/specialist degrees at ECU, UNCC, and UNCG.

4. "D" = doctoral degree (or doctorate).

### 3.2C. DEGREES PRODUCED IN NURSING PROGRAMS

Overall, degree production has been on a definite upswing. At all levels, UNC institutions produced 1,178 nursing graduates in 2002-03, the base year for nursing expansion. That number increased to 2,116 in 2008-09, an increase of 79.6% over the base year. Pre-licensure nursing production has grown to 1,109 from 686 in the base year, an increase of 61.7%. RN-to-BSN programs, which increase the educational level of nurses, have grown from 302 in the base year to 583 in 2008-09, an increase of 93%. Master's

programs in nursing provide advanced-practice nurses and nursing faculty. There the growth has been quite incredible, from 183 in the base year to 391 in 2008-09, an increase of 114%. The economic climate may slow these increases, but UNC campuses have responded to the Nursing Task Force's call to increase nursing production by 25% by going well beyond this, and they are prepared to expand further to meet the need for nursing graduates at all levels in North Carolina.

TABLE 3.2C. DEGREES PRODUCED IN NURSING PROGRAMS

Degrees	Institution	Level	2003-04	2004-05	2005-06	2006-07	2007-08	2008-09
Other	ECU	Intermediate/Specialist	0	0	4	3	4	7
	UNCC	Post-Baccalaureate Certificate	0	0	7	11	12	9
		Intermediate/Specialist	0	0	1	2	2	0
	UNCG	Post-Baccalaureate Certificate	0	0	0	0	0	2
		Intermediate/Specialist	0	0	0	2	1	4
Total			0	0	12	18	19	22
BSN	ASU	Bachelor's	0	0	0	0	4	0
	ECU	Bachelor's	147	167	187	203	217	232
	FSU	Bachelor's	0	0	2	8	74	37
	NCA&T	Bachelor's	42	61	46	59	56	57
	NCCU	Bachelor's	50	36	42	41	42	59
	UNC-CH	Bachelor's	164	174	171	202	220	222
	UNCC	Bachelor's	90	86	88	57	89	105
	UNCG	Bachelor's	103	94	101	87	110	101
	UNCP	Bachelor's	0	0	0	35	28	35
	UNCW	Bachelor's	49	51	69	66	90	90
	WCU	Bachelor's	43	42	54	54	48	53
	WSSU	Bachelor's	100	118	148	292	147	118
Total			788	829	908	1,104	1,125	1,109
MSN	ECU	Master's	11	24	42	60	76	111
	UNC-CH	Master's	50	46	67	60	57	55
	UNCC	Master's	60	48	62	56	79	40
	UNCG	Master's	121	93	88	70	107	92
	UNCW	Master's	6	9	9	2	8	19
	WCU	Master's	0	11	2	13	28	29
	WSSU	Master's	0	13	11	1	37	45
Total			248	244	281	262	392	391
PhD	ECU	Doctorate	0	1	0	5	1	1
	UNC-CH	Doctorate	8	6	10	6	8	6
	UNCG	Doctorate	0	0	0	0	1	4
	Total			8	7	10	11	10
RN to BSN	ASU	Bachelor's	0	0	0	0	5	34
	ECU	Bachelor's	36	58	39	47	21	44
		Master's	4	9	14	16	4	0
	FSU	Bachelor's	6	19	8	6	12	4
	NCA&T	Bachelor's	5	0	2	0	0	0
	NCCU	Bachelor's	4	5	0	7	4	5
	UNC-CH	Bachelor's	2	0	1	0	0	0
	UNCC	Bachelor's	52	33	23	38	73	89
	UNCG	Bachelor's	50	57	58	63	55	53
	UNCP	Bachelor's	26	13	27	21	19	21
	UNCW	Bachelor's	16	8	14	7	7	11
	WCU	Bachelor's	10	18	20	6	33	37
	WSSU	Bachelor's	81	65	169	1	231	285
		Master's	0	13	0	16	12	0
Total			292	298	375	228	476	583
UNC Total			1,336	1,378	1,586	1,623	2,022	2,116

Source: SDF.ER020b

Notes: 1. Nursing selected as CIP 5116

3. "BSN" = Students coded Generic or AHEC on the

5. "PhD" = Students with Degree Intent of PhD

2. "RN to BSN" = Students coded RN on the SDF

4. "MSN" = Students coded Generic or AHEC with Degree Intent of Masters

---

### 3.2D. NURSING EXAMINATION

Licensure is required for employment as a nurse in North Carolina. The exam for this, the NCLEX, is given in every state and data are reported by state. For 2009, UNC institutions with nursing programs had an average pass rate of 92%, with campus average pass rates ranging from 80% to 95%. These pass rates are based on the first writing of the exam. Many candidates for licensure pass in subsequent sittings for the exam.

Nursing degree programs, in addition to being approved by the Board of Governors, need to be approved by the North Carolina Board of Nursing, both of which have

applicable standards for remaining in good standing. A program failing to achieve an average pass rate of 85% for two consecutive years invokes Board of Governors evaluation processes. The Board of Nursing standard is that NCLEX passing rates for first-time writers be at 95% of the national pass rate or greater, based on a rolling three-year average. For 2008, that rate was 83%. No campus is below the Board of Governors standard. While UNC Pembroke's new program is technically below the Board of Nursing standard, it is not being held to the standard because of the strong positive direction the program is taking.

TABLE 3.2.D. THE UNIVERSITY OF NORTH CAROLINA NURSING EXAMINATION (NCLEX-RN) RESULTS, 1990 TO 2009 (FIRST-TIME TEST TAKERS ONLY)

Institution	1990	1991	1992	1993	1994	1995	1996	1997	1998	1999	2000	2001	2002	2003	2004	2005	2006	2007	2008	2009
<b>ECU</b>																				
Number Tested	61	70	88	130	117	131	136	165	111	127	120	147	165	134	161	181	194	220	248	257
Number Passed	61	64	85	118	106	126	115	153	104	118	109	136	160	109	134	170	192	209	237	248
% Passed	100%	91%	97%	91%	91%	96%	85%	93%	94%	93%	91%	93%	97%	81%	83%	94%	99%	95%	96%	96%
<b>FSU</b>																				
Number Tested	n/a	n/a	n/a	n/a	n/a	n/a	n/a	n/a	n/a	n/a	n/a	n/a	n/a	n/a	n/a	n/a	n/a	22	61	40
Number Passed	n/a	n/a	n/a	n/a	n/a	n/a	n/a	n/a	n/a	n/a	n/a	n/a	n/a	n/a	n/a	n/a	n/a	14	24	35
% Passed	n/a	n/a	n/a	n/a	n/a	n/a	n/a	n/a	n/a	n/a	n/a	n/a	n/a	n/a	n/a	n/a	n/a	64%	39%	88%
<b>NCA&amp;T</b>																				
Number Tested	7	11	31	33	39	45	81	62	56	53	48	37	56	52	43	67	54	51	54	57
Number Passed	7	10	27	28	30	39	64	48	48	44	37	29	43	39	35	46	37	43	49	50
% Passed	100%	91%	87%	85%	77%	87%	79%	77%	86%	83%	77%	78%	77%	75%	81%	69%	69%	84%	91%	88%
<b>NCCU</b>																				
Number Tested	6	16	9	27	17	50	31	45	49	47	32	36	38	37	37	40	38	43	40	55
Number Passed	5	15	9	22	14	48	28	37	39	31	30	29	31	30	24	26	31	39	36	48
% Passed	83%	94%	100%	81%	82%	96%	90%	82%	80%	66%	94%	81%	82%	81%	65%	65%	82%	91%	90%	87%
<b>UNC-CH</b>																				
Number Tested	58	84	107	117	112	110	119	114	134	123	123	134	161	160	152	160	155	178	187	179
Number Passed	57	78	104	104	106	107	113	109	129	110	114	126	151	149	147	150	152	166	182	174
% Passed	98%	93%	97%	89%	95%	97%	95%	96%	96%	89%	93%	94%	94%	93%	97%	94%	98%	93%	97%	97%
<b>UNCC</b>																				
Number Tested	51	75	97	120	110	101	103	105	73	77	92	71	76	83	88	88	87	58	90	102
Number Passed	48	69	92	96	90	96	95	95	64	71	76	67	65	74	63	68	84	55	82	82
% Passed	94%	92%	95%	80%	82%	95%	92%	90%	88%	92%	83%	94%	86%	89%	72%	77%	97%	95%	91%	80%
<b>UNCG</b>																				
Number Tested	65	73	89	85	102	79	77	91	78	95	91	84	80	75	80	87	86	84	93	91
Number Passed	58	67	84	75	91	76	71	88	68	85	75	77	78	71	64	81	80	77	83	86
% Passed	89%	92%	94%	88%	89%	96%	92%	97%	87%	89%	82%	92%	98%	95%	80%	93%	93%	92%	89%	95%
<b>UNCP</b>																				
Number Tested	n/a	n/a	n/a	n/a	n/a	n/a	n/a	n/a	n/a	n/a	n/a	n/a	n/a	n/a	n/a	n/a	n/a	n/a	30	41
Number Passed	n/a	n/a	n/a	n/a	n/a	n/a	n/a	n/a	n/a	n/a	n/a	n/a	n/a	n/a	n/a	n/a	n/a	n/a	25	36
% Passed	n/a	n/a	n/a	n/a	n/a	n/a	n/a	n/a	n/a	n/a	n/a	n/a	n/a	n/a	n/a	n/a	n/a	n/a	80%	88%
<b>UNCW</b>																				
Number Tested	21	21	30	38	58	47	69	51	62	45	56	54	51	38	47	53	70	69	100	81
Number Passed	21	20	30	37	50	46	59	45	53	38	44	49	46	34	35	50	67	61	90	75
% Passed	100%	95%	100%	97%	86%	98%	86%	88%	85%	84%	79%	91%	90%	89%	74%	94%	96%	88%	90%	93%
<b>WCU</b>																				
Number Tested	35	31	30	39	34	39	33	43	32	39	45	43	41	42	42	41	55	53	54	58
Number Passed	31	28	28	39	33	38	32	33	29	37	39	41	36	30	37	36	47	41	50	55
% Passed	89%	90%	93%	100%	97%	97%	97%	77%	91%	95%	87%	95%	88%	71%	88%	88%	85%	77%	93%	95%
<b>WSSU</b>																				
Number Tested	20	9	50	52	71	64	88	73	121	60	92	63	44	34	99	113	122	105	148	116
Number Passed	14	8	48	44	61	58	78	64	90	55	83	53	41	32	96	98	101	98	127	106
% Passed	70%	89%	96%	85%	86%	91%	89%	88%	74%	92%	90%	84%	93%	94%	97%	87%	83%	93%	86%	91%
<b>Total UNC Test Takers</b>																				
Number Tested	324	390	531	641	660	666	737	749	716	666	699	669	712	655	749	830	861	920	1,105	1,077
Number Passed	302	359	507	563	581	634	655	672	624	589	607	607	651	568	635	725	791	828	984	995
% Passed	93%	92%	95%	88%	88%	95%	89%	90%	87%	88%	87%	91%	91%	87%	85%	87%	92%	90%	89%	92%

Source: Nur.AT001.U Note: "n/a" stands for not applicable.

### 3.2.E. STEM DISCIPLINES

TABLE 3.2.E. NUMBER AND PERCENTAGE OF DEGREES CONFERRED IN STEM DISCIPLINES BY INSTITUTION AND LEVEL, 2003-04 THROUGH 2008-09

Institution	Level	2003-04		2004-05		2005-06		2006-07		2007-08		2008-09	
		#	%	#	%	#	%	#	%	#	%	#	%
ASU	Bachelor's	195	7.8%	218	8.2%	230	9.0%	207	8.5%	231	8.8%	212	7.5%
	Master's	32	5.9%	24	4.1%	29	5.0%	30	4.7%	41	6.0%	51	6.9%
ECU	Bachelor's	477	15.8%	494	16.1%	529	16.1%	572	16.8%	559	16.1%	595	16.4%
	Master's	82	7.7%	110	9.2%	103	7.5%	79	5.7%	84	6.0%	101	6.6%
	Doctorate	4	19.0%	13	37.1%	10	19.2%	16	27.1%	5	8.8%	15	21.4%
ECSU	Bachelor's	73	20.4%	65	22.0%	50	15.2%	70	20.0%	48	12.3%	71	17.9%
	Master's	75	10.9%	57	8.2%	72	10.2%	58	8.5%	67	8.6%	58	7.5%
FSU	Bachelor's	6	7.3%	8	6.5%	2	1.6%	2	1.2%	9	5.6%	2	1.4%
	Master's	339	36.8%	390	39.1%	318	33.2%	351	26.6%	270	23.0%	395	28.8%
NCA&T	Bachelor's	142	47.5%	130	42.5%	127	37.5%	147	45.4%	166	38.0%	130	34.5%
	Master's	21	100.0%	7	100.0%	12	100.0%	6	100.0%	22	68.8%	15	45.5%
	Doctorate	59	9.0%	65	8.9%	60	8.4%	72	9.3%	80	9.4%	87	10.8%
NCCU	Bachelor's	47	15.7%	45	14.2%	33	11.7%	48	13.8%	38	9.7%	47	12.6%
	Master's	2,477	54.4%	2,393	51.8%	2,188	49.6%	2,327	50.6%	2,230	49.2%	2,280	49.3%
NCSU	Bachelor's	803	57.2%	681	51.1%	717	48.3%	702	48.2%	723	48.0%	814	48.9%
	Master's	234	69.2%	251	73.2%	258	69.9%	322	78.3%	252	76.8%	360	78.8%
	Doctorate	144	24.4%	168	29.3%	134	24.0%	131	22.7%	189	26.8%	148	24.5%
UNC-CH	Bachelor's	550	14.8%	643	16.5%	588	15.6%	626	16.5%	671	16.2%	725	17.1%
	Master's	236	12.6%	208	11.3%	203	10.6%	185	9.9%	182	9.9%	195	10.7%
	Doctorate	194	44.2%	167	36.4%	203	41.4%	209	40.8%	256	42.7%	214	44.3%
UNCC	Bachelor's	558	20.1%	550	19.3%	517	17.5%	641	20.6%	652	19.3%	671	19.3%
	Master's	234	27.6%	209	26.2%	219	25.7%	197	20.2%	224	21.2%	220	21.2%
	Doctorate	12	46.2%	26	65.0%	25	58.1%	23	47.9%	27	60.0%	31	45.6%
UNCG	Bachelor's	160	7.7%	149	7.6%	170	8.1%	157	7.1%	173	7.2%	180	7.3%
	Master's	87	8.6%	50	5.3%	55	6.2%	56	6.1%	63	6.4%	53	5.3%
UNCP	Bachelor's	74	12.1%	75	12.9%	98	15.8%	114	16.7%	101	14.7%	117	15.8%
	Master's	307	14.4%	320	14.5%	314	13.8%	304	13.4%	338	13.8%	307	12.4%
UNCW	Bachelor's	50	16.5%	57	18.0%	48	13.4%	46	13.2%	59	14.8%	58	13.3%
	Master's	108	9.3%	146	12.2%	152	11.6%	157	12.5%	199	13.0%	236	15.3%
	Doctorate	17	4.3%	26	5.6%	16	3.3%	24	4.8%	25	5.3%	39	6.2%
WCU	Bachelor's	73	13.6%	73	13.4%	63	8.5%	67	9.0%	57	6.6%	69	6.8%
	Master's	1	5.3%	2	2.7%	4	6.8%	10	13.0%	5	3.8%	7	5.5%
WSSU	Bachelor's	5,669	21.5%	5,806	21.6%	5,483	20.1%	5,854	20.8%	5,865	19.6%	6,151	19.9%
	Master's	1,737	21.0%	1,550	18.3%	1,558	17.5%	1,530	16.6%	1,625	16.8%	1,721	17.0%
	Doctorate	465	48.9%	464	46.9%	508	48.3%	577	51.1%	563	47.0%	639	51.2%

Source: SDF.PR009E

- Notes: 1. "Bachelor's" includes post-baccalaureate certificates and "Master's" includes intermediate/specialist degrees.  
2. "STEM" stands for Science, Technology, Engineering, and Math. It includes the following 2-digit CIP codes: 01, 03, 11, 14, 15, 16, 26, 27, and 40.  
3. Percentage indicates the degrees conferred in STEM disciplines over the total degrees conferred at the same level and in the same year.  
4. Excludes post-baccalaureate and post-master's certificates that did not meet credit hour requirements for IPEDS reporting.

### 3.3. ECONOMIC IMPACT OF DEGREES AWARDED

There are many ways to measure the economic impact of a university. The overall budget of the University of North Carolina from all sources is approximately \$7.4 billion. Or one can highlight that sponsored research contracts and grants received each year exceed \$1 billion. But the most important measure is the value of the core activity of the University.

Many studies show the value of a degree in terms of increased annual or lifetime earnings. Dr. Michael Walden, William Neal Reynolds Distinguished Professor at North Carolina State University, assisted by Dr. Xiaoyun Yang of UNC General Administration, has conducted a study to document the lifetime economic value of the degrees of UNC graduates who are employed in North Carolina. The study looks at how much more valuable a bachelor's degree is than a high school diploma, a master's degree than a bachelor's degree, and a doctorate than a master's degree.

To do this assessment, data on UNC graduates were combined with data at the North Carolina Employment Security Commission. This kind of analysis utilizes the core role of the University to increase knowledge and award credentials to make an economic impact. As indicated by the following table, without a multiplier (a means to recognize the additional economic activity generated) the impact would be \$7.4 billion, but with a conservative multiplier the impact would be \$8.8 billion. Equally important is the impact of this income on state coffers. The author concludes that for every dollar invested in UNC, between \$1.4 and \$1.6 of state and local revenue is realized.

The study is on the web, at [http://www.northcarolina.edu/nc tomorrow/UNC\\_Economic\\_Impact\\_-\\_Walden.pdf](http://www.northcarolina.edu/nc tomorrow/UNC_Economic_Impact_-_Walden.pdf).

TABLE 3.3A. EXPECTED AGGREGATE NET PRESENT VALUE OF ADDITIONAL LIFETIME INCOME EARNED BY GRADUATES OF UNC INSTITUTIONS WHO REMAIN WORKING IN NORTH CAROLINA, 2003-04 GRADUATING CLASS, IN 2006 DOLLARS

Institution	Without Multiplier Effects	With Multiplier Effects
ASU	\$486,005,936	\$583,207,123
ECU	\$793,635,690	\$952,362,828
ECSU	\$25,048,073	\$30,057,688
FSU	\$102,411,554	\$122,893,865
NCA&T	\$168,774,550	\$202,529,460
NCCU	\$219,533,045	\$263,439,654
NCSU	\$1,400,442,255	\$1,680,530,706
UNCA	\$29,209,093	\$35,050,912
UNC-CH	\$1,443,952,217	\$1,732,742,660
UNCC	\$981,809,907	\$1,178,171,888
UNCG	\$743,071,824	\$891,686,189
UNCP	\$154,867,404	\$185,840,885
UNCW	\$375,991,188	\$451,189,426
WCU	\$297,087,750	\$365,505,300
WSSU	\$185,086,993	\$222,104,392
Total UNC	\$7,406,927,479	\$8,888,312,975

Source: Calculations using data from UNC General Administration and the Employment Security Commission of North Carolina

Note: Calculations from the University of North Carolina School of the Arts not included.

TABLE 3.3B. RATES OF RETURN TO STATE APPROPRIATIONS FOR UNC INSTRUCTIONAL SPENDING (\$ OF RETURN PER \$ OF PUBLIC EXPENDITURE, 2003-04 GRADUATING CLASS, IN 2006 DOLLARS)

Return of Lifetime Income of UNC Graduates Associated with Each Dollar of State Appropriations to Instructional Costs for the Graduates		Return of State and Local Public Revenue from UNC Graduates Associated with Each Dollar of State Appropriations to Instructional Costs for the Graduates	
Return without multiplier	9.7	Return without multiplier	1.4
Return with multiplier	11.6	Return with multiplier	1.6

## IV. TUITION

The University of North Carolina has a tuition plan in place that restricts the amount tuition and fees can increase in any one year. Increases in tuition and required fees are limited to 6.5% per year, and the actual operative percentage increase is tied to legislative funding in the previous year. The North Carolina Constitution requires

that public higher education be provided as free as practicable, and UNC tuition and fees are indeed among the lowest in the nation among our campuses peers. As [Table 4C](#) shows, each UNC campus is ranked the lowest or next to the lowest among their peers in terms of tuition and fees.

**TABLE 4A. UNC IN-STATE UNDERGRADUATE TUITION, 2005-06 THROUGH 2009-10**

Institution	2005-06	2006-07	2007-08	2008-09	2009-10	% Change from 2005-06 to 2009-10
ASU	\$1,821	\$2,221	\$2,221	\$2,263	\$2,341	28.6%
ECU	\$2,135	\$2,335	\$2,431	\$2,445	\$2,491	16.7%
ECSU	\$1,399	\$1,490	\$1,587	\$1,611	\$1,681	20.2%
FSU	\$1,546	\$1,746	\$1,826	\$1,826	\$1,905	23.2%
NCA&T	\$1,769	\$1,994	\$1,994	\$1,994	\$1,994	12.7%
NCCU	\$1,878	\$2,078	\$2,218	\$2,218	\$2,264	20.6%
NCSU	\$3,205	\$3,530	\$3,760	\$3,860	\$3,953	23.3%
UNCA	\$1,897	\$2,172	\$2,307	\$2,339	\$2,389	25.9%
UNC-CH	\$3,205	\$3,455	\$3,705	\$3,705	\$3,865	20.6%
UNCC	\$2,129	\$2,344	\$2,461	\$2,516	\$2,516	18.2%
UNCG	\$2,028	\$2,308	\$2,458	\$2,507	\$2,590	27.7%
UNCP	\$1,689	\$1,869	\$1,949	\$2,007	\$2,060	22.0%
UNCW	\$1,928	\$2,221	\$2,413	\$2,459	\$2,565	33.0%
UNCSA	\$2,755	\$3,074	\$3,224	\$3,224	\$3,357	21.9%
WCU	\$1,651	\$1,904	\$2,028	\$2,078	\$2,106	27.6%
WSSU	\$1,451	\$1,651	\$1,701	\$1,701	\$1,769	21.9%
UNC Average	\$2,030	\$2,275	\$2,393	\$2,422	\$2,490	22.7%

**TABLE 4B. UNC IN-STATE UNDERGRADUATE TUITION AND FEES COMBINED, 2005-06 THROUGH 2009-10**

Institution	2005-06	2006-07	2007-08	2008-09	2009-10	% Change from 2005-06 to 2009-10
ASU	\$3,280	\$4,023	\$4,241	\$4,333	\$4,491	36.9%
ECU	\$3,627	\$4,003	\$4,368	\$4,186	\$4,477	23.4%
ECSU	\$2,494	\$2,765	\$2,898	\$2,922	\$3,032	21.6%
FSU	\$2,521	\$2,867	\$3,044	\$3,044	\$3,177	26.0%
NCA&T	\$3,114	\$3,414	\$3,500	\$3,583	\$3,696	18.7%
NCCU	\$3,096	\$3,396	\$3,606	\$3,729	\$3,922	26.7%
NCSU	\$4,338	\$4,783	\$5,117	\$5,274	\$5,475	26.2%
UNCA	\$3,455	\$3,811	\$4,045	\$4,174	\$4,330	25.3%
UNC-CH	\$4,613	\$5,033	\$5,340	\$5,397	\$5,625	21.9%
UNCC	\$3,549	\$3,895	\$4,153	\$4,295	\$4,427	24.7%
UNCG	\$3,467	\$3,813	\$4,029	\$4,135	\$4,234	22.1%
UNCP	\$2,980	\$3,322	\$3,507	\$3,608	\$3,736	25.4%
UNCW	\$3,695	\$4,160	\$4,399	\$4,528	\$4,873	31.9%
UNCSA	\$4,335	\$4,704	\$5,061	\$5,166	\$5,449	25.7%
WCU	\$3,410	\$3,731	\$4,061	\$4,196	\$4,330	27.0%
WSSU	\$2,805	\$3,108	\$3,300	\$3,389	\$3,522	25.6%
UNC Average	\$3,424	\$3,802	\$4,042	\$4,122	\$4,300	25.6%

**TABLE 4C. UNC IN-STATE UNDERGRADUATE TUITION AND FEES COMPARED TO PEERS, FISCAL YEAR 2009-10**

Institution	No. of Peers	In-State Undergraduate Tuition & Fees	Highest Tuition & Fees among Peers	Lowest Tuition & Fees among Peers	Rank Order from the Bottom among Peers
ASU	19	\$4,491	\$12,420	\$4,491	1
ECU	16	\$4,477	\$10,180	\$4,374	2
ECSU	15	\$3,032	\$8,950	\$3,032	1
FSU	15	\$3,177	\$8,284	\$3,177	1
NCA&T	15	\$3,696	\$12,856	\$3,696	1
NCCU	17	\$3,922	\$11,698	\$3,922	1
NCSU	16	\$5,475	\$14,416	\$4,373	2
UNCA	12	\$4,330	\$13,234	\$4,330	1
UNC-CH	11	\$5,625	\$14,154	\$4,373	2
UNCC	17	\$4,427	\$10,506	\$4,427	1
UNCG	17	\$4,234	\$12,420	\$3,349	2
UNCP	19	\$3,736	\$8,944	\$3,736	1
UNCW	15	\$4,873	\$12,722	\$4,873	1
UNCSA	14	\$5,449	\$26,224	\$5,449	1
WCU	16	\$4,330	\$7,800	\$4,330	1
WSSU	17	\$3,522	\$11,606	\$3,522	1

Source: The Integrated Postsecondary Education Data System (IPEDS)

## V. FINANCIAL AID

While North Carolina has very low tuition and fees compared to its peers, the key to access and affordability is the availability of financial aid. The tables included here paint a picture of the availability and use of financial aid at UNC campuses. Table 5.1 shows the number of students on each campus receiving each type of financial aid as well as the overall amount. Typically students receive more than one kind of aid, so the numbers in each category are not mutually exclusive. Overall almost a billion dollars in all forms of financial aid was made available to students in the University for 2008-09. Federal grants are primarily Pell Grants, but even with increases in Pell Grants, North Carolina state grants exceeded federal grants, which demonstrates the deep support of education in North Carolina. Table 5.2 shows the percent of students on each campus receiving the various types of aid.

The cost of education is clearly not well understood by many. Many parents and children think they cannot afford to go to college, but Table 5.3 displays the

difference between the announced cost of attendance (which includes tuition, fees, room and board, books, travel, and other incidentals) and the net cost of attendance when grants and scholarships are included in the analysis. For example, on average the announced cost of attendance at UNC institutions was \$14,669 for 2008-09, but for those whose parents' income was between \$0 and \$30,000, the average net cost of attendance was \$5,406. The lowest net cost of attendance at a UNC campus was \$3,419 for 2008-09. The net cost would need to be covered by parental contribution, loans, or student work.

There is also concern about the debt load that graduates may face. Table 5.4 shows the average total loan amount graduates have at graduation that they are obligated to repay. While there is variation by campus, the average debt loan by all UNC graduating seniors in 2008-09 was \$17,309. The college loan area is undergoing major change, with loan rates likely to come down and repayment rates to be pegged to income.

TABLE 5.1. THE AMOUNT OF FINANCIAL AID RECEIVED BY UNC IN-STATE UNDERGRADUATE STUDENTS BY INSTITUTION AND TYPE, 2008-09

Institution	Aid Type	Number of Students	Aid Amount						
ASU	Federal Grants	2,601	\$9,678,290	FSU	Federal Grants	2,976	\$12,558,706		
	State Grants	4,718	\$14,128,244		State Grants	2,906	\$5,291,514		
	Institutional Grants	3,841	\$5,609,707		Institutional Grants	2,637	\$1,533,529		
	Federal Loans	5,508	\$27,816,958		Federal Loans	2,967	\$17,124,913		
	State Loans	684	\$2,957,841		State Loans	24	\$106,500		
	Parental Loans	1,789	\$12,304,098		Parental Loans	45	\$156,738		
	Other Aid	1,486	\$3,754,137		Other Aid	151	\$243,763		
	Total	8,233	\$76,249,275		Total	3,971	\$37,015,663		
	ECU	Federal Grants	4,595		\$18,324,698	NCA&T	Federal Grants	3,367	\$13,308,483
		State Grants	6,329		\$18,949,131		State Grants	3,911	\$10,569,528
Institutional Grants		4,091	\$13,059,194	Institutional Grants	2,302		\$4,199,491		
Federal Loans		8,292	\$47,834,353	Federal Loans	4,399		\$24,633,331		
State Loans		519	\$2,470,981	State Loans	27		\$129,677		
Parental Loans		1,176	\$8,798,033	Parental Loans	348		\$1,666,473		
Other Aid		1,694	\$7,374,336	Other Aid	1,160		\$5,390,095		
Total		11,087	\$116,810,726	Total	5,720		\$59,897,078		
ECSU		Federal Grants	1,624	\$6,689,075	NCCU		Federal Grants	3,064	\$12,973,048
		State Grants	1,814	\$5,035,997			State Grants	3,246	\$9,715,754
	Institutional Grants	961	\$819,631	Institutional Grants		2,724	\$4,490,008		
	Federal Loans	1,245	\$5,375,073	Federal Loans		3,760	\$21,077,601		
	State Loans	66	\$303,462	State Loans		666	\$1,024,765		
	Parental Loans	33	\$120,095	Parental Loans		477	\$2,363,434		
Other Aid	117	\$320,197	Other Aid	320	\$519,902				
Total	2,198	\$18,663,530	Total	4,523	\$52,164,512				

NCSU	Federal Grants	4,053	\$17,291,833	
	State Grants	6,910	\$24,417,973	
	Institutional Grants	7,331	\$24,854,727	
	Federal Loans	8,043	\$46,529,077	
	State Loans	193	\$1,148,869	
	Parental Loans	1,218	\$8,868,225	
	Other Aid	2,960	\$9,752,693	
	Total	12,762	\$132,863,397	
	UNCA	Federal Grants	708	\$2,561,440
		State Grants	1,081	\$3,089,126
Institutional Grants		1,079	\$2,260,878	
Federal Loans		1,166	\$6,015,539	
UNC-CH	State Loans	105	\$573,876	
	Parental Loans	91	\$616,681	
	Other Aid	6	\$32,400	
	Total	1,734	\$15,149,940	
	Federal Grants	2,479	\$9,388,994	
	State Grants	4,071	\$15,093,797	
UNCC	Institutional Grants	4,775	\$19,605,403	
	Federal Loans	3,487	\$17,188,838	
	State Loans	301	\$1,653,291	
	Parental Loans	573	\$4,672,663	
	Other Aid	2,812	\$11,734,791	
	Total	8,534	\$79,337,777	
UNCG	Federal Grants	4,609	\$17,935,282	
	State Grants	6,357	\$18,274,271	
	Institutional Grants	4,181	\$6,269,796	
	Federal Loans	7,782	\$47,746,158	
	State Loans	297	\$1,419,575	
	Parental Loans	506	\$3,293,320	
UNC	Other Aid	1,524	\$5,253,834	
	Total	10,566	\$100,192,236	
	Federal Grants	4,078	\$14,938,898	
	State Grants	5,750	\$17,390,934	
	Institutional Grants	4,337	\$7,853,007	
	Federal Loans	6,458	\$37,395,250	
UNCP	State Loans	589	\$3,049,859	
	Parental Loans	967	\$6,465,069	
	Other Aid	1,106	\$1,896,974	
	Total	8,727	\$88,989,991	
	Federal Grants	2,447	\$9,806,128	
	State Grants	2,873	\$8,309,224	
UNCW	Institutional Grants	985	\$1,373,992	
	Federal Loans	3,160	\$16,182,416	
	State Loans	62	\$370,659	
	Parental Loans	141	\$807,035	
	Other Aid	364	\$1,227,944	
	Total	4,050	\$38,077,398	

UNCSA	Federal Grants	1,895	\$7,416,272	
	State Grants	2,946	\$9,018,569	
	Institutional Grants	2,559	\$5,642,887	
	Federal Loans	4,027	\$23,000,266	
	State Loans	291	\$1,497,806	
	Parental Loans	869	\$6,144,091	
	Other Aid	935	\$2,900,176	
	Total	5,771	\$55,620,067	
	WCU	Federal Grants	89	\$254,988
		State Grants	145	\$356,850
Institutional Grants		212	\$456,653	
Federal Loans		183	\$602,722	
WSSU	Parental Loans	38	\$187,470	
	Other Aid	44	\$109,235	
	Total	268	\$1,967,918	
	Federal Grants	1,719	\$6,632,146	
	State Grants	2,720	\$8,864,762	
	Institutional Grants	2,824	\$3,162,022	
UNC Total	Federal Loans	2,920	\$15,820,542	
	State Loans	321	\$1,497,635	
	Parental Loans	630	\$3,384,645	
	Other Aid	815	\$2,275,714	
	Total	4,405	\$41,637,466	
	Federal Grants	2,952	\$11,955,773	
UNC Total	State Grants	3,540	\$8,408,918	
	Institutional Grants	346	\$1,315,989	
	Federal Loans	3,683	\$23,423,239	
	State Loans	91	\$442,450	
	Parental Loans	219	\$1,343,391	
	Other Aid	492	\$1,192,691	
UNC Total	Total	4,396	\$48,082,451	
	Federal Grants	43,256	\$171,714,054	
	State Grants	59,317	\$176,914,592	
	Institutional Grants	45,185	\$102,506,914	
	Federal Loans	67,080	\$377,766,276	
	State Loans	4,236	\$18,647,246	
UNC Total	Parental Loans	9,120	\$61,191,461	
	Other Aid	15,986	\$53,978,882	
	Total	96,945	\$962,719,425	

Source: FAF. ER002B

- Notes: 1. Students are counted in each category of aid received. Therefore the number of students is unduplicated in each aid category but duplicated across aid categories. The number of students in "Total" is unduplicated.
2. Consistent with IPEDS reporting, undergraduate students include post-baccalaureate degree students.
3. The "Other Aid" category includes institutional loans. In 2008-09 awards were made to 21 students.
4. Federal Work Study, federal waivers, state waivers, tuition remission, and all aid coded in the category "Other Programs" are reported as "Other Aid."

TABLE 5.2. PERCENT OF UNC IN-STATE UNDERGRADUATES RECEIVING FINANCIAL AID BY TYPE AND INSTITUTION, FALL 2008

Types of Aid	ASU	ECU	ECSU	FSU	NCA&T	NCCU	NCSU	UNCA	UNC-CH	UNCC	UNCG	UNCP	UNCW	UNCSA	WCU	WSSU	TOTAL
Any aid	61.9	60.0	90.3	80.8	84.5	92.1	59.4	61.7	58.6	63.3	68.3	80.3	61.1	79.5	68.7	80.9	66.5
Any need-based aid	40.5	44.2	81.2	74.1	67.3	83.1	37.3	45.5	31.9	48.5	53.4	69.7	42.4	54.2	49.2	71.6	49.0
Any non-need-based aid	49.7	45.4	49.8	71.9	67.0	70.7	49.2	43.4	44.5	45.1	50.6	53.0	47.2	68.5	55.5	70.0	51.3
Federal																	
Pell grants	18.8	24.6	66.1	59.8	49.4	61.5	17.1	25.2	14.9	27.3	31.4	47.0	19.6	25.6	26.3	51.3	28.8
Grants/scholarships (non-Pell)	8.1	6.2	16.7	28.0	22.8	21.6	8.4	9.8	8.1	11.4	11.1	15.4	7.6	14.0	8.3	19.8	11.2
Loan (need-based)	24.4	31.1	43.1	52.5	53.1	67.2	20.8	27.4	10.2	33.4	36.5	49.9	28.2	34.8	27.8	59.1	32.1
Loan (non-need-based)	31.5	34.5	22.4	45.8	49.1	52.9	32.3	30.7	17.8	35.6	36.9	35.5	34.0	38.4	37.2	50.3	34.7
PLUS loans (parent)	13.4	6.3	1.4	0.7	5.0	9.7	5.6	3.2	3.8	3.0	7.5	2.8	9.3	11.3	9.8	4.0	6.2
College work study	1.9	1.0	2.5	4.2	0.0	5.9	1.5	2.3	5.6	1.7	2.1	3.7	2.0	7.1	5.3	2.4	2.5
State																	
Grants/scholarships	35.6	34.4	74.7	58.5	57.5	66.1	32.3	38.7	28.2	38.0	45.0	56.7	31.4	43.2	42.5	65.4	40.8
Loan (need-based)	0.0	<0.1	1.2	0.3	0.1	0.5	0.0	0.0	<0.1	<0.1	<0.1	0.0	0.0	0.0	0.1	1.2	0.1
Loan (non-need-based)	5.2	2.8	1.4	0.2	0.3	13.0	0.9	3.7	2.0	1.8	4.6	1.2	3.1	0.0	5.0	0.5	2.8
Waivers	0.0	0.0	0.0	0.3	0.6	0.0	0.2	0.0	<0.1	0.3	0.8	0.0	0.0	0.3	0.0	0.0	0.2
Institutional																	
Grants/scholarships	28.6	21.6	39.1	53.6	33.0	55.2	33.8	38.3	32.6	24.5	33.4	18.3	26.5	61.9	44.1	6.0	30.6
Loan (need-based)	0.0	0.0	0.0	0.0	0.0	0.0	0.0	0.0	0.0	0.0	0.0	0.0	0.0	0.0	0.1	0.0	<0.1
Loan (non-need-based)	0.0	0.0	0.0	0.0	0.0	0.0	0.0	0.0	<0.1	<0.1	0.1	0.0	0.0	0.0	0.0	0.0	<0.1
Waivers	0.0	0.0	0.0	0.0	0.0	0.0	<0.1	0.0	0.0	<0.1	0.0	0.0	0.0	0.0	0.0	0.0	<0.1
Other																	
Grants/Scholarships	5.2	2.4	1.0	0.3	3.2	1.7	4.9	0.0	9.0	2.4	3.7	2.8	5.4	2.1	4.1	1.7	3.9
Loan (need-based)	0.0	0.0	0.0	0.0	0.0	0.0	0.0	0.0	0.0	0.0	0.0	0.0	0.0	0.0	0.0	0.0	0.0
Loan (non-need-based)	5.5	7.4	1.0	0.2	5.9	4.0	1.5	2.4	5.3	1.5	3.8	2.7	3.3	1.8	2.1	5.3	3.8
Waivers	0.0	0.0	0.0	0.0	0.0	0.0	0.0	0.0	0.0	0.0	0.0	0.0	0.0	0.0	0.0	0.0	0.0

Source: FAF QR036

Notes: 1. In-state undergraduate students who enrolled in the fall term are included.

2. Consistent with IPEDS reporting, undergraduate students include post-baccalaureate degree students.

**TABLE 5.3. AVERAGE COST, PARENTAL INCOME, EFC, GRANTS/SCHOLARSHIPS, NEED, AND LOAN FOR UNC IN-STATE FULL-TIME DEPENDENT DEGREE-SEEKING UNDERGRADUATE STUDENTS WHO ENROLLED IN BOTH FALL AND SPRING SEMESTERS AND RECEIVED AID IN FALL AND/OR SPRING, 2008-09**

Institution	N*	\$0 – \$30,000			\$30,001 – \$48,000			\$48,001 – \$75,000			\$75,001 – \$110,000			\$110,001 and More		
		Number	Average	Number	Average	Number	Average	Number	Average	Number	Average	Number	Average	Number	Average	
ASU	10,951	<b>COA</b>	<b>724</b>	<b>\$13,933</b>	<b>925</b>	<b>\$13,933</b>	<b>1,394</b>	<b>\$13,933</b>	<b>1,403</b>	<b>\$13,933</b>	<b>1,403</b>	<b>\$13,933</b>	<b>1,119</b>	<b>\$13,933</b>		
		Parental Income	724	\$17,742	925	\$38,916	1,394	\$61,583	1,403	\$91,424	1,119	\$152,250				
		EFC	724	\$1,149	925	\$3,073	1,394	\$7,686	1,402	\$15,638	1,117	\$31,916				
		Grants/Scholarships	709	\$8,826	910	\$7,431	1,342	\$4,509	676	\$1,963	164	\$3,222				
		Need (COA-EFC)	724	\$13,040	925	\$10,960	1,394	\$6,764	1,402	\$1,904	1,117	\$266				
		<b>Net Cost (COA-Grants/Scholarships)</b>	<b>724</b>	<b>\$5,314</b>	<b>925</b>	<b>\$6,629</b>	<b>1,394</b>	<b>\$9,592</b>	<b>1,403</b>	<b>\$12,987</b>	<b>1,119</b>	<b>\$13,460</b>				
		Remaining Need (COA-EFC-Grants/Scholarships)	724	\$4,440	925	\$3,759	1,394	\$2,709	1,402	\$234	1,117	\$234				
		Loans	504	\$4,214	609	\$4,708	1,036	\$5,081	1,220	\$5,710	986	\$5,547				
		<b>COA</b>	<b>1,537</b>	<b>\$15,636</b>	<b>1,263</b>	<b>\$15,636</b>	<b>1,590</b>	<b>\$15,636</b>	<b>1,544</b>	<b>\$15,636</b>	<b>1,148</b>	<b>\$15,636</b>				
		Parental Income	1,537	\$15,156	1,263	\$39,059	1,590	\$61,319	1,544	\$90,931	1,148	\$150,547				
EFC	1,537	\$625	1,261	\$3,027	1,589	\$7,231	1,544	\$15,269	1,147	\$30,693						
Grants/Scholarships	1,519	\$10,478	1,242	\$8,550	1,529	\$4,852	659	\$1,994	119	\$3,217						
Need (COA-EFC)	1,537	\$15,048	1,261	\$12,740	1,589	\$8,704	1,544	\$2,815	1,147	\$596						
<b>Net Cost (COA-Grants/Scholarships)</b>	<b>1,537</b>	<b>\$5,299</b>	<b>1,263</b>	<b>\$7,232</b>	<b>1,590</b>	<b>\$10,969</b>	<b>1,544</b>	<b>\$14,784</b>	<b>1,148</b>	<b>\$15,302</b>						
Remaining Need (COA-EFC-Grants/Scholarships)	1,537	\$4,728	1,261	\$4,410	1,589	\$4,239	1,544	\$2,218	1,147	\$535						
Loans	1,015	\$4,723	904	\$5,067	1,278	\$6,043	1,420	\$7,170	1,095	\$7,024						
ECSU	1,867	<b>COA</b>	<b>690</b>	<b>\$11,342</b>	<b>309</b>	<b>\$11,342</b>	<b>228</b>	<b>\$11,342</b>	<b>149</b>	<b>\$11,342</b>	<b>149</b>	<b>\$11,342</b>	<b>49</b>	<b>\$11,342</b>		
		Parental Income	690	\$13,407	309	\$37,314	228	\$59,842	149	\$88,807	49	\$144,646				
		EFC	690	\$213	309	\$1,803	228	\$6,068	149	\$13,457	49	\$31,451				
		Grants/Scholarships	690	\$7,426	307	\$6,883	223	\$5,273	106	\$4,361	30	\$5,170				
		Need (COA-EFC)	690	\$11,128	309	\$9,556	228	\$5,512	149	\$1,413	49	\$96				
		<b>Net Cost (COA-Grants/Scholarships)</b>	<b>690</b>	<b>\$3,926</b>	<b>309</b>	<b>\$4,517</b>	<b>228</b>	<b>\$6,187</b>	<b>149</b>	<b>\$8,239</b>	<b>49</b>	<b>\$8,176</b>				
		Remaining Need (COA-EFC-Grants/Scholarships)	690	\$3,725	307	\$2,926	228	\$1,576	149	\$615	49	\$48				
		Loans	399	\$3,610	170	\$4,354	116	\$5,253	93	\$5,766	26	\$6,346				
		<b>COA</b>	<b>911</b>	<b>\$13,330</b>	<b>379</b>	<b>\$13,330</b>	<b>278</b>	<b>\$13,330</b>	<b>168</b>	<b>\$13,330</b>	<b>51</b>	<b>\$13,330</b>				
		Parental Income	911	\$13,265	379	\$37,498	278	\$60,279	168	\$89,112	51	\$137,326				
EFC	911	\$393	379	\$1,908	278	\$5,803	168	\$13,270	51	\$27,314						
Grants/Scholarships	909	\$7,326	379	\$6,445	275	\$3,923	121	\$1,491	34	\$884						
Need (COA-EFC)	911	\$12,943	379	\$11,471	278	\$7,626	168	\$2,737	51	\$103						
<b>Net Cost (COA-Grants/Scholarships)</b>	<b>911</b>	<b>\$6,035</b>	<b>379</b>	<b>\$6,884</b>	<b>278</b>	<b>\$9,448</b>	<b>168</b>	<b>\$12,255</b>	<b>51</b>	<b>\$12,740</b>						
Remaining Need (COA-EFC-Grants/Scholarships)	911	\$5,657	379	\$5,042	278	\$3,819	168	\$2,047	51	\$73						
Loans	613	\$4,745	269	\$4,793	216	\$5,616	132	\$5,883	37	\$5,930						
NCA&T	5,163	<b>COA</b>	<b>1,530</b>	<b>\$14,172</b>	<b>940</b>	<b>\$14,172</b>	<b>669</b>	<b>\$14,172</b>	<b>505</b>	<b>\$14,172</b>	<b>505</b>	<b>\$14,172</b>	<b>272</b>	<b>\$14,172</b>		
		Parental Income	1,530	\$15,104	940	\$37,717	669	\$60,197	505	\$90,325	272	\$150,899				
		EFC	1,530	\$513	940	\$2,374	669	\$6,552	505	\$15,291	272	\$30,490				
		Grants/Scholarships	1,502	\$7,881	912	\$7,081	600	\$4,516	208	\$3,341	69	\$5,365				
		Need (COA-EFC)	1,530	\$13,676	940	\$11,802	669	\$7,697	505	\$1,964	272	\$359				
		<b>Net Cost (COA-Grants/Scholarships)</b>	<b>1,530</b>	<b>\$6,449</b>	<b>940</b>	<b>\$7,303</b>	<b>669</b>	<b>\$10,153</b>	<b>505</b>	<b>\$12,801</b>	<b>272</b>	<b>\$12,810</b>				
		Remaining Need (COA-EFC-Grants/Scholarships)	1,530	\$5,976	940	\$5,003	669	\$3,952	505	\$1,467	272	\$306				
		Loans	1,205	\$5,063	750	\$5,448	588	\$6,586	456	\$7,407	228	\$7,071				
		<b>COA</b>	<b>1,161</b>	<b>\$15,786</b>	<b>604</b>	<b>\$15,786</b>	<b>401</b>	<b>\$15,786</b>	<b>257</b>	<b>\$15,786</b>	<b>129</b>	<b>\$15,786</b>				
		Parental Income	1,161	\$14,320	604	\$37,616	401	\$59,610	257	\$90,155	129	\$160,389				
EFC	1,160	\$431	603	\$2,170	401	\$6,097	255	\$14,637	128	\$30,173						
Grants/Scholarships	1,157	\$9,661	601	\$7,783	391	\$4,811	145	\$3,972	53	\$8,105						
Need (COA-EFC)	1,160	\$15,376	603	\$13,624	401	\$9,832	255	\$3,507	128	\$950						
<b>Net Cost (COA-Grants/Scholarships)</b>	<b>1,161</b>	<b>\$6,170</b>	<b>604</b>	<b>\$8,041</b>	<b>401</b>	<b>\$11,103</b>	<b>257</b>	<b>\$13,544</b>	<b>129</b>	<b>\$12,456</b>						
Remaining Need (COA-EFC-Grants/Scholarships)	1,160	\$5,763	603	\$5,900	401	\$2,575	255	\$2,510	128	\$621						
Loans	905	\$4,366	503	\$4,874	333	\$5,501	221	\$5,693	93	\$5,260						
NCCU	3,543	<b>COA</b>	<b>1,161</b>	<b>\$15,786</b>	<b>604</b>	<b>\$15,786</b>	<b>401</b>	<b>\$15,786</b>	<b>257</b>	<b>\$15,786</b>	<b>129</b>	<b>\$15,786</b>	<b>129</b>	<b>\$15,786</b>		
		Parental Income	1,161	\$14,320	604	\$37,616	401	\$59,610	257	\$90,155	129	\$160,389				
		EFC	1,160	\$431	603	\$2,170	401	\$6,097	255	\$14,637	128	\$30,173				
		Grants/Scholarships	1,157	\$9,661	601	\$7,783	391	\$4,811	145	\$3,972	53	\$8,105				
		Need (COA-EFC)	1,160	\$15,376	603	\$13,624	401	\$9,832	255	\$3,507	128	\$950				
		<b>Net Cost (COA-Grants/Scholarships)</b>	<b>1,161</b>	<b>\$6,170</b>	<b>604</b>	<b>\$8,041</b>	<b>401</b>	<b>\$11,103</b>	<b>257</b>	<b>\$13,544</b>	<b>129</b>	<b>\$12,456</b>				
		Remaining Need (COA-EFC-Grants/Scholarships)	1,160	\$5,763	603	\$5,900	401	\$2,575	255	\$2,510	128	\$621				
		Loans	905	\$4,366	503	\$4,874	333	\$5,501	221	\$5,693	93	\$5,260				

Institution	N*	\$0 - \$30,000	\$30,001 - \$48,000	\$48,001 - \$75,000	\$75,001 - \$110,000	\$110,001 and More						
		Number	Average	Number	Average	Number	Average					
NCSU	17,444	COA	1,292	\$16,028	1,344	\$16,028	1,981	\$16,028	2,129	\$16,028	1,903	\$16,028
		Parental Income	1,292	\$12,841	1,344	\$38,898	1,981	\$61,408	1,981	\$91,515	1,903	\$157,699
		EFC	1,292	\$701	1,344	\$3,103	1,981	\$7,868	1,981	\$16,202	1,903	\$33,809
		Grants/Scholarships	1,284	\$12,259	1,333	\$10,111	1,918	\$6,406	1,403	\$3,552	491	\$3,649
		Need (COA-EFC)	1,292	\$15,401	1,344	\$12,979	1,981	\$8,549	2,129	\$2,922	1,903	\$452
		Net Cost (COA-Grants/Scholarships)	1,292	\$3,995	1,344	\$6,124	1,981	\$9,864	2,129	\$13,731	1,903	\$15,109
		Remaining Need (COA-EFC-Grants/Scholarships)	1,292	\$3,384	1,344	\$3,214	1,981	\$2,711	2,129	\$1,330	1,903	\$280
		Loans	674	\$3,494	888	\$4,826	1,457	\$6,207	1,738	\$6,991	1,589	\$7,003
		COA	168	\$14,630	180	\$14,630	251	\$14,630	227	\$14,630	155	\$14,630
		Parental Income	168	\$18,461	180	\$39,100	251	\$61,147	227	\$92,046	155	\$146,214
EFC	168	\$694	180	\$3,187	251	\$7,332	227	\$15,829	154	\$31,063		
Grants/Scholarships	168	\$9,762	180	\$7,534	247	\$5,040	137	\$2,245	57	\$2,181		
Need (COA-EFC)	168	\$13,961	180	\$11,602	251	\$7,557	227	\$2,019	154	\$538		
Net Cost (COA-Grants/Scholarships)	168	\$4,927	180	\$7,100	251	\$9,669	227	\$13,274	155	\$13,827		
Remaining Need (COA-EFC-Grants/Scholarships)	168	\$4,283	180	\$4,136	251	\$2,831	227	\$1,199	154	\$332		
Loans	94	\$3,976	106	\$4,254	175	\$4,479	195	\$5,174	136	\$5,198		
COA	863	\$16,370	814	\$16,370	1,223	\$16,370	1,223	\$16,370	1,432	\$16,370		
Parental Income	863	\$18,028	814	\$38,833	1,223	\$61,170	1,223	\$92,023	1,432	\$161,263		
EFC	850	\$645	811	\$3,135	1,209	\$7,817	1,289	\$15,608	1,395	\$35,615		
Grants/Scholarships	856	\$12,766	803	\$10,428	1,181	\$6,915	950	\$4,009	439	\$3,669		
Need (COA-EFC)	850	\$15,794	811	\$13,487	1,209	\$9,132	1,289	\$3,214	1,395	\$469		
Net Cost (COA-Grants/Scholarships)	863	\$3,846	814	\$6,125	1,223	\$9,697	1,315	\$13,474	1,432	\$15,245		
Remaining Need (COA-EFC-Grants/Scholarships)	850	\$3,148	811	\$3,329	1,209	\$2,699	1,289	\$972	1,395	\$169		
Loans	191	\$3,464	317	\$3,718	644	\$4,659	773	\$5,995	928	\$5,916		
COA	1,370	\$15,050	1,154	\$15,050	1,478	\$15,050	1,292	\$15,050	937	\$15,050		
Parental Income	1,370	\$16,344	1,154	\$38,691	1,478	\$61,208	1,292	\$90,972	937	\$153,272		
EFC	1,358	\$637	1,153	\$2,805	1,478	\$7,207	1,290	\$15,547	937	\$32,659		
Grants/Scholarships	1,356	\$8,797	1,143	\$7,616	1,422	\$4,666	660	\$1,698	107	\$2,515		
Need (COA-EFC)	1,358	\$14,436	1,153	\$12,335	1,478	\$8,040	1,290	\$2,473	937	\$260		
Net Cost (COA-Grants/Scholarships)	1,370	\$6,366	1,154	\$7,516	1,478	\$10,560	1,292	\$14,185	937	\$14,762		
Remaining Need (COA-EFC-Grants/Scholarships)	1,358	\$5,749	1,153	\$4,840	1,478	\$3,715	1,290	\$1,796	937	\$219		
Loans	871	\$4,797	753	\$4,950	1,125	\$5,640	1,160	\$6,457	885	\$6,488		
COA	1,283	\$13,524	1,127	\$13,524	1,354	\$13,524	1,119	\$13,524	690	\$13,524		
Parental Income	1,283	\$19,125	1,127	\$38,313	1,354	\$61,124	1,119	\$90,164	690	\$150,336		
EFC	1,283	\$469	1,127	\$2,758	1,354	\$7,282	1,118	\$15,825	689	\$32,559		
Grants/Scholarships	1,273	\$9,968	1,113	\$8,021	1,300	\$4,406	555	\$1,795	104	\$3,040		
Need (COA-EFC)	1,283	\$13,070	1,127	\$10,851	1,354	\$6,502	1,118	\$1,624	689	\$168		
Net Cost (COA-Grants/Scholarships)	1,283	\$3,838	1,127	\$5,656	1,354	\$9,294	1,119	\$12,633	690	\$13,065		
Remaining Need (COA-EFC-Grants/Scholarships)	1,283	\$3,425	1,127	\$3,132	1,354	\$2,580	1,118	\$1,169	689	\$145		
Loans	813	\$4,949	795	\$5,384	1,050	\$5,909	990	\$6,327	637	\$6,211		
COA	688	\$14,500	396	\$14,500	565	\$14,500	357	\$14,500	202	\$14,500		
Parental Income	688	\$15,582	396	\$37,759	565	\$61,261	357	\$89,832	202	\$151,231		
EFC	688	\$491	396	\$2,179	565	\$6,408	357	\$15,720	202	\$28,822		
Grants/Scholarships	683	\$9,026	395	\$7,625	552	\$4,723	198	\$2,593	68	\$3,368		
Need (COA-EFC)	688	\$14,106	396	\$12,355	565	\$8,297	357	\$2,413	202	\$451		
Net Cost (COA-Grants/Scholarships)	688	\$5,543	396	\$6,895	565	\$9,885	357	\$13,061	202	\$13,366		
Remaining Need (COA-EFC-Grants/Scholarships)	688	\$5,160	396	\$4,825	565	\$3,905	357	\$1,592	202	\$374		
Loans	474	\$4,545	304	\$4,928	463	\$5,287	301	\$5,699	182	\$5,222		
COA	527	\$15,251	504	\$15,251	916	\$15,251	860	\$15,251	804	\$15,251		
Parental Income	527	\$15,190	504	\$38,821	916	\$62,104	860	\$91,725	804	\$158,013		
EFC	527	\$769	504	\$3,390	916	\$8,290	860	\$16,101	804	\$34,591		
Grants/Scholarships	521	\$10,058	490	\$7,891	868	\$4,463	477	\$1,792	149	\$2,187		
Need (COA-EFC)	527	\$14,512	504	\$11,989	916	\$7,589	860	\$2,456	804	\$388		
Net Cost (COA-Grants/Scholarships)	527	\$5,323	504	\$7,590	916	\$11,021	860	\$14,256	804	\$14,845		
Remaining Need (COA-EFC-Grants/Scholarships)	527	\$4,590	504	\$4,432	916	\$3,556	860	\$1,797	804	\$321		
Loans	324	\$4,503	339	\$5,050	692	\$5,557	737	\$6,226	711	\$6,030		

Institution	N*		\$0 – \$30,000		\$30,001 – \$48,000		\$48,001 – \$75,000		\$75,001 – \$110,000		\$110,001 and More	
			Number	Average	Number	Average	Number	Average	Number	Average	Number	Average
UNCSA	308	COA	29	\$15,377	27	\$15,377	40	\$15,377	58	\$15,377	29	\$15,377
		Parental Income	29	\$18,653	27	\$38,490	40	\$59,782	58	\$93,813	29	\$160,344
		EFC	29	\$497	27	\$2,742	40	\$7,077	58	\$16,190	29	\$31,283
		Grants/Scholarships	29	\$8,428	27	\$6,958	39	\$4,350	44	\$1,578	10	\$2,251
		Need (COA-EFC)	29	\$14,879	27	\$12,634	40	\$8,315	58	\$2,309	29	\$313
		<b>Net Cost (COA-Grants/Scholarships)</b>	29	<b>\$6,948</b>	27	<b>\$8,418</b>	40	<b>\$11,135</b>	58	<b>\$14,179</b>	29	<b>\$14,600</b>
		Remaining Need (COA-EFC-Grants/Scholarships)	29	\$6,451	27	\$5,675	40	\$4,200	58	\$1,616	29	\$181
		Loans	16	\$2,974	20	\$2,998	28	\$3,442	54	\$4,213	24	\$4,144
		COA	523	\$12,773	500	\$12,773	757	\$12,773	646	\$12,773	400	\$12,773
		Parental Income	523	\$16,477	500	\$38,820	757	\$61,216	646	\$90,479	400	\$150,292
EFC	521	\$502	499	\$2,803	754	\$7,729	645	\$16,197	399	\$32,392		
Grants/Scholarships	522	\$9,652	496	\$7,847	738	\$4,764	427	\$1,839	150	\$2,191		
Need (COA-EFC)	521	\$12,356	499	\$10,053	754	\$5,705	645	\$1,215	399	\$146		
<b>Net Cost (COA-Grants/Scholarships)</b>	523	<b>\$3,419</b>	500	<b>\$5,079</b>	757	<b>\$8,140</b>	646	<b>\$11,557</b>	400	<b>\$11,968</b>		
Remaining Need (COA-EFC-Grants/Scholarships)	521	\$3,044	499	\$2,560	754	\$1,597	645	\$697	399	\$103		
Loans	301	\$3,543	339	\$4,324	546	\$5,218	541	\$5,864	323	\$6,230		
WSSU	4,001	COA	1,168	\$15,278	653	\$15,278	467	\$15,278	327	\$15,278	171	\$15,278
		Parental Income	1,168	\$15,965	653	\$37,649	467	\$60,435	327	\$89,443	171	\$145,221
		EFC	1,164	\$475	653	\$2,398	466	\$6,736	327	\$15,118	170	\$32,730
		Grants/Scholarships	1,159	\$7,292	647	\$6,722	447	\$4,351	154	\$3,598	54	\$6,658
		Need (COA-EFC)	1,164	\$14,824	653	\$12,918	466	\$8,662	327	\$2,796	170	\$3,559
		<b>Net Cost (COA-Grants/Scholarships)</b>	1,168	<b>\$8,047</b>	653	<b>\$8,625</b>	467	<b>\$11,112</b>	327	<b>\$13,583</b>	171	<b>\$13,175</b>
		Remaining Need (COA-EFC-Grants/Scholarships)	1,164	\$7,592	653	\$6,360	466	\$4,772	327	\$2,056	170	\$135
		Loans	943	\$5,548	552	\$6,039	400	\$6,384	284	\$6,768	138	\$6,448
		COA	14,464	\$14,669	11,119	\$14,669	13,592	\$14,669	12,356	\$14,669	9,491	\$14,669
		Parental Income	14,464	\$15,619	11,119	\$38,453	13,592	\$61,169	12,356	\$91,042	9,491	\$154,594
EFC	14,432	\$568	11,111	\$2,765	13,573	\$7,359	12,323	\$15,656	9,446	\$32,904		
Grants/Scholarships	14,337	\$9,419	10,978	\$8,127	13,072	\$5,086	6,920	\$2,680	2,098	\$3,467		
Need (COA-EFC)	14,432	\$14,157	11,111	\$12,102	13,573	\$7,854	12,323	\$2,451	9,446	\$391		
<b>Net Cost (COA-Grants/Scholarships)</b>	14,464	<b>\$5,406</b>	11,119	<b>\$6,789</b>	13,592	<b>\$9,976</b>	12,356	<b>\$13,464</b>	9,491	<b>\$14,376</b>		
Remaining Need (COA-EFC-Grants/Scholarships)	14,432	\$4,891	11,111	\$4,204	13,573	\$3,255	12,323	\$1,502	9,446	\$272		
Loans	9,342	\$4,589	7,618	\$4,989	10,147	\$5,685	10,315	\$6,424	8,018	\$6,349		

Source: FAF, QR035

Notes: 1. "N\*" = Number of students who were in-state, full-time, degree-seeking undergraduates in both fall and spring semesters.

2. COA (Cost of Attendance) includes tuition and fees, room and board, books/supplies, travel, and other expenses.

3. Parental Income and Expected Family Contribution (EFC) are obtained from the FAFSA.

4. Parental Income ranges shown are based on IPEDS income ranges.

5. Grants/Scholarships include federal, state, and institutional grants and scholarships reported on the student financial aid file.

6. Need, Net Cost, and Remaining Need are calculated as follows: Need=COA minus EFC; Net Cost=COA minus Grants/Scholarships; Remaining Need=COA minus EFC minus Grants/Scholarships.

7. All loans awarded to students are included. Loans to parents are excluded.

**TABLE 5.4. AVERAGE ACCUMULATED INDEBTEDNESS OF UNC IN-STATE GRADUATING SENIORS – STUDENT LOANS, 2007-08 AND 2008-09**

Institution	Academic Year of Graduation											
	2007-08						2008-09					
	Number of Graduating Seniors	Number of Students Receiving Loans	Percent of Students Receiving Loans	Average Loan Amount	Average # of Registered Semester to Graduate	Average # Semesters in Loans	Number of Graduating Seniors	Number of Students Receiving Loans	Percent of Students Receiving Loans	Average Loan Amount	Average # of Registered Semester to Graduate	Average # Semesters in Loans
ASU	1,592	835	52.4%	\$16,109	8.7	6.7	1,736	916	52.8%	\$15,870	8.7	6.6
ECU	1,683	1,080	64.2%	\$19,239	9.0	7.2	1,791	1,116	62.3%	\$19,987	9.0	7.3
ECSU	187	156	83.4%	\$11,182	8.9	5.8	212	157	74.1%	\$14,538	9.3	6.9
FSU	253	219	86.6%	\$13,164	9.7	6.3	246	209	85.0%	\$16,228	9.7	7.1
NCA&T	567	508	89.6%	\$20,825	9.4	7.9	645	566	87.8%	\$21,553	9.5	8.1
NCCU	423	377	89.1%	\$19,781	9.3	8.4	396	362	91.4%	\$20,389	9.5	8.4
NCSU	2,740	1,301	47.5%	\$15,670	9.0	6.7	2,853	1,361	47.7%	\$16,431	9.0	6.6
UNCA	338	166	49.1%	\$14,061	9.0	6.8	277	137	49.5%	\$14,426	9.0	6.7
UNC-CH	2,658	935	35.2%	\$13,581	8.1	5.8	2,778	929	33.4%	\$13,211	8.2	5.7
UNCC	1,376	808	58.7%	\$16,175	9.1	7.0	1,484	844	56.9%	\$17,385	9.2	7.2
UNCG	1,122	696	62.0%	\$17,737	8.9	6.9	1,140	727	63.8%	\$19,432	8.9	7.2
UNCP	279	211	75.6%	\$18,383	9.4	7.5	322	263	81.7%	\$19,085	9.2	7.4
UNCW	1,116	615	55.1%	\$15,013	8.5	6.7	1,074	597	55.6%	\$14,793	8.6	6.4
UNCSA	45	34	75.6%	\$10,240	8.2	6.6	39	24	61.5%	\$11,750	8.5	7.2
WCU	721	451	62.6%	\$15,324	8.6	7.0	795	511	64.3%	\$15,376	8.9	6.9
WSSU	297	253	85.2%	\$19,626	9.6	7.2	352	319	90.6%	\$21,763	9.5	7.9
<b>UNC Total</b>	<b>15,397</b>	<b>8,645</b>	<b>56.1%</b>	<b>\$16,548</b>	<b>8.9</b>	<b>6.9</b>	<b>16,140</b>	<b>9,038</b>	<b>56.0%</b>	<b>\$17,309</b>	<b>9.0</b>	<b>7.0</b>

Source: FAF.PR008B

Notes: 1. In-state graduating seniors who initially enrolled in the fall or spring as first-time, full-time, in-state freshmen are included.

2. Due to the availability of financial aid data, students enrolled as freshmen prior to fall 1997 are excluded.

3. Degree Intent of four-year diploma (UNCSA) and bachelor's degree are included.

4. No summer term or winter term is included.

5. Both independent and dependent students are included.

6. The following student loan programs are included: Federal Perkins Loan, Federal Family Education Loan Program (FFELP)-Subsidized Stafford, FFELP-Unsubsidized Stafford, Federal Ford Direct Loan Program (FDLP)-Subsidized Stafford, FDLP-Unsubsidized Stafford, Other federal loan, Other North Carolina loan, Other North Carolina scholarship/loan, Institutional loan (need based), Institutional loan (non-need based), Other Institutional Loan, and Alternative Loan.

TABLE 5.5. AVERAGE ACCUMULATED INDEBTEDNESS OF UNC IN-STATE DEPENDENT GRADUATING SENIORS, 2008-09

Institution	Number of Students Receiving Loans	\$0 – \$30,000			\$30,001 – \$48,000			\$48,001 – \$75,000			\$75,001 – %110,000			\$110,001 and more		
		Number of Students	Average Loan Amount	Number of Students	Average Loan Amount	Number of Students	Average Loan Amount	Number of Students	Average Loan Amount	Number of Students	Average Loan Amount	Number of Students	Average Loan Amount	Number of Students	Average Loan Amount	
ASU	847	109	\$14,226	106	\$16,437	183	\$16,968	241	\$18,390	208	\$16,021					
ECU	935	167	\$19,226	129	\$18,797	208	\$19,856	249	\$20,812	182	\$19,372					
ECSU	113	53	\$12,148	26	\$14,367	13	\$14,351	15	\$18,834	6	\$16,095					
FSU	134	64	\$15,136	24	\$13,372	22	\$16,544	15	\$18,705	9	\$13,411					
NCA&T	431	162	\$18,813	79	\$18,291	91	\$20,951	65	\$21,740	34	\$20,259					
NCCU	245	104	\$16,141	59	\$17,209	41	\$19,295	28	\$21,509	13	\$15,938					
NCSU	1,314	170	\$12,806	158	\$15,470	269	\$17,349	365	\$16,760	352	\$16,909					
UNCA	124	18	\$14,956	19	\$15,836	29	\$17,480	42	\$15,178	16	\$13,034					
UNC-CH	876	73	\$10,002	114	\$10,960	190	\$12,725	237	\$15,245	262	\$14,711					
UNCC	724	120	\$16,649	105	\$14,241	193	\$17,342	158	\$17,026	148	\$16,198					
UNCG	664	128	\$20,246	99	\$20,246	169	\$21,594	160	\$19,849	108	\$18,550					
UNCP	195	44	\$20,420	30	\$18,117	47	\$17,784	41	\$18,834	33	\$15,794					
UNCW	544	68	\$14,326	69	\$14,760	135	\$14,970	142	\$16,472	130	\$14,569					
UNCSA	19	5	\$6,391	4	\$9,439	4	\$7,685	6	\$15,077	.	.					
WCU	468	71	\$12,444	69	\$13,887	127	\$17,324	113	\$16,737	88	\$16,469					
WSSU	255	107	\$21,880	50	\$19,933	45	\$20,487	41	\$20,060	12	\$20,386					
UNC Total	7,888	1,463	\$16,402	1,140	\$16,115	1,766	\$17,600	1,918	\$17,905	1,601	\$16,550					

Source: FAF PR011

- Notes: 1. In-state graduating seniors who initially enrolled in the fall or spring as first-time, full-time, in-state freshmen are included.
- 2. Due to the availability of financial aid data, students enrolled as freshmen prior to fall 1997 are excluded.
- 3. Degree Intent of four-year diploma (UNCSA) and bachelor's degree are excluded.
- 4. No summer term or winter term aid is included.
- 5. Only students with dependency status of "Dependent" throughout their undergraduate tenure are included.
- 6. All loans awarded to students are included. Loans to parents are excluded.
- 7. The most recent non-missing parental income is used in income ranges.
- 8. UNC Total excludes students with missing parental income. (There were 49 of these in 2008-09.)

## VI. FACULTY

In 2009, there were approximately 15,000 faculty working on UNC campuses. The following table provides a breakdown of the faculty by campus and by

diversity. While there is wide variation by campus, the overall minority percentage is 20.6%.

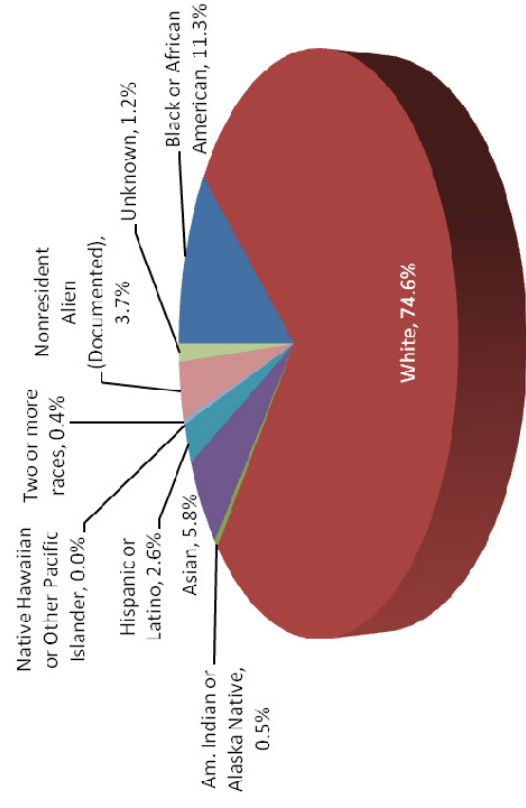
### 6.1. DIVERSITY

TABLE 6.1. DIVERSITY OF TOTAL UNC INSTRUCTIONAL FACULTY BY INSTITUTION, 2009

Institution	Black or African American		White		American Indian or Alaska Native		Asian		Hispanic or Latino		Native Hawaiian or Other Pacific Islander		Two or More Races		Nonresident Alien (Documented)		Unknown		Total	
	#	%	#	%	#	%	#	%	#	%	#	%	#	%	#	%	#	%	#	%
ASU	22	1.9%	1,049	90.6%	6	0.5%	14	1.2%	21	1.8%	0	0.0%	5	0.4%	30	2.6%	11	0.9%	1,158	100.0%
ECU	90	4.7%	1,579	82.2%	5	0.3%	90	4.7%	27	1.4%	1	0.1%	11	0.6%	84	4.4%	33	1.7%	1,920	100.0%
ECSU	141	57.1%	78	31.6%	1	0.4%	20	8.1%	4	1.6%	0	0.0%	0	0.0%	2	0.8%	1	0.4%	247	100.0%
FSU	147	45.8%	112	34.9%	1	0.3%	37	11.5%	7	2.2%	0	0.0%	0	0.0%	17	5.3%	0	0.0%	321	100.0%
NCA&T	385	56.0%	204	29.7%	6	0.9%	62	9.0%	8	1.2%	0	0.0%	0	0.0%	19	2.8%	3	0.4%	687	100.0%
NCCU	333	58.4%	170	29.8%	7	1.2%	44	7.7%	2	0.4%	0	0.0%	0	0.0%	14	2.5%	0	0.0%	570	100.0%
NCSU	79	3.8%	1,693	81.1%	4	0.2%	151	7.2%	56	2.7%	1	0.0%	9	0.4%	88	4.2%	7	0.3%	2,088	100.0%
UNCA	10	3.4%	260	87.8%	1	0.3%	10	3.4%	5	1.7%	0	0.0%	2	0.7%	8	2.7%	0	0.0%	296	100.0%
UNC-CH	144	4.3%	2,652	80.0%	12	0.4%	278	8.4%	97	2.9%	0	0.0%	0	0.0%	125	3.8%	5	0.2%	3,313	100.0%
UNCC	79	6.1%	979	75.5%	3	0.2%	86	6.6%	35	2.7%	0	0.0%	0	0.0%	73	5.6%	41	3.2%	1,296	100.0%
UNCG	62	5.9%	840	79.4%	0	0.0%	31	2.9%	71	6.7%	1	0.1%	6	0.6%	30	2.8%	17	1.6%	1,058	100.0%
UNCP	23	5.7%	307	75.8%	25	6.2%	14	3.5%	10	2.5%	0	0.0%	6	1.5%	19	4.7%	1	0.2%	405	100.0%
UNCW	40	4.8%	682	81.1%	0	0.0%	27	3.2%	34	4.0%	0	0.0%	12	1.4%	27	3.2%	19	2.3%	841	100.0%
UNCSA	1	0.6%	114	70.8%	1	0.6%	0	0.0%	3	1.9%	0	0.0%	2	1.2%	4	2.5%	36	22.4%	161	100.0%
WCU	4	0.6%	580	92.7%	3	0.5%	11	1.8%	9	1.4%	0	0.0%	1	0.2%	14	2.2%	4	0.6%	626	100.0%
WSSU	166	50.8%	122	37.3%	1	0.3%	13	4.0%	4	1.2%	0	0.0%	0	0.0%	17	5.2%	4	1.2%	327	100.0%
UNC Total	1,726	11.3%	11,421	74.6%	76	0.5%	888	5.8%	393	2.6%	3	0.0%	54	0.4%	571	3.7%	182	1.2%	15,314	100.0%

Source: PDF-BR065 Note: The data are based on IPEDS definition and include clinical employees.

FIGURE 6.1. DIVERSITY OF UNC INSTRUCTIONAL FACULTY, 2009



## 6.2 RESEARCH PRODUCTIVITY

While there are many measures of research productivity, the standard measure is the amount of funds received from external sources to support research. For 2008-09, UNC received \$1.1 billion for sponsored research. It is a testament to the strength of the faculty that UNC has moved above the billion-dollar threshold and remained

there. [Table 6.2B](#) shows sponsored research funding received by faculty member by campus and across the University. The average across the University is higher than the average faculty salary, and the same is true for some campuses.

TABLE 6.2A. SPONSORED PROGRAM ACTIVITY, FISCAL YEAR 2009

Constituent Institution	Proposals Submitted*		Awards Received**	
	Number	Dollars	Number	Dollars
<b>Doctoral Granting Universities</b>				
NCSU	3137	\$1,116,200,329	1938	\$206,143,934
UNC-CH	4355	\$2,740,162,488	4171	\$716,242,666
ECU	772	\$268,086,020	414	\$40,760,962
UNCC	706	\$229,143,352	390	\$36,581,079
NCA&T	344	\$189,168,141	211	\$57,704,040
UNCG	512	\$129,237,107	267	\$35,375,420
<b>Master's Colleges and Universities</b>				
ASU	282	\$33,394,782	228	\$14,576,504
FSU	72	\$31,487,441	44	\$12,484,562
NNCCU	156	\$96,935,329	86	\$20,171,627
UNCP	50	\$8,347,868	45	\$4,406,670
UNCW	216	\$68,376,561	212	\$19,394,782
WCU	105	\$21,884,820	89	\$5,790,853
WSSU	116	\$60,442,581	51	\$12,060,947
<b>Baccalaureate Colleges</b>				
UNCA	45	\$7,488,702	30	\$1,990,980
ECSU	81	\$55,557,742	55	\$9,572,683
<b>Special Focus Institutions</b>				
UNCSA	0	\$0	0	\$0
NCSSM	16	\$970,455	10	\$682,938
<b>System Office</b>				
UNC General Administration	18	\$11,270,340	15	\$7,275,240
<b>UNC Total</b>	<b>10,983</b>	<b>\$5,068,154,059</b>	<b>8,256</b>	<b>\$1,201,215,886</b>
Interinstitutional Subagreements	(422)	(\$65,654,930)	(380)	(\$24,722,734)
American Recovery & Reinvestment Act	(1110)	(\$757,223,409)	(47)	(\$12,235,412)
<b>UNC Adjusted Total</b>	<b>9,451</b>	<b>\$4,245,275,719</b>	<b>7,829</b>	<b>\$1,164,257,740</b>

\* Not all current-fiscal-year submissions are funded in the same fiscal year.

\*\* Some current-fiscal-year awards are to prior-fiscal-year submissions.

Note: UNC Adjusted Total does not include interinstitutional subagreements, internal proposals, or American Recovery and Reinvestment Act Funds.

TABLE 6.2B. UNC SPONSORED PROGRAM AWARDS RECEIVED PER FTE FACULTY BY INSTITUTION

Institution	Fiscal Year 2007			Fiscal Year 2008			Fiscal Year 2009		
	Fall 2006 FTE Faculty	\$ Amount of Awards Received	Average per FTE Faculty	Fall 2007 FTE Faculty	\$ Amount of Awards Received	Average per FTE Faculty	Fall 2008 FTE Faculty	\$ Amount of Awards Received	Average per FTE Faculty
ASU	665	\$13,393,296	\$20,140	729	\$15,180,288	\$20,823	761	\$14,576,504	\$19,154
ECU	1,618	\$38,559,802	\$23,832	1,669	\$44,938,680	\$26,926	1,759	\$40,760,962	\$23,173
ECSU	166	\$10,890,125	\$65,603	196	\$12,137,456	\$61,926	176	\$9,572,683	\$54,390
FSU	258	\$11,850,942	\$45,934	303	\$5,566,513	\$18,371	314	\$12,484,562	\$39,760
NCA&T	455	\$41,579,028	\$91,382	579	\$45,821,166	\$79,138	577	\$57,704,040	\$100,007
NCCU	263	\$23,970,084	\$91,141	387	\$9,838,198	\$25,422	395	\$20,171,627	\$51,067
NCSU	1,552	\$192,233,344	\$123,862	1,730	\$213,685,541	\$123,518	1,745	\$206,143,934	\$118,134
UNCA	204	\$4,752,222	\$23,295	205	\$4,563,395	\$22,260	206	\$1,990,980	\$9,665
UNC-CH	2,958	\$610,669,824	\$206,447	3,061	\$678,228,055	\$221,571	3,245	\$716,242,666	\$220,722
UNCC	899	\$33,241,988	\$36,977	881	\$35,622,382	\$40,434	937	\$36,581,079	\$39,041
UNCG	744	\$36,046,037	\$48,449	798	\$38,758,113	\$48,569	801	\$35,375,420	\$44,164
UNCP	268	\$3,103,789	\$11,581	289	\$4,162,121	\$14,402	314	\$4,406,670	\$14,034
UNCW	511	\$18,212,224	\$35,640	551	\$20,320,183	\$36,879	586	\$19,394,782	\$33,097
UNCSA	130	\$0	\$0	137	\$126,059	\$920	134	\$0	\$0
WCU	329	\$6,942,098	\$21,101	467	\$5,587,226	\$11,964	526	\$5,790,853	\$11,009
WSSU	266	\$14,017,862	\$52,699	331	\$8,976,921	\$27,121	347	\$12,060,947	\$34,758
UNC Total	11,285	\$1,059,462,665	\$93,882	12,313	\$1,143,512,297	\$92,870	12,823	\$1,193,257,709	\$93,056

Source: UNC Research and Sponsored Programs Report to the President & PDF.CH381.B

Notes: 1. Faculty are selected using EPA Type. Part-time faculty are those with FTE less than 0.75.

2. The amount of awards received does not include the awards received by UNC-GA or NCSM. The internal awards and interinstitutional subagreements are not excluded.

## VII. UTILIZATION OF FACILITIES

UNC tracks facilities and their use. [Table 7B](#) uses student clock hours of use in classroom and laboratory usage period defined as 8:00 a.m. through 9:00 p.m., relation to the assigned instructional and library facilities. A lower ratio indicates these tables show the percent of time that classroom or laboratory activities are greater use and a higher ratio indicates greater capacity for additional use. [Table 7C](#) records classroom usage and [Table 7D](#) records laboratory usage. With a scheduled in the rooms.

**TABLE 7A. ASSIGNABLE SQUARE FEET PER STUDENT AND FACULTY FTE, 2008**

Institutions	Fall 2008 Student FTE	2008 ASF Classrooms	Sq. Ft. per FTE Student	2008 ASF Instructional Labs	Sq. Ft. per FTE Student	2008 ASF Residential	Sq. Ft. per FTE Student	Fall 2008 Instructional FTE Faculty	2008 ASF Instructional Offices	Sq. Ft. per FTE Faculty
NCSU	28,985	262,393	9.1	306,083	10.6	1,387,481	47.9	1,948	379,309	194.7
NCSU Veterinary Medicine	312	7,248	23.2	8,262	26.5			(included above)		
UNC-CH	22,373	263,598	11.8	95,196	4.3	1,894,629	84.7	3,368	344,758	102.4
UNC-CH Health Affairs	3,983	64,647	16.2	54,956	13.8			(included above)		
ECU	22,485	182,668	8.1	162,819	7.2	817,322	36.4	1,893	366,785	193.8
ECU Health Affairs	2,044	36,218	17.7	28,837	14.1			(included above)		
NCA&T	9,564	127,159	13.3	134,416	14.1	420,467	44.0	609	117,426	192.8
UNCC	20,612	178,942	8.7	168,766	8.2	834,268	40.5	1,153	212,577	184.4
UNCG	16,497	132,142	8.0	100,703	6.1	663,824	0.2	923	164,245	178.0
ASU	15,749	150,335	9.6	105,901	6.7	740,973	47.1	955	157,413	164.8
FSU	5,367	74,381	13.9	45,777	8.5	168,188	31.3	338	51,169	151.4
NCCU	7,252	102,673	14.2	53,365	7.4	259,978	35.9	430	88,502	205.8
UNCP	5,415	69,168	12.8	23,126	4.3	278,127	51.4	382	58,853	154.1
UNCW	11,742	109,269	9.3	73,555	6.3	696,383	59.3	632	106,181	168.0
WCU	7,797	86,462	11.1	88,912	11.4	529,136	67.9	531	77,457	145.9
WSSU	6,054	72,404	12.0	54,247	9.0	300,308	49.6	368	50,394	136.9
ECSU	2,905	50,430	17.4	50,028	17.2	295,160	101.6	203	30,811	151.8
UNCA	3,215	44,806	13.9	34,878	10.9	173,848	54.1	260	46,740	179.8
UNCSA	870	28,337	32.6	78,500	90.2	146,650	168.6	146	27,263	186.7
UNC Total	193,221	2,043,280	10.6	1,668,327	8.6	9,606,742	49.7	14,139	2,279,883	161.3

Source: HEFC.GR005.G

TABLE 7B. CAPACITY/ENROLLMENT RATIO, 2004–2008

Institution	ASF of Instructional & Lib. Facilities	Total Student Clock Hours*	Capacity / Enrollment Ratio**				
			2004	2005	2006	2007	2008
Research Universities I							
NCSU	1,584,013	409,946.0	3.6	3.9	3.5	3.9	3.9
UNC-CH	1,582,377	282,984.5	5.6	5.6	5.7	5.6	5.6
Subtotal	3,166,390	692,930.5	4.4	4.6	4.4	4.6	4.6
Doctoral Universities I and II							
ECU	1,004,072	264,003.0	3.5	3.8	3.7	4.0	3.8
NCA&T	686,177	129,975.5	4.0	4.3	5.0	5.5	5.3
UNCC	902,123	283,729.5	2.8	3.1	3.2	3.1	3.2
UNCG	711,406	210,555.5	4.0	3.4	3.3	3.3	3.4
Subtotal	3,303,778	888,263.5	3.5	3.6	3.7	3.7	3.7
Master's (Comprehensive) Universities and Colleges I							
ASU	730,177	235,550.5	3.7	4.9	3.4	3.3	3.1
FSU	287,726	68,943.0	4.0	4.2	3.6	3.4	4.2
NCCU	488,726	99,732.0	4.2	4.8	5.0	4.7	4.9
UNCP	289,242	65,422.0	4.6	4.5	4.2	4.4	4.4
UNCW	499,539	169,174.0	2.8	2.7	2.7	2.8	3.0
WCU	501,086	101,774.0	5.4	5.1	4.6	4.3	4.9
WSSU	297,738	79,301.0	6.2	5.6	4.0	4.3	3.8
Subtotal	3,094,234	819,896.5	3.9	4.3	3.7	3.7	3.8
Baccalaureate (Liberal Arts) Universities and Colleges I and II							
ECSU	251,187	38,930.5	6.4	6.5	6.2	6.5	6.5
UNCA	273,778	53,735.5	4.8	5.0	4.9	4.9	5.1
Subtotal	524,965	92,666.0	5.7	5.6	4.8	5.6	5.7
Schools of Art, Music, and Design							
UNCSA	276,320	34,862.5	9.6	8.6	8.2	8.1	7.9

\* Student clock hours is a measurement of the total weekly hours of scheduled instruction for all of an institution's students. It is each course by multiplying the number of times the course meets each week by the number of hours of each course meeting, and product by the number of students.

\*\* The capacity/enrollment ratio is the amount of instructional and library space on a campus divided by the total fall term clock hours. A low ratio generally indicates a high level of utilization.

**TABLE 7C. PERCENT CLASSROOM OCCUPANCY BY HOUR AND BY INSTITUTION, 2008**

	8am	9am	10am	11am	12pm	1pm	2pm	3pm	4pm	5pm	6pm	7pm	8pm	9pm	Total
<b>Research Universities I</b>															
NCSU	39.4	64.0	83.6	82.3	71.1	78.2	71.8	55.5	52.3	33.4	28.4	24.5	15.5	4.9	50.3
UNC-CH	27.0	57.3	61.7	65.0	56.2	60.0	60.6	53.9	36.1	17.9	15.5	9.5	5.6	1.7	37.7
<b>Doctoral Universities I and II</b>															
ECU	35.0	71.0	77.2	75.0	63.8	61.0	60.1	58.1	38.7	21.6	24.6	18.6	16.4	11.8	45.2
NCA&T	39.0	58.1	58.5	55.2	47.0	45.9	50.9	42.8	33.3	21.7	29.0	24.0	14.1	2.1	37.3
UNCC	29.4	71.9	68.7	65.8	72.5	50.9	57.8	62.4	42.0	34.8	46.9	38.7	25.1	15.4	48.7
UNCG	33.7	85.2	86.7	87.8	75.5	75.5	73.4	68.5	55.2	32.4	54.3	40.1	29.7	10.3	57.8
<b>Master's</b>															
ASU	34.5	75.9	77.3	75.8	68.6	63.5	67.7	67.5	49.8	25.6	25.7	14.7	10.5	3.6	47.2
FSU	33.3	66.7	68.2	72.4	60.7	54.4	34.9	28.9	28.7	39.6	47.3	45.6	26.4	5.1	43.7
NCCU	17.4	51.9	51.8	48.4	45.2	40.8	44.1	34.5	29.2	27.8	36.8	33.7	26.4	7.5	35.4
UNCP	43.9	74.3	53.6	81.8	82.3	69.8	62.3	49.5	26.8	28.0	42.3	37.0	30.9	19.5	50.1
UNCW	42.2	77.6	80.8	80.0	75.7	69.7	62.5	66.2	52.4	40.0	45.7	26.8	14.1	7.8	53.0
WCU	40.9	71.3	74.4	77.6	76.5	71.1	70.0	63.3	42.4	21.8	25.8	19.6	12.5	1.6	47.8
WSSU	41.7	57.0	38.3	60.2	55.2	44.1	55.7	54.8	43.0	20.2	42.2	36.7	22.6	8.7	41.5
<b>Baccalaureate</b>															
ECSU	23.9	39.7	44.8	45.6	35.5	34.1	19.7	28.5	25.9	13.8	15.8	12.1	7.6	0.3	24.8
UNCA	28.7	79.3	86.3	86.0	82.7	73.3	75.3	67.3	60.7	35.0	39.7	36.3	27.0	2.3	55.7
<b>Schools of Art, Music, and Design</b>															
UNCSA	34.5	47.5	44.3	32.9	18.4	29.0	34.5	28.2	7.8	4.7	2.0	2.0	2.0	2.0	20.7
UNC Total	33.9	66.1	68.7	70.1	63.3	60.1	59.3	54.2	41.0	26.6	31.6	24.8	16.8	6.6	44.5

**TABLE 7D. PERCENT LABORATORY OCCUPANCY BY HOUR AND BY INSTITUTION, 2008**

	8am	9am	10am	11am	12pm	1pm	2pm	3pm	4pm	5pm	6pm	7pm	8pm	9pm	Total
<b>Research Universities I</b>															
NCSU	8.1	14.4	20.0	19.9	21.0	27.3	26.9	25.2	24.6	18.0	12.6	8.4	6.6	2.8	16.8
UNC-CH	6.7	14.9	17.1	16.0	18.1	30.7	34.2	34.2	26.2	8.8	11.4	10.1	6.7	4.5	17.1
<b>Doctoral Universities I and II</b>															
ECU	16.6	29.1	33.1	27.8	28.4	28.3	34.5	33.6	27.9	14.0	13.7	11.6	10.6	3.5	22.3
NCA&T	10.9	13.5	15.4	14.4	9.1	15.7	17.7	15.1	10.1	5.7	6.7	4.3	1.9	0.4	10.1
UNCC	12.9	29.9	27.9	29.7	31.4	21.3	38.2	38.9	31.1	21.5	21.4	19.1	12.2	7.6	24.5
UNCG	13.0	43.6	42.6	40.8	37.4	44.9	49.9	50.9	36.1	23.6	17.4	14.8	10.9	4.4	30.7
<b>Master's</b>															
ASU	20.2	41.3	47.7	46.4	35.8	41.1	47.4	47.9	41.5	29.2	20.2	11.7	6.2	2.5	31.4
FSU	15.4	34.0	33.3	30.2	27.7	34.0	16.8	14.4	12.3	11.6	15.4	14.4	7.4	2.5	19.2
NCCU	10.6	23.2	19.0	21.6	15.5	29.0	31.9	23.2	20.0	16.8	14.2	11.6	4.2	0.0	17.2
UNCP	18.1	36.3	34.4	38.8	41.3	43.1	43.1	37.5	26.9	12.5	15.0	13.8	11.3	1.9	26.7
UNCW	18.6	41.9	42.2	41.7	45.6	49.2	52.5	53.6	44.4	26.4	31.9	22.8	13.9	7.5	35.2
WCU	7.4	18.3	17.6	21.3	25.9	22.0	28.0	29.8	23.9	11.9	8.5	7.0	6.5	3.0	16.5
WSSU	12.9	21.6	17.1	26.1	23.2	20.6	27.7	25.8	24.2	13.9	18.1	15.8	10.6	3.9	18.7
<b>Baccalaureate</b>															
ECSU	15.9	25.9	32.2	26.3	17.4	18.1	13.3	22.2	21.9	16.7	11.5	5.2	1.1	0.0	16.3
UNCA	11.1	36.1	46.7	37.8	30.0	46.1	55.0	56.7	48.9	18.3	15.6	11.7	8.9	2.8	30.4
<b>Schools of Art, Music, and Design</b>															
UNCSA	10.5	12.4	29.5	40.0	34.9	15.6	25.1	36.5	34.3	32.1	16.5	21.3	21.3	21.3	25.1
UNC Total	12.1	24.1	26.8	26.7	25.4	28.2	32.1	31.9	26.8	17.0	14.7	11.6	8.1	4.0	20.7

Source: FAC.FAC001C

## VIII. ENDOWMENT MARKET VALUE AND GROWTH

All campuses are well aware of the necessity of raising private funds to supplement state appropriations and other sources of campus support. The following table summarizes the endowments for each campus and tracks changes between FY 2004 and FY 2009. Overall, there was strong and steady growth through 2008, but with the

economic downturn, endowments took almost a half-billion dollar hit in FY 2009. The good news is that the overall economic recovery will help restore what has been lost. But this change in endowment has come at a time when other sources of funds are constricting as well.

TABLE 8. ENDOWMENT MARKET VALUE AND PERCENT INCREASE, 2004-2009

<b>Endowment Market Value:</b>						
Institution	FY2004	FY2005	FY2006	FY2007	FY2008	FY2009
ASU	\$52,732,845	\$47,520,162	\$53,123,721	\$62,244,693	\$61,954,079	\$50,391,902
ECU	\$65,729,000	\$69,742,000	\$79,002,000	\$90,425,000	\$95,041,000	\$87,152,000
ECSU	\$2,267,262	\$3,821,838	\$5,208,731	\$5,099,233	\$3,878,418	\$3,253,643
FSU	DNA	\$6,361,761	\$6,890,924	\$11,349,962	\$12,496,516	\$12,111,665
NCA&T	DNA	\$14,571,670	\$16,038,262	\$18,247,734	\$19,873,654	\$20,732,170
NCCU	\$13,042,161	\$21,770,662	\$24,072,709	\$28,761,252	\$29,078,128	\$22,773,875
NCSU	\$324,189,000	\$380,541,000	\$412,298,000	\$535,003,000	\$544,551,000	\$463,866,000
UNCA	\$14,916,398	\$16,568,061	\$19,469,727	\$23,605,883	\$25,674,771	\$21,805,578
UNC-CH	\$1,232,118,534	\$1,432,550,726	\$1,687,838,091	\$2,178,924,581	\$2,335,824,025	\$1,903,720,728
UNCC	\$86,999,000	\$125,412,899	\$139,870,408	\$159,110,855	DNA	\$112,993,951
UNCG	\$124,220,645	\$137,885,061	\$155,642,459	\$183,751,626	\$180,481,694	\$152,256,230
UNCP	\$4,811,598	\$6,012,336	\$8,173,670	\$10,102,662	\$10,595,073	\$11,752,229
UNCW	\$23,030,000	\$33,544,173	\$40,010,993	\$50,794,000	\$55,083,000	\$48,931,253
UNCSA	\$18,038,000	\$21,714,091	\$25,721,864	\$27,685,164	\$25,701,551	\$20,317,009
WCU	\$23,280,050	\$23,217,783	\$30,515,686	\$36,305,782	\$38,673,464	\$33,857,597
WSSU	\$15,482,487	\$16,830,869	\$18,264,528	\$21,759,269	\$24,763,373	\$19,874,537
UNC Total	\$2,000,856,980	\$2,358,065,092	\$2,722,141,773	\$3,443,170,696	\$3,463,669,746	\$2,985,790,367
<b>Percent Increase from Previous Year:</b>						
Institution	FY2004	FY2005	FY2006	FY2007	FY2008	FY2009
ASU	base year	-9.9%	11.8%	17.2%	-0.5%	-18.7%
ECU	base year	6.1%	13.3%	14.5%	5.1%	-8.3%
ECSU	base year	68.6%	36.3%	-2.1%	-23.9%	-16.1%
FSU	base year	n/a	n/a	64.7%	10.1%	-3.1%
NCA&T	base year	n/a	n/a	13.8%	8.9%	4.3%
NCCU	base year	66.9%	10.6%	19.5%	1.1%	-21.7%
NCSU	base year	17.4%	8.3%	29.8%	1.8%	-14.8%
UNCA	base year	11.1%	17.5%	21.2%	8.8%	-15.1%
UNC-CH	base year	16.3%	17.8%	29.1%	7.2%	-18.5%
UNCC	base year	44.2%	11.5%	13.8%	n/a	n/a
UNCG	base year	11.0%	12.9%	18.1%	-1.8%	-15.6%
UNCP	base year	25.0%	35.9%	23.6%	4.9%	10.9%
UNCW	base year	45.7%	19.3%	27.0%	8.4%	-11.2%
UNCSA	base year	20.4%	18.5%	7.6%	-7.2%	-21.0%
WCU	base year	-0.3%	31.4%	19.0%	6.5%	-12.5%
WSSU	base year	8.7%	8.5%	19.1%	13.8%	-19.7%
UNC Total	base year	17.9%	15.4%	26.5%	0.6%	-13.8%

Source: Voluntary Support of Education (VSE)

Note: "DNA" stands for data not available, "n/a" for not applicable.